

## MCMaster - PLAN M4161C3F-2R

Total Area: 4989 sq. ft.  
Garage Area: 805 sq. ft.  
Garage Area: 805 sq. ft.  
Garage Size: 3  
Stories: 2  
Bedrooms: 5  
Full Baths: 4  
Half Baths: 1  
Width: 67'-0"  
Depth: 70'-0"  
Height: 32'-10"  
Foundation: Crawl Space



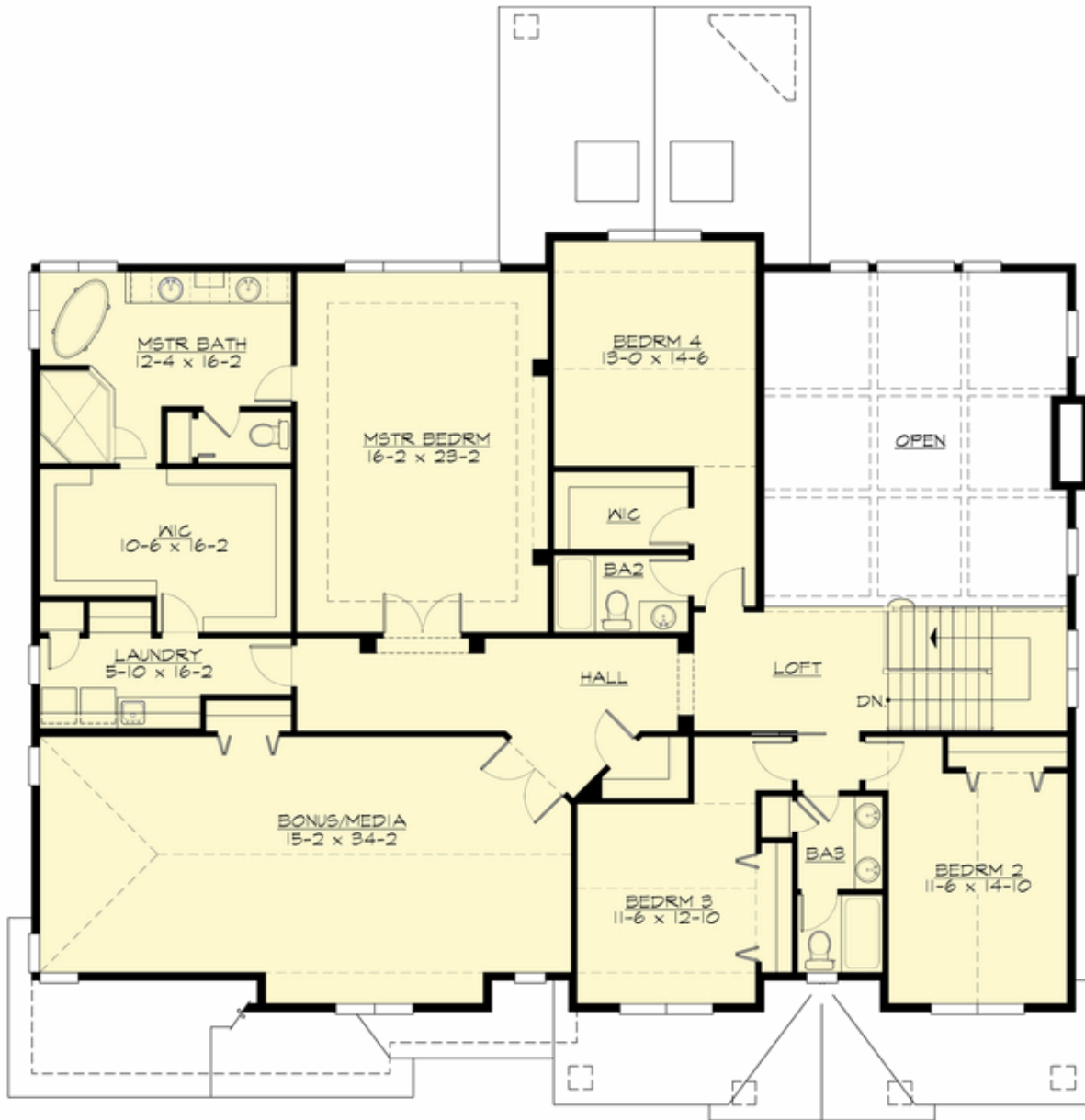
## MCMASTER - PLAN M4161C3F-2R

### MAIN FLOOR



## MCMaster - PLAN M4161C3F-2R

### UPPER FLOOR



## **MCMaster - PLAN M4161C3F-2R**

### **PLAN DETAILS**

#### **Area Summary**

Total Area: 4989 sq. ft.  
Main Floor: 2433 sq. ft.  
Upper Floor: 2556 sq. ft.  
Garage Floor: 805 sq. ft.

#### **General Information**

Stories: 2  
Width: 67'-0"  
Depth: 70'-0"  
Height: 32'-10"

#### **Architectural Style**

Craftsman  
Shingle  
Traditional

#### **Number of Rooms**

Bedrooms: 5  
Full Baths: 4  
Half Baths: 1

#### **Garage**

Garage Size: 3  
Garage Door Location: Front

#### **Roof Pitches**

Primary: 8:12  
Secondary: 6:12

#### **Wall Heights**

Main: 10'-0"  
Upper: 9'-0"

#### **Foundation Type**

Crawl Space

#### **Roof Framing**

Trusses

#### **Floor Load**

Live (lbs): 40 PSF  
Dead (lbs): 10 PSF

#### **Roof Load**

Live (lbs): 25 PSF  
Dead (lbs): 15 PSF  
Wind: 85 MPH

#### **Design Features**

- Bonus Space @ Upper Floor
- Den/Office
- Front and Rear Porch
- Great Room
- Laundry Room @ Upper Floor
- Master Bedroom @ Upper Floor Rear
- View Lot - Rear
- Wide Lot