

## SENECA - PLAN M3485A3S-0

Total Area: 3485 sq. ft.  
Garage Area: 1132 sq. ft.  
Garage Area: 1132 sq. ft.  
Garage Size: 3  
Stories: 2  
Bedrooms: 4  
Full Baths: 4  
Width: 80'-0"  
Depth: 86'-0"  
Height: 26'-0"  
Foundation: Crawl Space



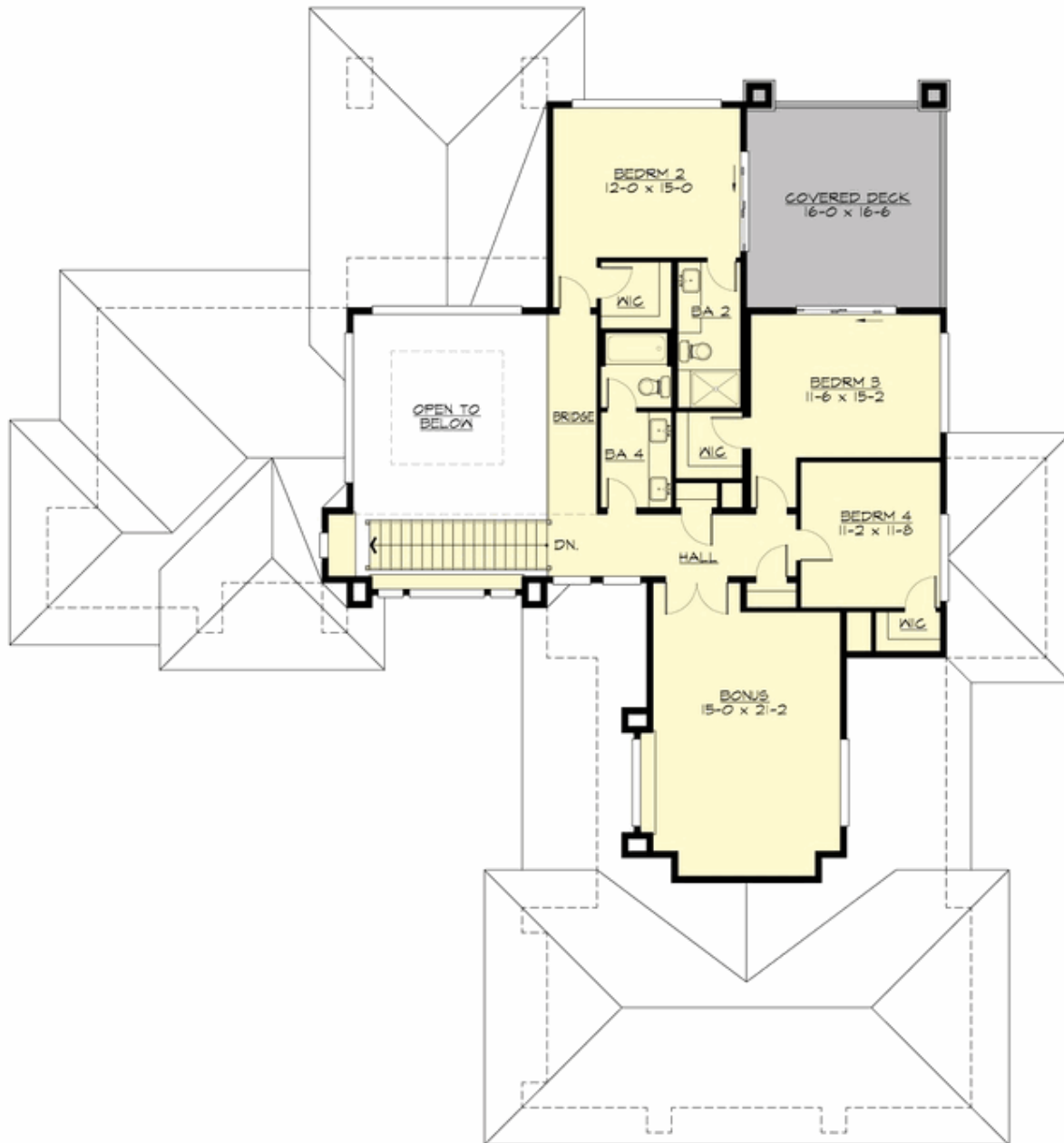
## SENECA - PLAN M3485A3S-0

### MAIN FLOOR



## SENECA - PLAN M3485A3S-0

### UPPER FLOOR





## SENECA - PLAN M3485A3S-0

### PLAN DETAILS

#### Area Summary

Total Area: 3485 sq. ft.  
Main Floor: 2103 sq. ft.  
Upper Floor: 1382 sq. ft.  
Garage Floor: 1132 sq. ft.

#### General Information

Stories: 2  
Width: 80'-0"  
Depth: 86'-0"  
Height: 26'-0"

#### Architectural Style

Contemporary  
Modern  
Prairie

#### Number of Rooms

Bedrooms: 4  
Full Baths: 4

#### Garage

Garage Size: 3  
Garage Door Location: Side

#### Roof Pitches

Primary: 4:12  
Secondary: 3:12

#### Wall Heights

Main: 9'-0"  
Upper: 9'-0"

#### Foundation Type

Crawl Space

#### Roof Framing

Trusses

#### Floor Load

Live (lbs): 40 PSF  
Dead (lbs): 10 PSF

#### Roof Load

Live (lbs): 35 PSF  
Dead (lbs): 15 PSF  
Wind: 85 MPH

#### Design Features

- Bonus Space @ Upper Floor
- Den/Office
- Great Room
- Laundry Room @ Main Floor
- Master Bedroom @ Main Floor Rear
- Rear Porch
- View Lot - Rear