

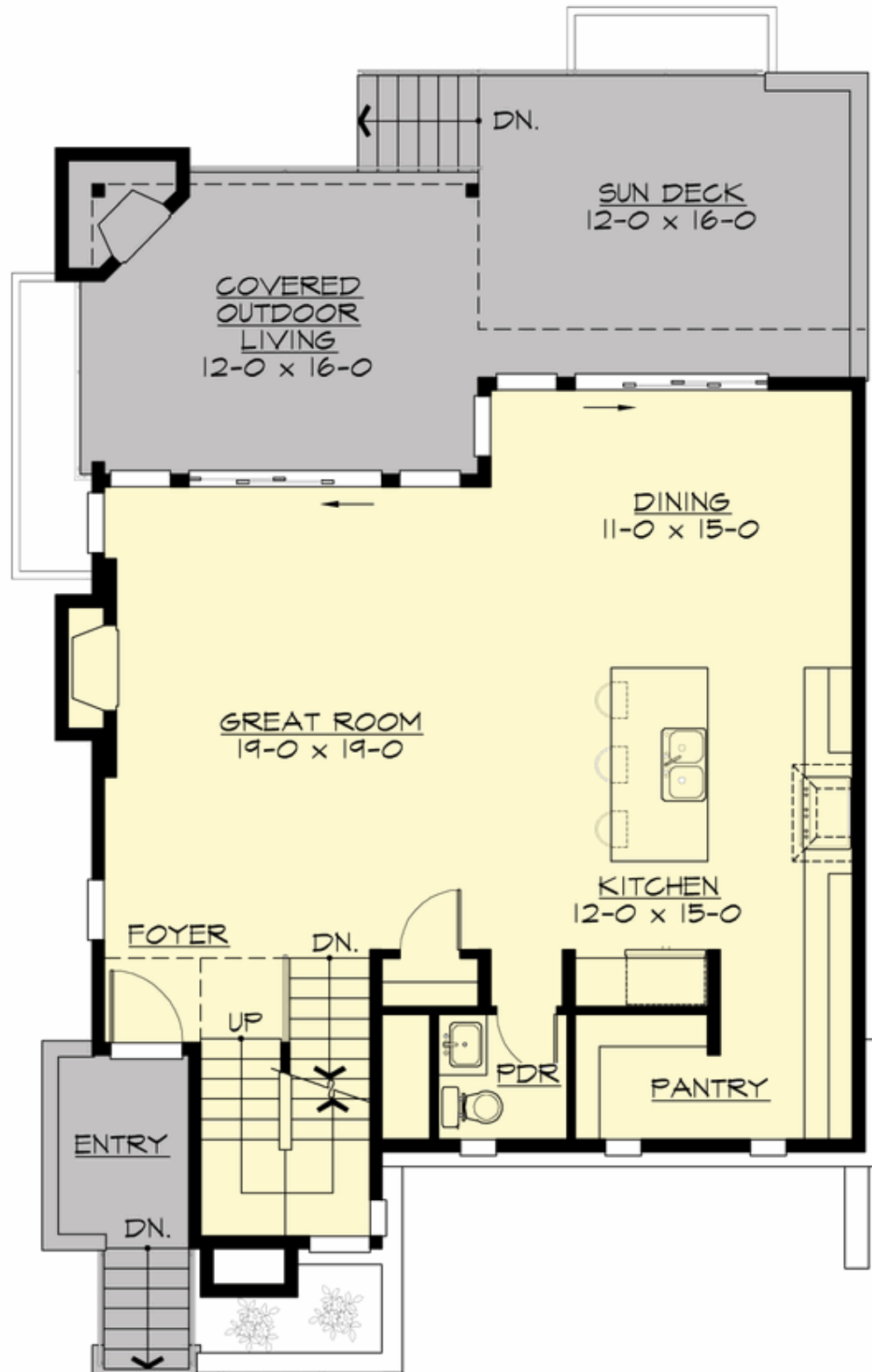
## BETTY - PLAN M2865B2FU-0DB

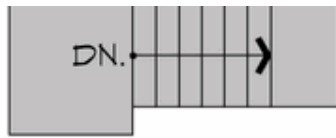
Total Area: 2861 sq. ft.  
Garage Area: 456 sq. ft.  
Garage Area: 456 sq. ft.  
Garage Size: 2  
Stories: 3  
Bedrooms: 4  
Full Baths: 3  
Half Baths: 1  
Width: 32'-0"  
Depth: 50'-0"  
Height: 24'-6"  
Foundation: Daylight Basement



## BETTY - PLAN M2865B2FU-0DB

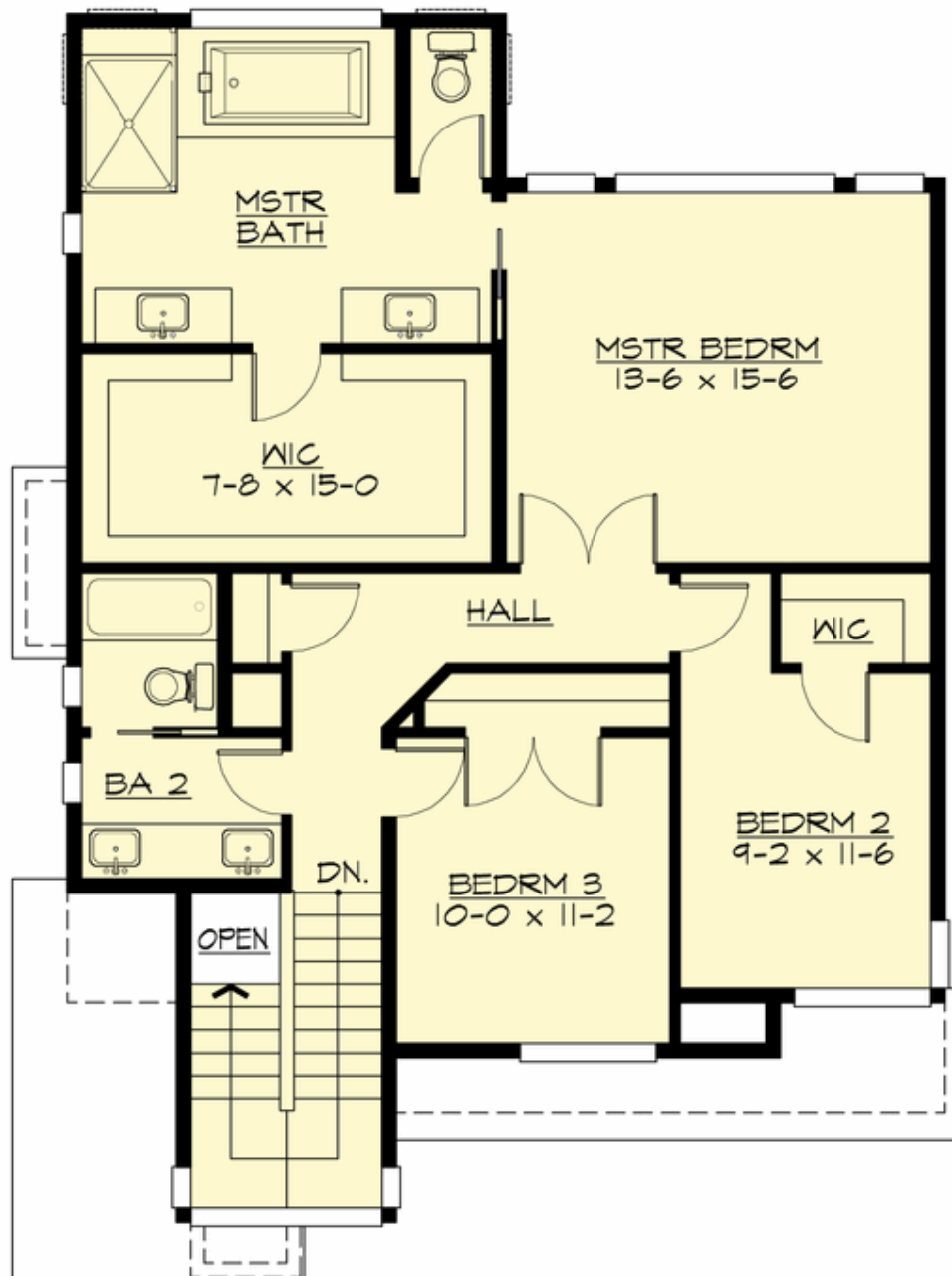
### MAIN FLOOR





**BETTY - PLAN M2865B2FU-0DB**

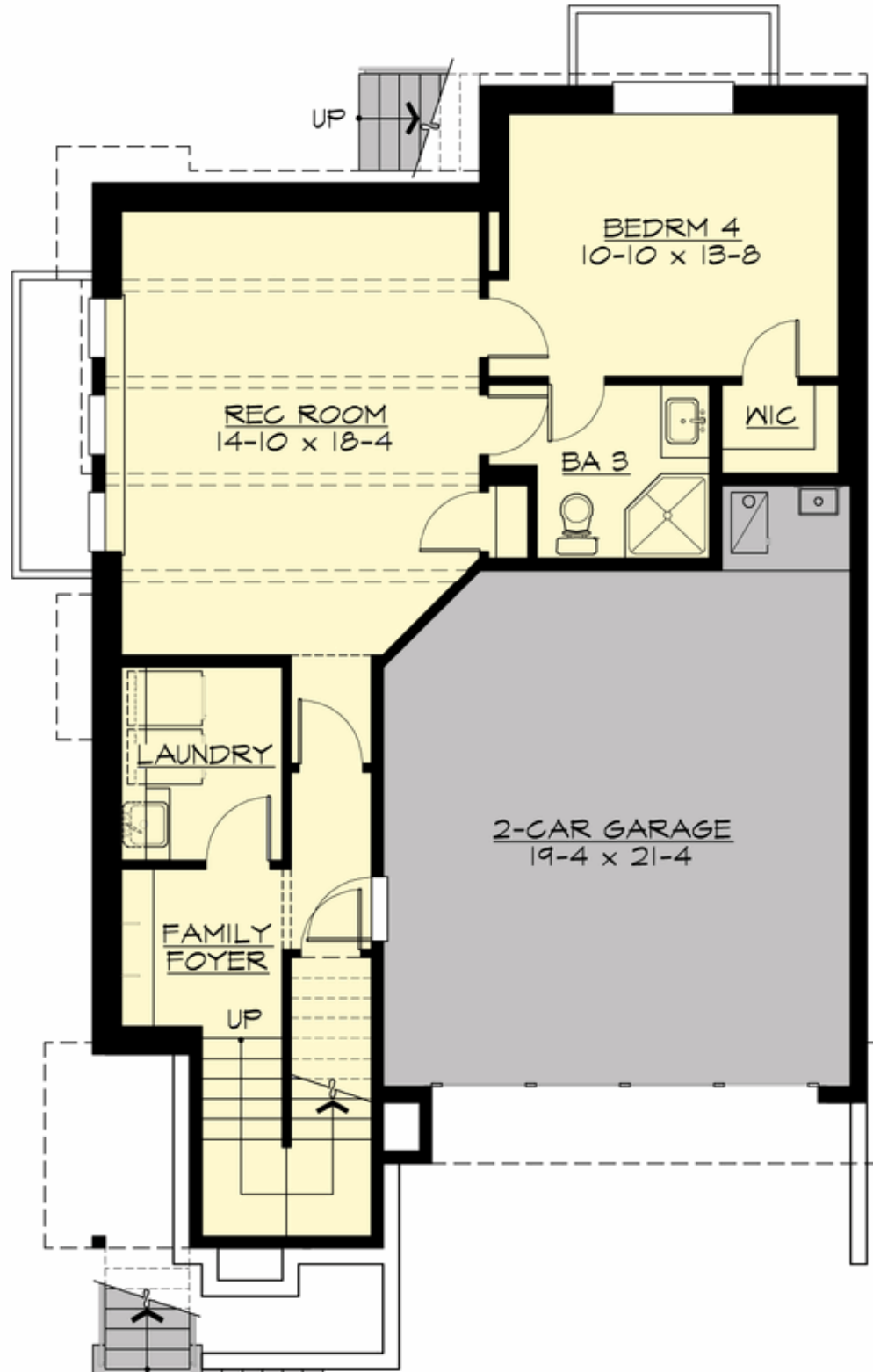
**UPPER FLOOR**

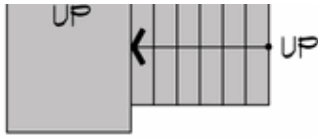




**BETTY - PLAN M2865B2FU-0DB**

**LOWER FLOOR**





## BETTY - PLAN M2865B2FU-0DB

### PLAN DETAILS

#### Area Summary

Total Area:	2861 sq. ft.
Main Floor:	967 sq. ft.
Upper Floor:	1031 sq. ft.
Lower Floor:	863 sq. ft.
Garage Floor:	456 sq. ft.

#### General Information

Stories:	3
Width:	32'-0"
Depth:	50'-0"
Height:	24'-6"

#### Architectural Style

Contemporary  
Modern  
Prairie

#### Number of Rooms

Bedrooms:	4
Full Baths:	3
Half Baths:	1

#### Garage

Garage Size:	2
Garage Door Location:	Front
Garage Type:	Under

#### Roof Pitches

Primary:	4:12
----------	------

#### Wall Heights

Main:	9'-0"
Upper:	8'-0"
3rd Floor:	0'-0"
Lower:	9'-0"

#### Foundation Type

Daylight Basement

#### Roof Framing

Trusses

#### Floor Load

Live (lbs):	40 PSF
Dead (lbs):	10 PSF

#### Roof Load

Live (lbs):	25 PSF
Dead (lbs):	15 PSF
Wind:	85 MPH

#### Design Features

- Bonus Space @ Lower Floor
- Great Room
- Laundry Room @ Lower Floor
- Master Bedroom @ Upper Floor Rear
- Narrow Lot
- Rear Porch
- View Lot - Rear