

## COVELLA - PLAN M4535A3S-0

Total Area: 4544 sq. ft.  
Garage Area: 900 sq. ft.  
Garage Area: 900 sq. ft.  
Garage Size: 3  
Stories: 2  
Bedrooms: 5  
Full Baths: 4  
Half Baths: 1  
Width: 60'-0"  
Depth: 88'-0"  
Height: 22'-9"  
Foundation: Crawl Space



**COVELLA - PLAN M4535A3S-0**

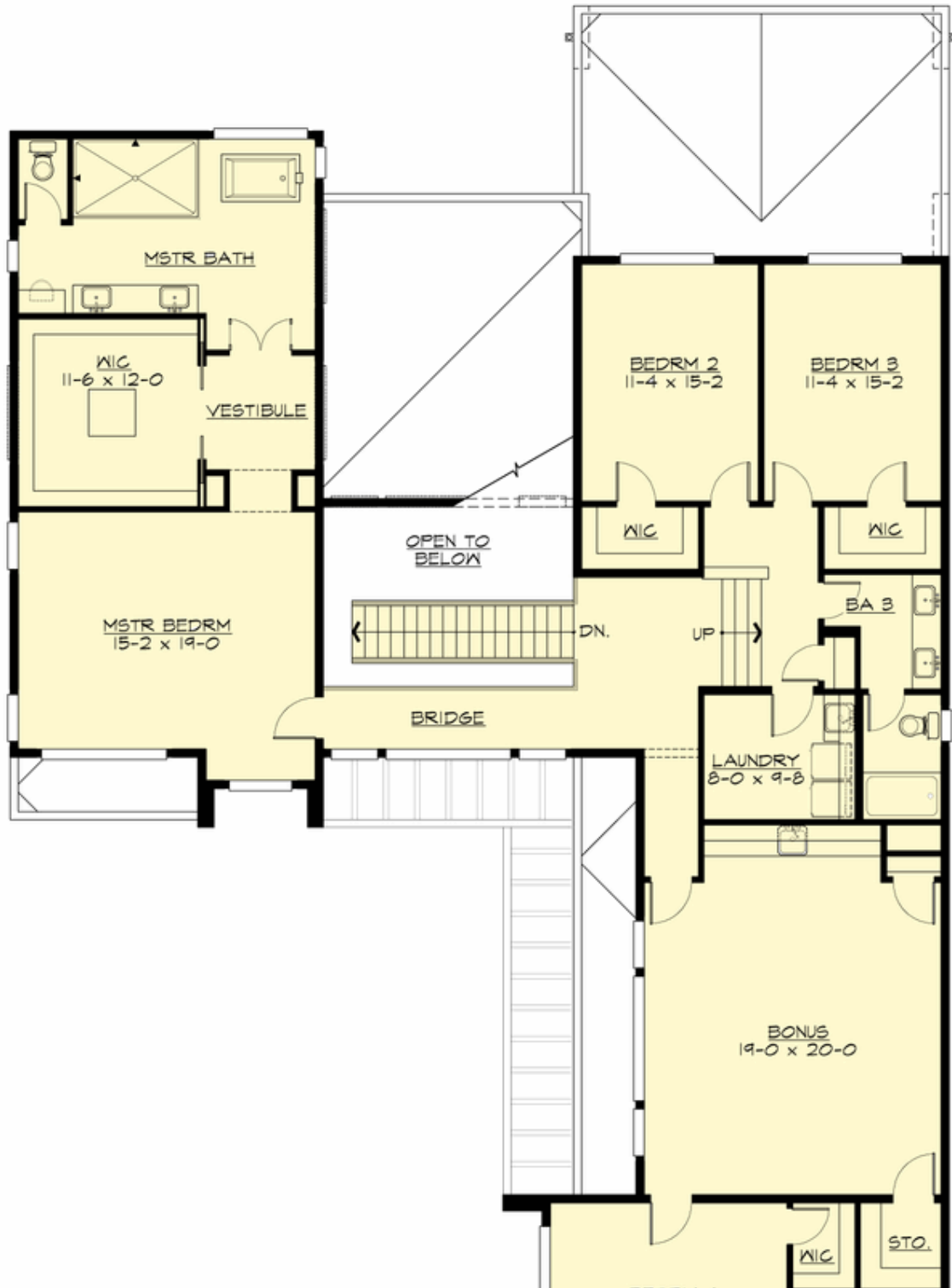
**MAIN FLOOR**

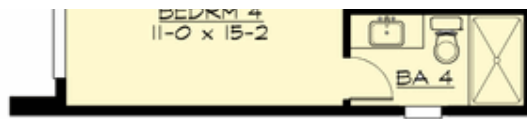




**COVELLA - PLAN M4535A3S-0**

**UPPER FLOOR**







## COVELLA - PLAN M4535A3S-0

### PLAN DETAILS

#### Area Summary

Total Area:	4544 sq. ft.
Main Floor:	2026 sq. ft.
Upper Floor:	2518 sq. ft.
Garage Floor:	900 sq. ft.

#### General Information

Stories:	2
Width:	60'-0"
Depth:	88'-0"
Height:	22'-9"

#### Architectural Style

Contemporary  
Modern  
Northwest

#### Number of Rooms

Bedrooms:	5
Full Baths:	4
Half Baths:	1

#### Garage

Garage Size:	3
Garage Door Location:	Side

#### Roof Pitches

Primary:	0:12
----------	------

#### Wall Heights

Main:	11'-0"
Upper:	10'-0"

#### Foundation Type

Crawl Space

#### Roof Framing

Trusses

#### Floor Load

Live (lbs):	40 PSF
Dead (lbs):	10 PSF

#### Roof Load

Live (lbs):	25 PSF
Dead (lbs):	15 PSF
Wind:	85 MPH

#### Design Features

- Bonus Space @ Upper Floor
- Den/Office
- Great Room
- Laundry Room @ Upper Floor
- Luxury Plan
- Master Bedroom @ Upper Floor  
Front
- New Plan
- Rear Porch
- View Lot - Rear