

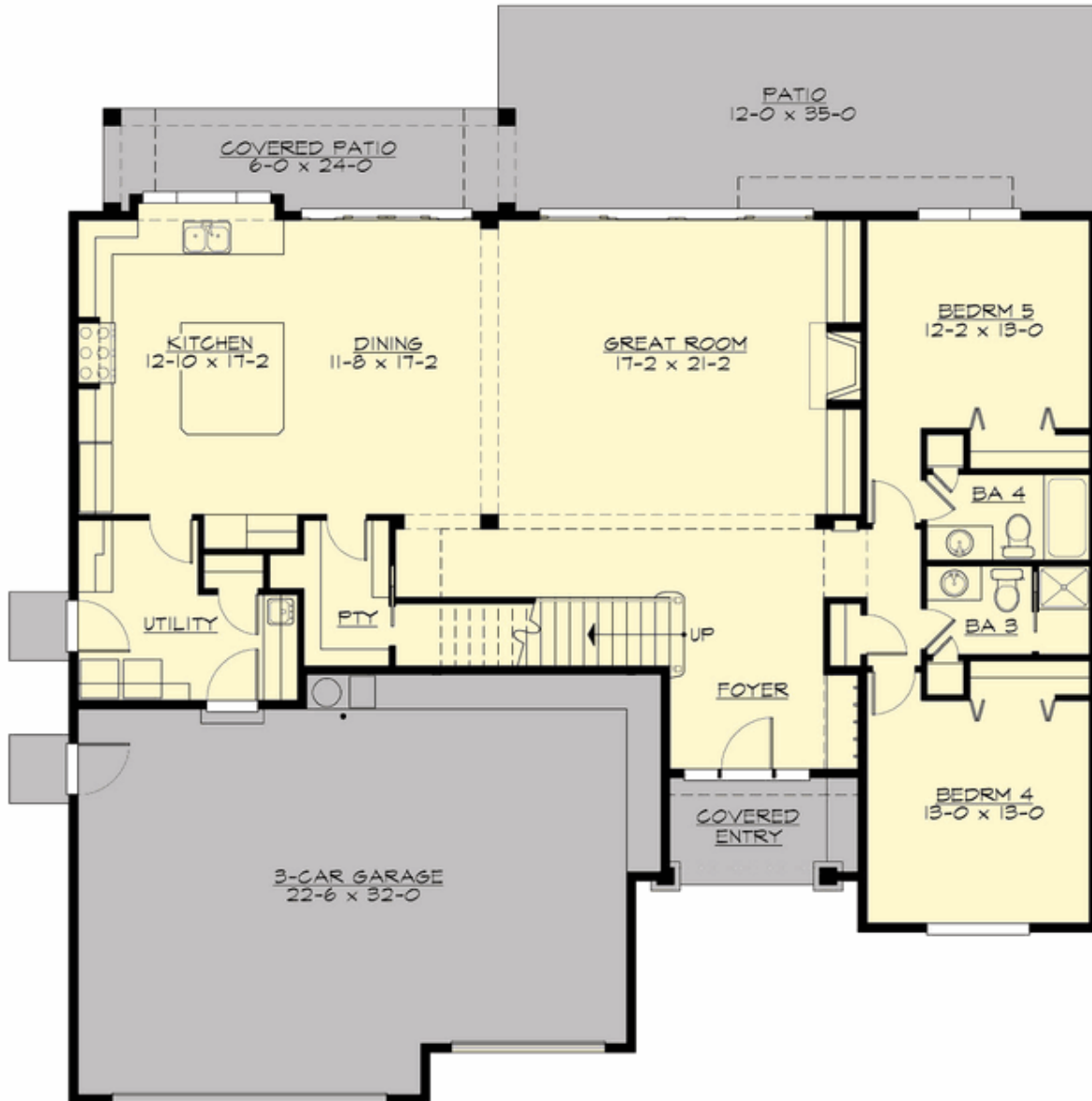
## AUSTIN - PLAN M3289A3F-0

Total Area: 3498 sq. ft.  
Garage Area: 782 sq. ft.  
Garage Area: 782 sq. ft.  
Garage Size: 3  
Stories: 2  
Bedrooms: 5  
Full Baths: 4  
Width: 60'-0"  
Depth: 58'-0"  
Height: 32'-0"  
Foundation: Crawl Space



**AUSTIN - PLAN M3289A3F-0**

**MAIN FLOOR**



**AUSTIN - PLAN M3289A3F-0**

**UPPER FLOOR**



## AUSTIN - PLAN M3289A3F-0

### PLAN DETAILS

#### Area Summary

Total Area: 3498 sq. ft.  
Main Floor: 1926 sq. ft.  
Upper Floor: 1572 sq. ft.  
Garage Floor: 782 sq. ft.

#### General Information

Stories: 2  
Width: 60'-0"  
Depth: 58'-0"  
Height: 32'-0"

#### Architectural Style

Farmhouse  
Northwest  
Shingle

#### Number of Rooms

Bedrooms: 5  
Full Baths: 4

#### Garage

Garage Size: 3  
Garage Door Location: Front

#### Roof Pitches

Primary: 9:12  
Secondary: 5:12

#### Wall Heights

Main: 10'-0"  
Upper: 9'-0"

#### Foundation Type

Crawl Space

#### Roof Framing

Trusses

#### Floor Load

Live (lbs): 40 PSF  
Dead (lbs): 10 PSF

#### Roof Load

Live (lbs): 25 PSF  
Dead (lbs): 15 PSF  
Wind: 85 MPH

#### Design Features

- Front and Rear Porch
- Great Room
- Laundry Room @ Main & Upper Floor
- Master Bedroom @ Upper Floor Rear
- View Lot - Rear
- Wide Lot