

## ELDORA WAY - PLAN M3325A2F-8

Total Area: 3557 sq. ft.  
Garage Area: 533 sq. ft.  
Garage Area: 533 sq. ft.  
Garage Size: 2  
Stories: 2  
Bedrooms: 4  
Full Baths: 3  
Half Baths: 1  
Width: 63'-0"  
Depth: 64'-6"  
Height: 24'-6"  
Foundation: Crawl Space



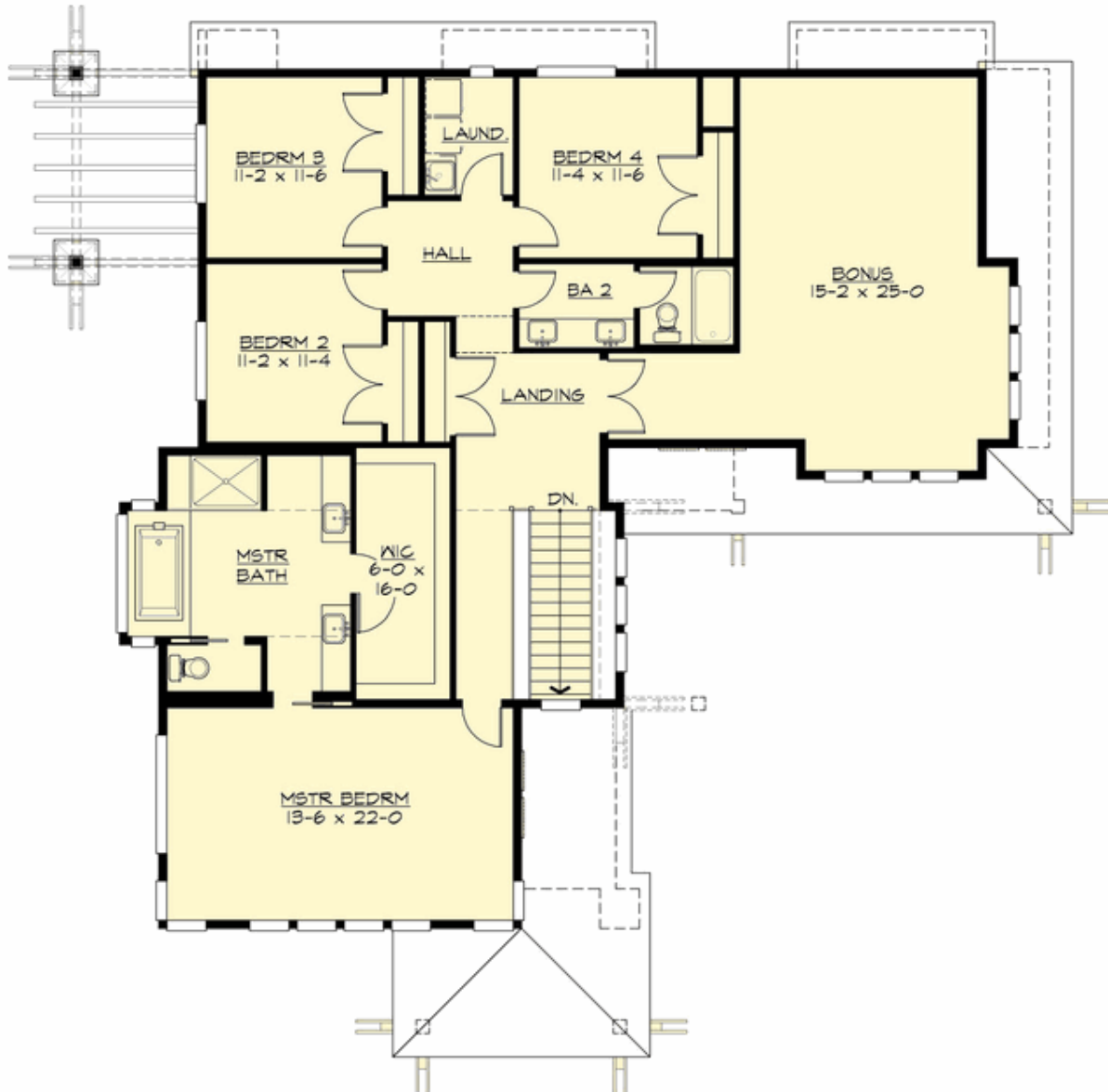
## ELDORA WAY - PLAN M3325A2F-8

### MAIN FLOOR



## ELDORA WAY - PLAN M3325A2F-8

### UPPER FLOOR



## ELDORA WAY - PLAN M3325A2F-8

### PLAN DETAILS

#### Area Summary

Total Area: 3557 sq. ft.  
Main Floor: 1569 sq. ft.  
Upper Floor: 1988 sq. ft.  
Garage Floor: 533 sq. ft.

#### General Information

Stories: 2  
Width: 63'-0"  
Depth: 64'-6"  
Height: 24'-6"

#### Architectural Style

Contemporary  
Northwest  
Prairie

#### Number of Rooms

Bedrooms: 4  
Full Baths: 3  
Half Baths: 1

#### Garage

Garage Size: 2  
Garage Door Location: Front

#### Roof Pitches

Primary: 3:12

#### Wall Heights

Main: 9'-0"  
Upper: 8'-0"

#### Foundation Type

Crawl Space

#### Roof Framing

Trusses

#### Floor Load

Live (lbs): 40 PSF  
Dead (lbs): 10 PSF

#### Roof Load

Live (lbs): 25 PSF  
Dead (lbs): 15 PSF  
Wind: 85 MPH

#### Design Features

- Bonus Space @ Upper Floor
- Den/Office
- Front and Rear Porch
- Great Room
- Laundry Room @ Upper Floor
- Master Bedroom @ Upper Floor Front
- View Lot - Rear