

## PAULO - PLAN M3405A2F-0

Total Area: 3405 sq. ft.  
Garage Area: 425 sq. ft.  
Garage Area: 425 sq. ft.  
Garage Size: 2  
Stories: 2  
Bedrooms: 4  
Full Baths: 4  
Width: 56'-0"  
Depth: 61'-6"  
Height: 24'-0"  
Foundation: Crawl Space



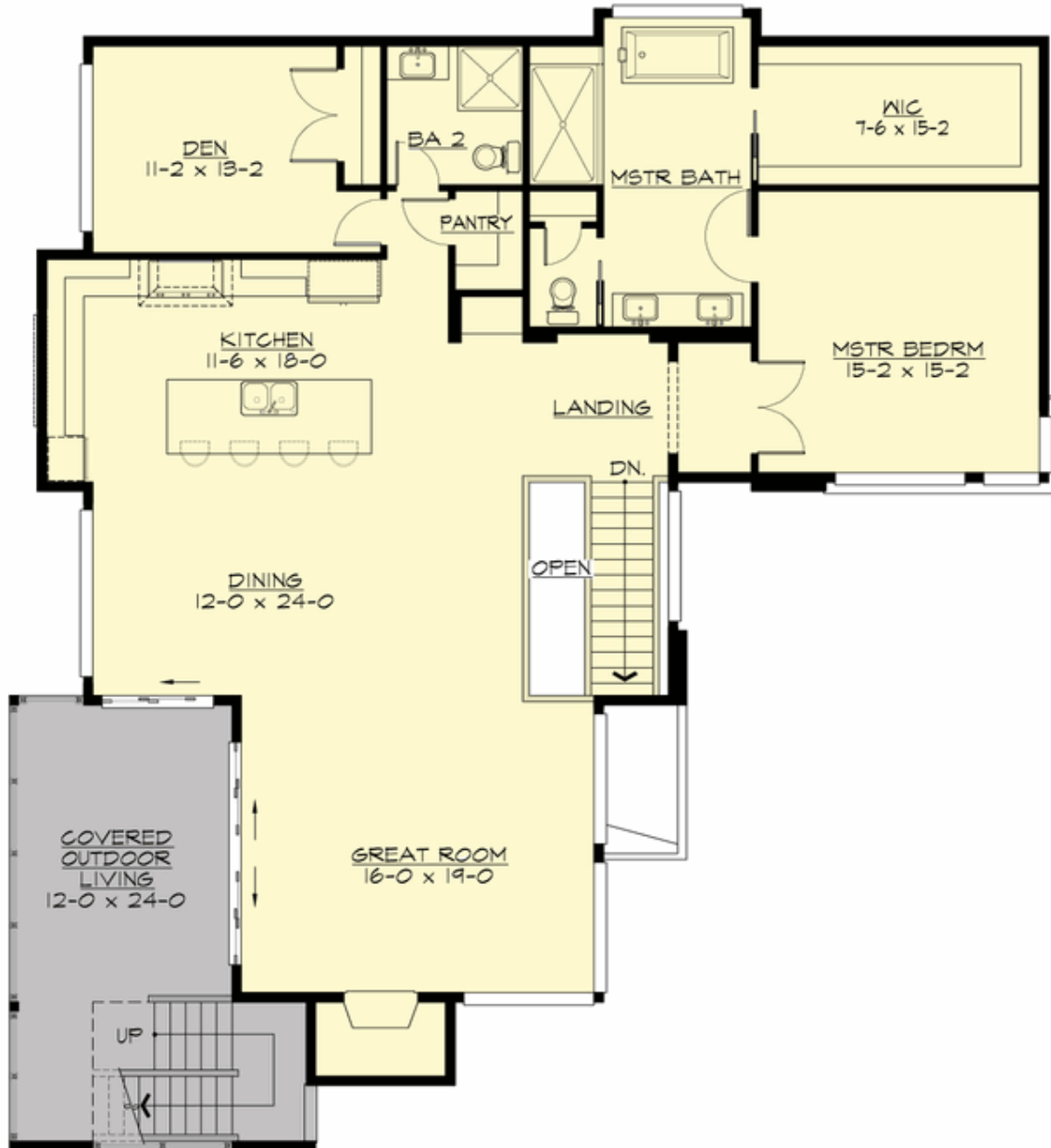
**PAULO - PLAN M3405A2F-0**

**MAIN FLOOR**



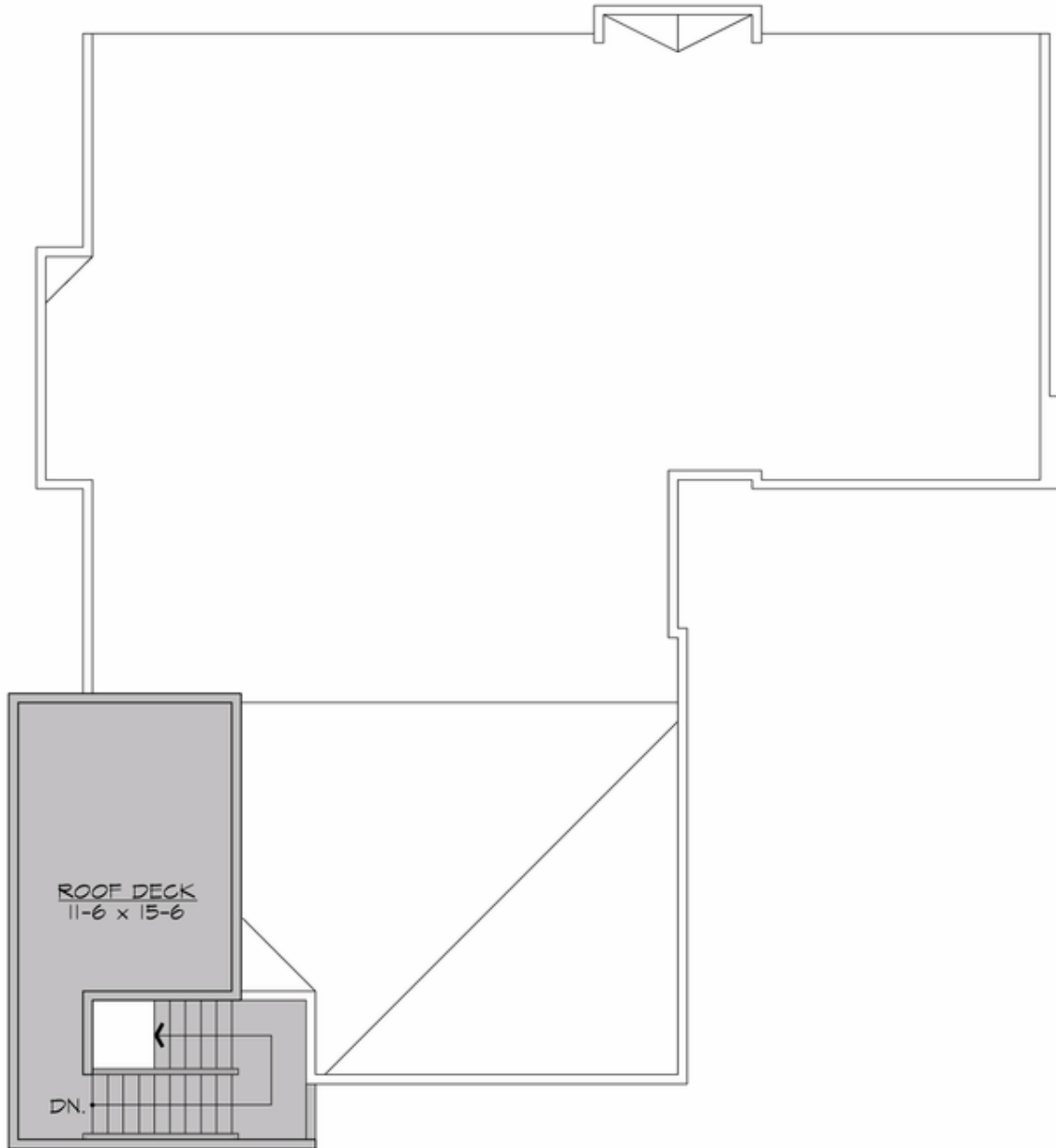
**PAULO - PLAN M3405A2F-0**

**UPPER FLOOR**



**PAULO - PLAN M3405A2F-0**

**THIRD FLOOR**



## PAULO - PLAN M3405A2F-0

### PLAN DETAILS

#### Area Summary

Total Area: 3405 sq. ft.  
Main Floor: 1906 sq. ft.  
Lower Floor: 1499 sq. ft.  
Garage Floor: 425 sq. ft.

#### General Information

Stories: 2  
Width: 56'-0"  
Depth: 61'-6"  
Height: 24'-0"

#### Architectural Style

Contemporary  
Modern  
Northwest

#### Number of Rooms

Bedrooms: 4  
Full Baths: 4

#### Garage

Garage Size: 2  
Garage Door Location: Front

#### Roof Pitches

Primary: 1:12

#### Wall Heights

Main: 11'-0"  
Lower: 9'-0"

#### Foundation Type

Crawl Space

#### Roof Framing

Trusses

#### Floor Load

Live (lbs): 40 PSF  
Dead (lbs): 10 PSF

#### Roof Load

Live (lbs): 25 PSF  
Dead (lbs): 15 PSF  
Wind: 85 MPH

#### Design Features

- Bonus Space @ Lower Floor
- Den/Office
- Great Room
- Laundry Room @ Lower Floor
- Master Bedroom @ Main Floor Front
- Rear Porch
- View Lot - Front
- Wide Lot