

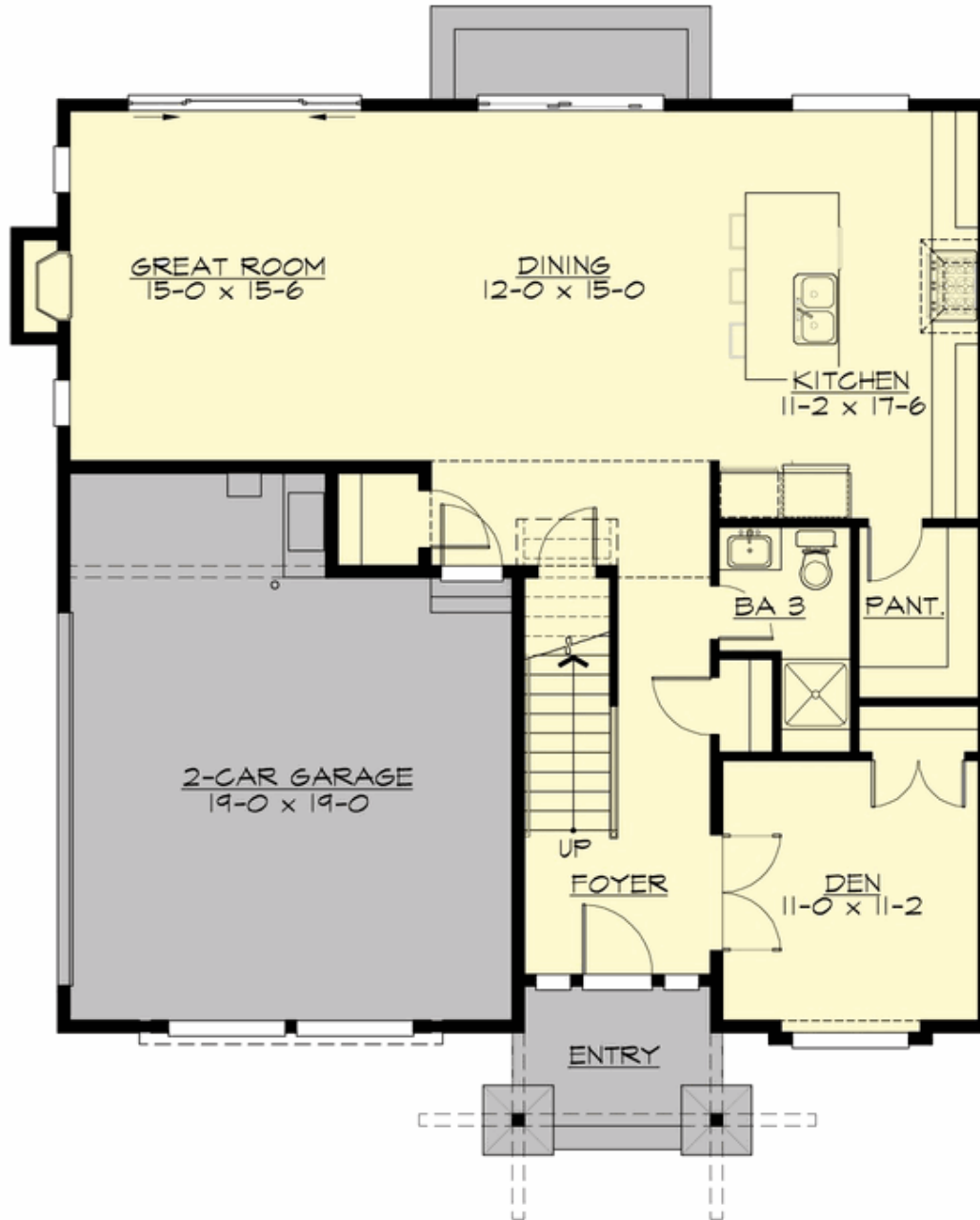
CALI CREEK - PLAN M2685A2S-2

Total Area: 2711 sq. ft.
Garage Area: 433 sq. ft.
Garage Area: 433 sq. ft.
Garage Size: 2
Stories: 2
Bedrooms: 4
Full Baths: 3
Width: 40'-0"
Depth: 44'-0"
Height: 26'-0"
Foundation: Crawl Space



CALI CREEK - PLAN M2685A2S-2

MAIN FLOOR



CALI CREEK - PLAN M2685A2S-2

UPPER FLOOR





CALI CREEK - PLAN M2685A2S-2

PLAN DETAILS

Area Summary

Total Area: 2711 sq. ft.
Main Floor: 1165 sq. ft.
Upper Floor: 1546 sq. ft.
Garage Floor: 433 sq. ft.

General Information

Stories: 2
Width: 40'-0"
Depth: 44'-0"
Height: 26'-0"

Architectural Style

Contemporary
Modern
Prairie

Number of Rooms

Bedrooms: 4
Full Baths: 3

Garage

Garage Size: 2
Garage Door Location: Side

Roof Pitches

Primary: 4:12

Wall Heights

Main: 9'-0"
Upper: 8'-0"

Foundation Type

Crawl Space

Roof Framing

Trusses

Floor Load

Live (lbs): 40 PSF
Dead (lbs): 10 PSF

Roof Load

Live (lbs): 25 PSF
Dead (lbs): 15 PSF
Wind: 85 MPH

Design Features

- Bonus Space @ Upper Floor
- Den/Office
- Front Porch
- Great Room
- Laundry Room @ Upper Floor
- Master Bedroom @ Upper Floor Rear
- Narrow Lot
- View Lot - Rear