

## MONTEVISTA - PLAN M5191B3FTU-1DB

Total Area: 5099 sq. ft.  
Garage Area: 795 sq. ft.  
Garage Area: 795 sq. ft.  
Garage Size: 3  
Stories: 3  
Bedrooms: 5  
Full Baths: 5  
Half Baths: 1  
Width: 46'-0"  
Depth: 72'-6"  
Height: 26'-11"  
Foundation: Daylight Basement



**MONTEVISTA - PLAN M5191B3FTU-1DB**

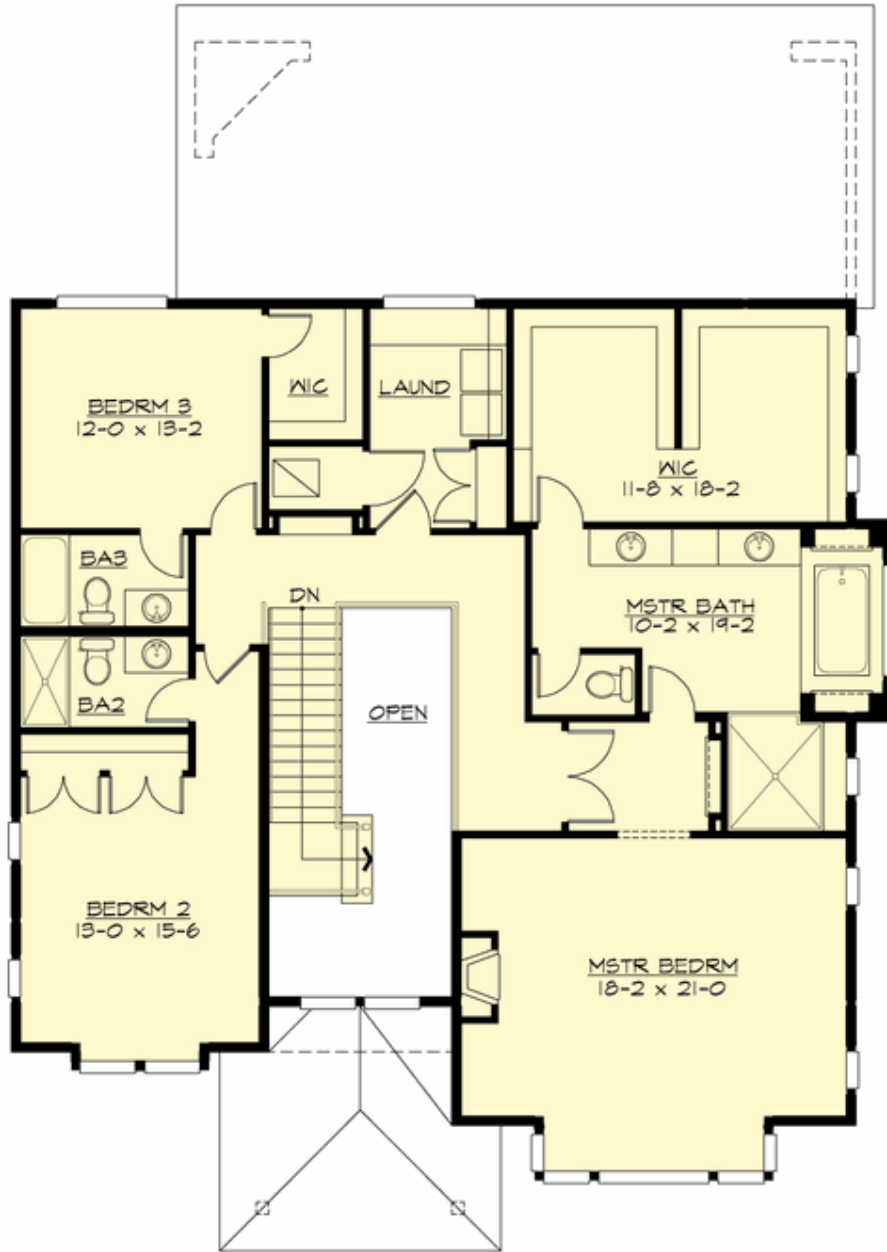
**MAIN FLOOR**





**MONTEVISTA - PLAN M5191B3FTU-1DB**

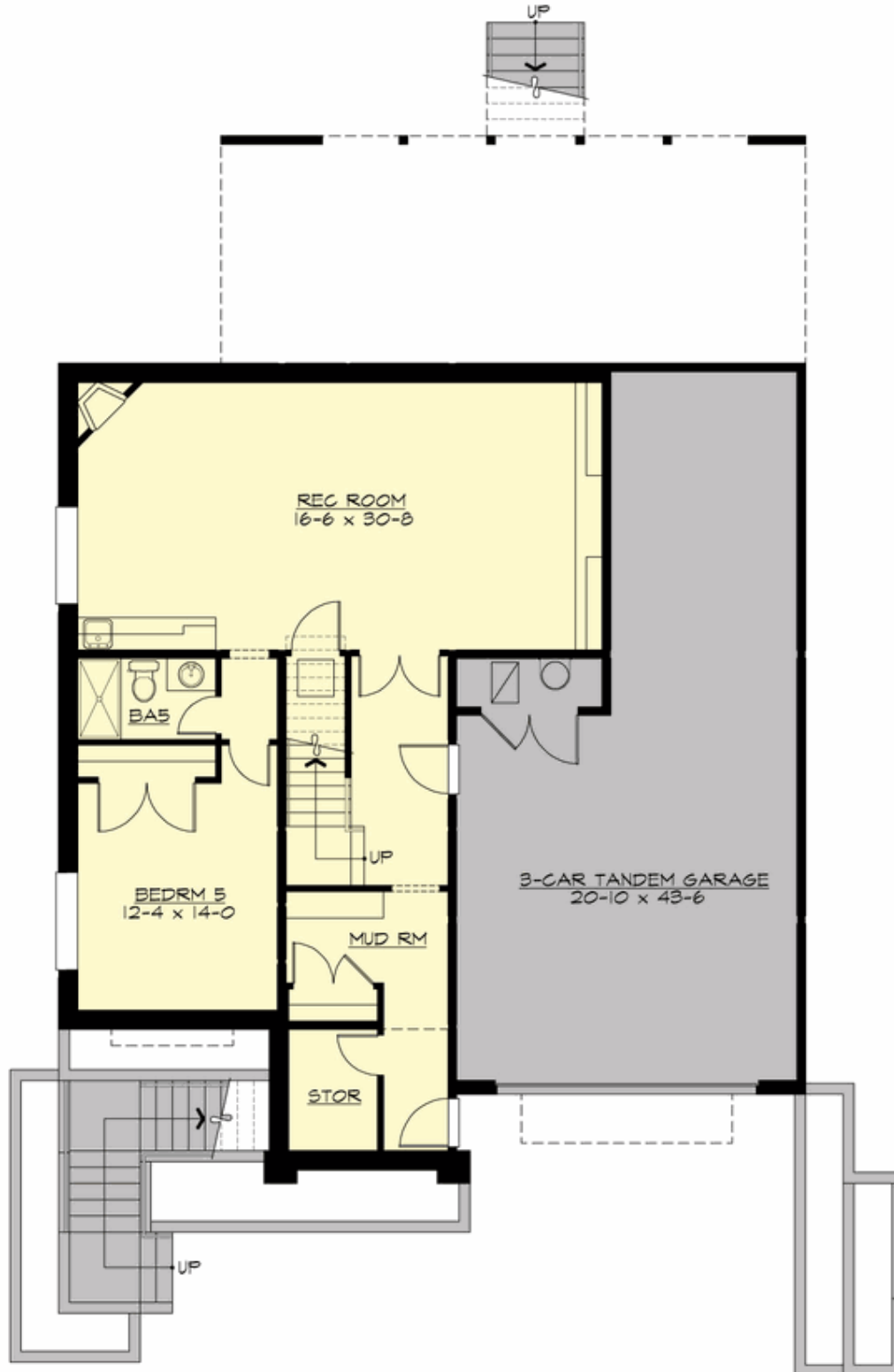
**UPPER FLOOR**





**MONTEVISTA - PLAN M5191B3FTU-1DB**

**LOWER FLOOR**







## MONTEVISTA - PLAN M5191B3FTU-1DB

### PLAN DETAILS

#### Area Summary

Total Area:	5099 sq. ft.
Main Floor:	2021 sq. ft.
Upper Floor:	1801 sq. ft.
Lower Floor:	1277 sq. ft.
Garage Floor:	795 sq. ft.

#### General Information

Stories:	3
Width:	46'-0"
Depth:	72'-6"
Height:	26'-11"

#### Architectural Style

Contemporary  
Northwest  
Prairie

#### Number of Rooms

Bedrooms:	5
Full Baths:	5
Half Baths:	1

#### Garage

Garage Size:	3
Garage Door Location:	Front
Garage Type:	TandemUnder

#### Roof Pitches

Primary:	4:12
----------	------

#### Wall Heights

Main:	10'-0"
Upper:	9'-0"
Lower:	9'-0"

#### Foundation Type

Daylight Basement

#### Roof Framing

Trusses

#### Floor Load

Live (lbs):	40 PSF
Dead (lbs):	10 PSF

#### Roof Load

Live (lbs):	25 PSF
Dead (lbs):	15 PSF
Wind:	85 MPH

#### Design Features

- Bonus Space @ Lower Floor
- Den/Office
- Front and Rear Porch
- Great Room
- Laundry Room @ Upper Floor
- Master Bedroom @ Upper Floor Front
- Narrow Lot