

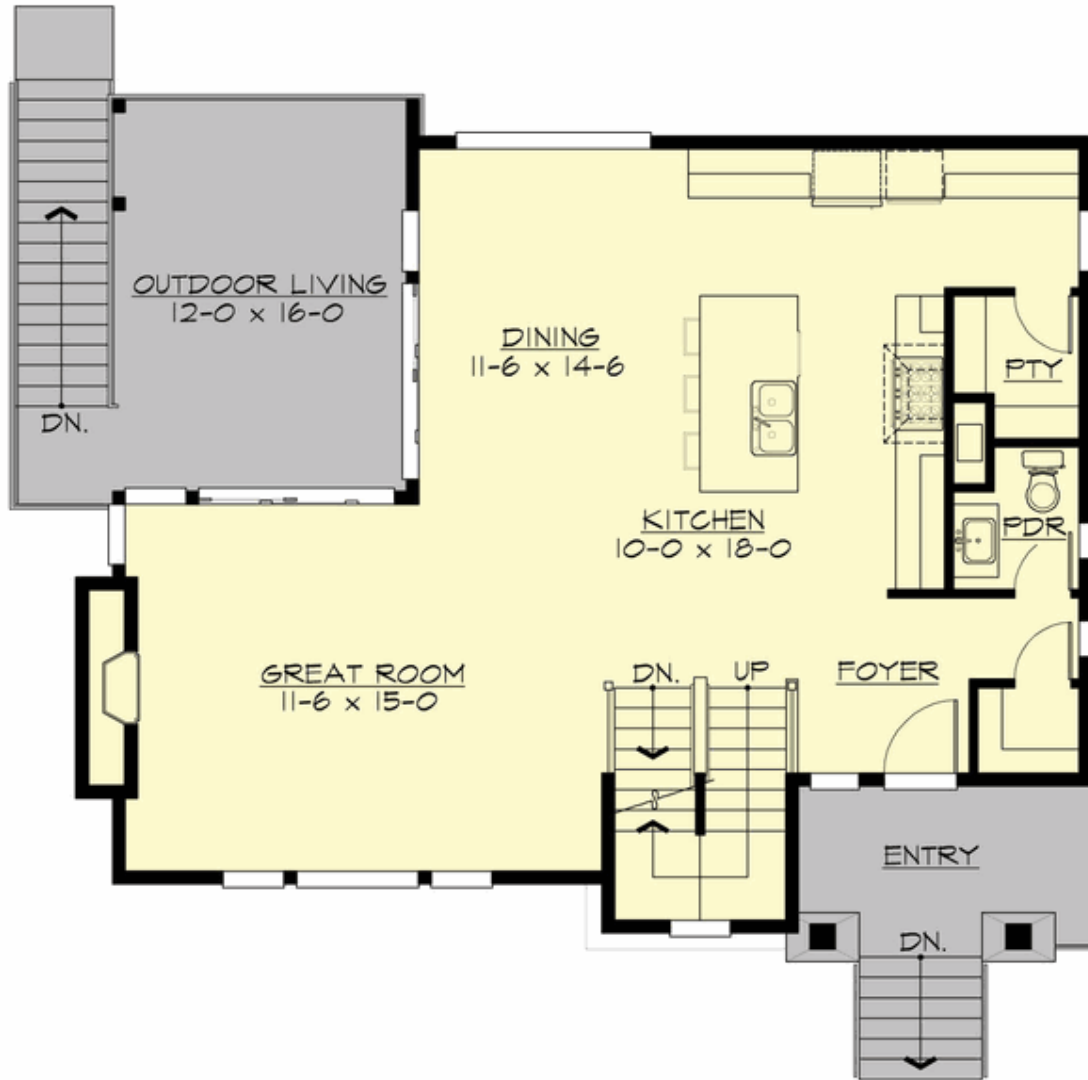
## CHARON - PLAN M2620B2FU-1

Total Area: 2684 sq. ft.  
Garage Area: 560 sq. ft.  
Garage Area: 560 sq. ft.  
Garage Size: 2  
Stories: 3  
Bedrooms: 3  
Full Baths: 2  
Half Baths: 1  
Width: 40'-0"  
Depth: 35'-0"  
Height: 23'-6"  
Foundation: Slab On Grade



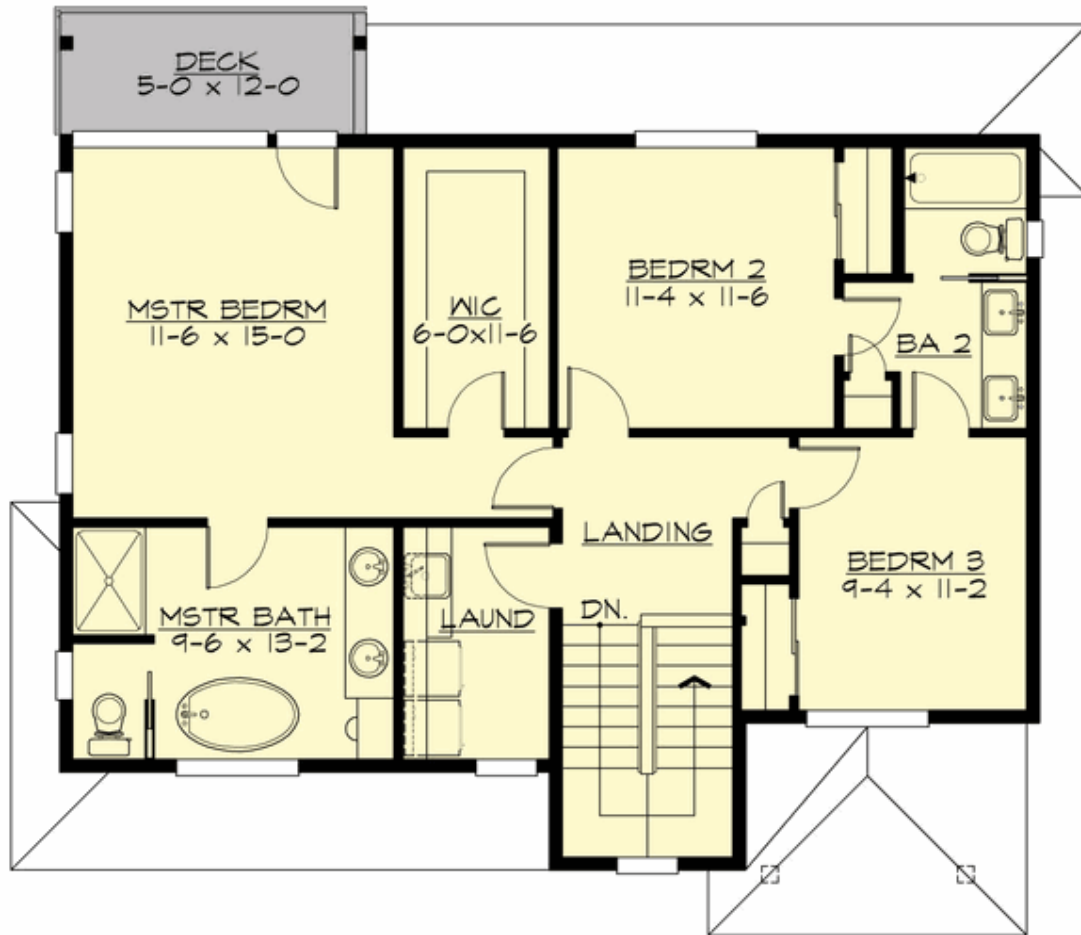
## CHARON - PLAN M2620B2FU-1

### MAIN FLOOR



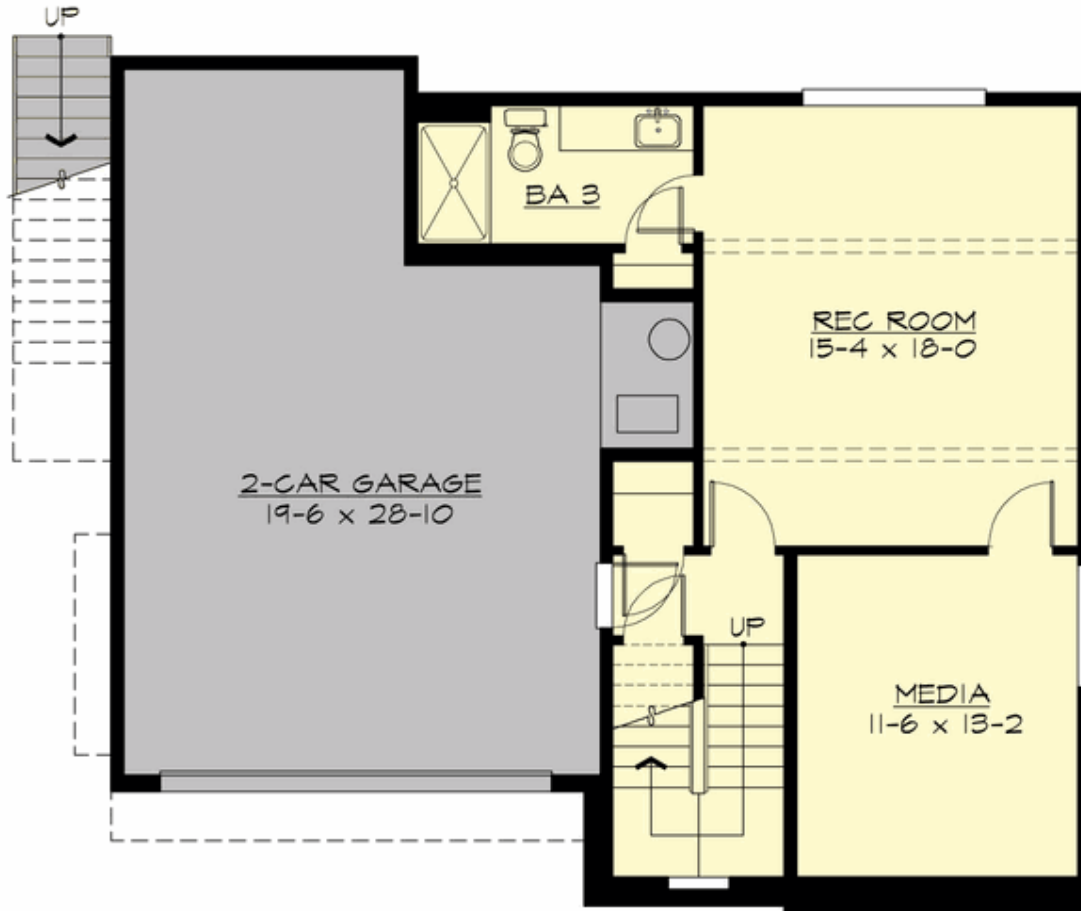
## CHARON - PLAN M2620B2FU-1

### UPPER FLOOR



**CHARON - PLAN M2620B2FU-1**

**LOWER FLOOR**





## CHARON - PLAN M2620B2FU-1

### PLAN DETAILS

#### Area Summary

Total Area:	2684 sq. ft.
Main Floor:	1028 sq. ft.
Upper Floor:	977 sq. ft.
Lower Floor:	679 sq. ft.
Garage Floor:	560 sq. ft.

#### General Information

Stories:	3
Width:	40'-0"
Depth:	35'-0"
Height:	23'-6"

#### Architectural Style

Contemporary  
Modern  
Prairie

#### Number of Rooms

Bedrooms:	3
Full Baths:	2
Half Baths:	1

#### Garage

Garage Size:	2
Garage Door Location:	Front
Garage Type:	Under

#### Roof Pitches

Primary:	4:12
Secondary:	3:12

#### Wall Heights

Main:	9'-0"
Upper:	8'-0"
Lower:	9'-0"

#### Foundation Type

Slab On Grade

#### Roof Framing

Trusses

#### Floor Load

Live (lbs):	40 PSF
Dead (lbs):	10 PSF

#### Roof Load

Live (lbs):	25 PSF
Dead (lbs):	15 PSF
Wind:	85 MPH

#### Design Features

- Bonus Space @ Lower Floor
- Front and Rear Porch
- Great Room
- Laundry Room @ Upper Floor
- Master Bedroom @ Upper Floor Rear
- Narrow Lot
- View Lot - Rear