

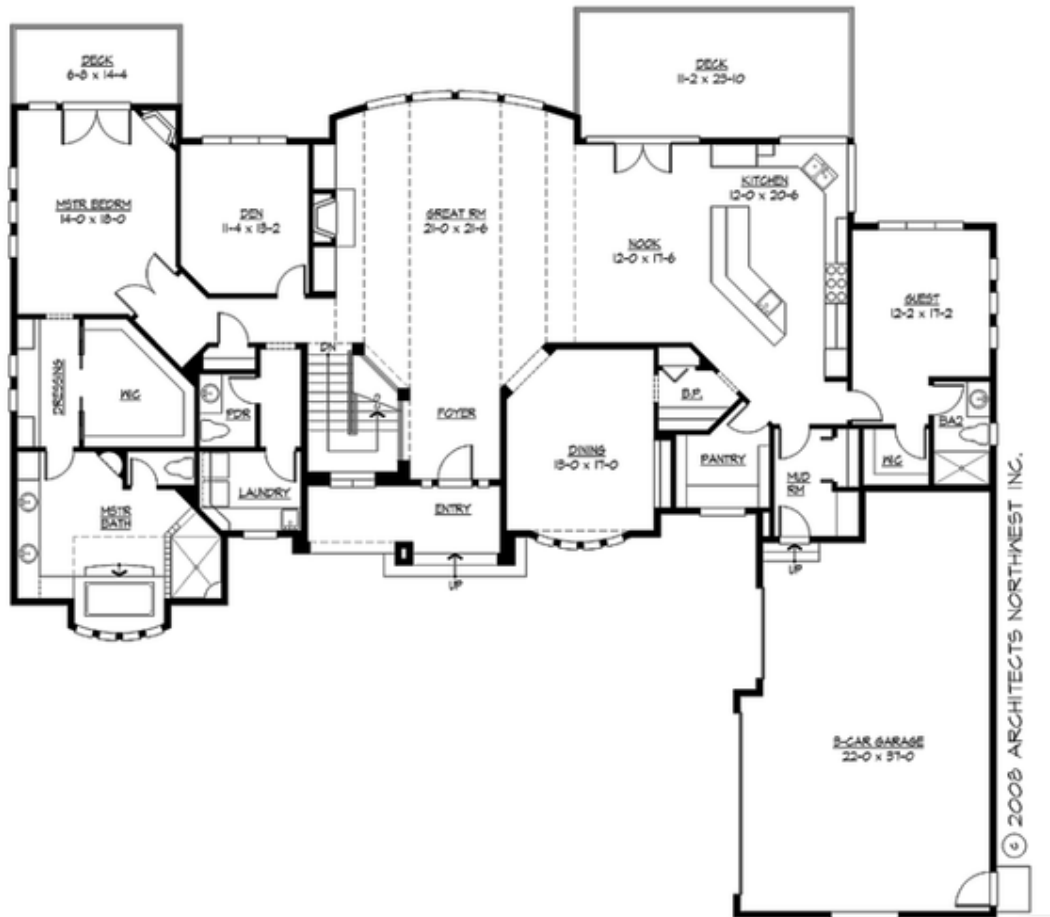
## OLYMPUS VIEW - PLAN R5273A3S-0DB

Total Area: 5273 sq. ft.  
Garage Area: 785 sq. ft.  
Garage Size: 3  
Stories: 2  
Bedrooms: 4  
Full Baths: 4  
Half Baths: 2  
Width: 86'-6"  
Depth: 72'-6"  
Height: 17'-6"  
Foundation: Daylight Basement



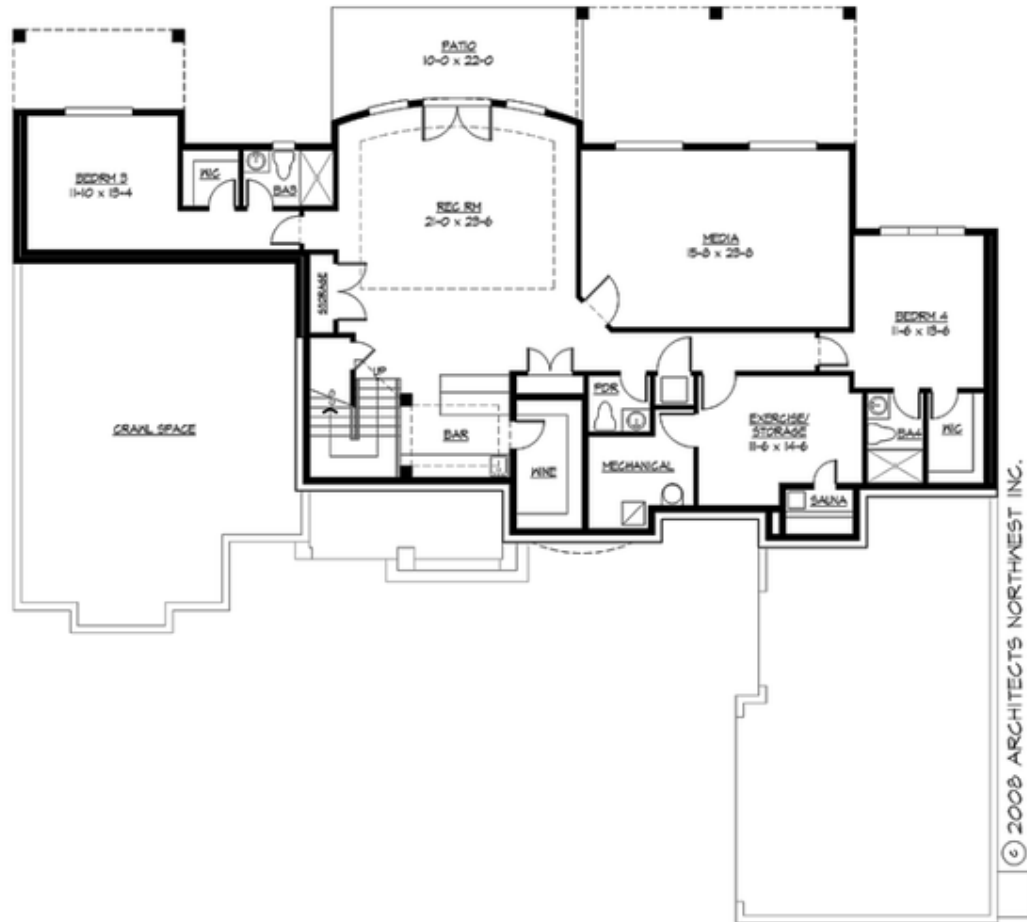
## OLYMPUS VIEW - PLAN R5273A3S-0DB

### MAIN FLOOR



## OLYMPUS VIEW - PLAN R5273A3S-0DB

### LOWER FLOOR





## OLYMPUS VIEW - PLAN R5273A3S-0DB

### PLAN DETAILS

#### Area Summary

Total Area: 5273 sq. ft.  
Main Floor: 2969 sq. ft.  
Lower Floor: 2304 sq. ft.  
Garage Floor: 785 sq. ft.

#### General Information

Stories: 2  
Width: 86'-6"  
Depth: 72'-6"  
Height: 17'-6"

#### Architectural Style

Contemporary  
Northwest  
Prairie

#### Number of Rooms

Bedrooms: 4  
Full Baths: 4  
Half Baths: 2

#### Garage

Garage Size: 3  
Garage Door Location: Side

#### Roof Pitches

Primary: 5:12

#### Wall Heights

Main: 9'-0"  
Upper: 0'-0"  
3rd Floor: 0'-0"  
Lower: 9'-0"

#### Foundation Type

Daylight Basement

#### Roof Framing

Trusses

#### Floor Load

Live (lbs): 40 PSF  
Dead (lbs): 10 PSF

#### Roof Load

Live (lbs): 25 PSF  
Dead (lbs): 15 PSF  
Wind: 85 MPH

#### Design Features

- Bonus Space @ Lower Floor
- Den/Office
- Great Room
- Laundry Room @ Main & Upper Floor
- Master Bedroom @ Main Floor Rear
- View Lot - Rear