

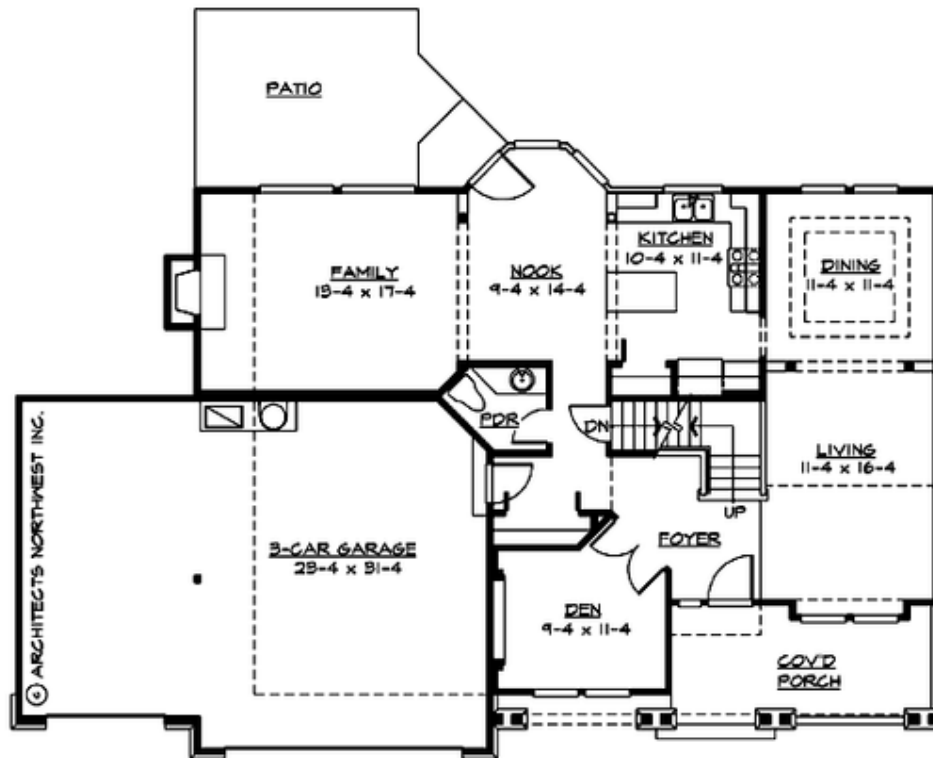
## KETTLE CREEK PARK - PLAN M2250A3F-0DB

Total Area: 3401 sq. ft.  
Garage Area: 730 sq. ft.  
Garage Area: 730 sq. ft.  
Garage Size: 3  
Stories: 3  
Bedrooms: 3  
Full Baths: 2  
Half Baths: 1  
Width: 62'-0"  
Depth: 41'-0"  
Height: 25'-0"  
Foundation: Daylight Basement



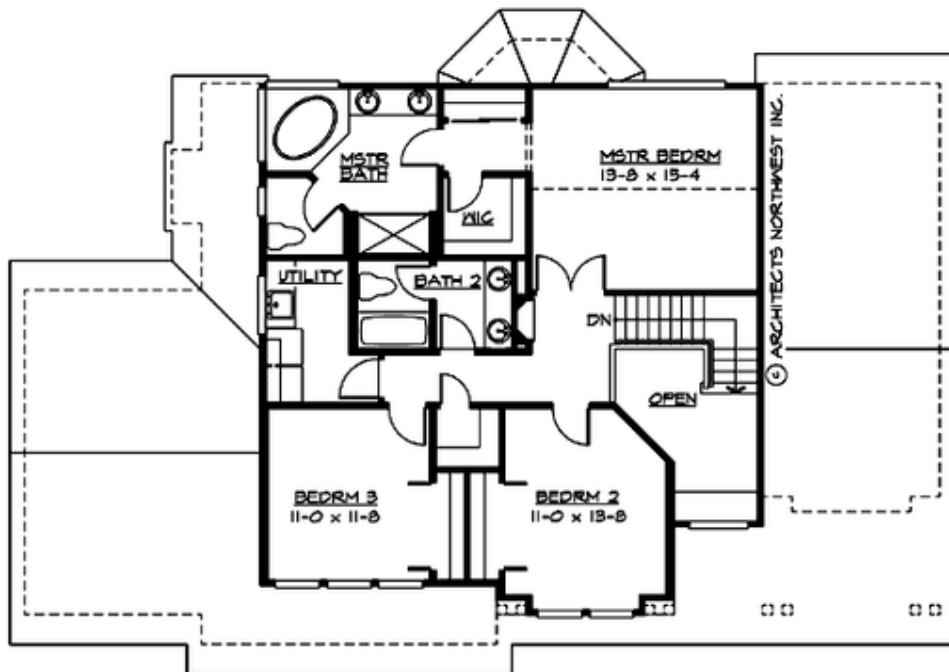
## KETTLE CREEK PARK - PLAN M2250A3F-0DB

### MAIN FLOOR



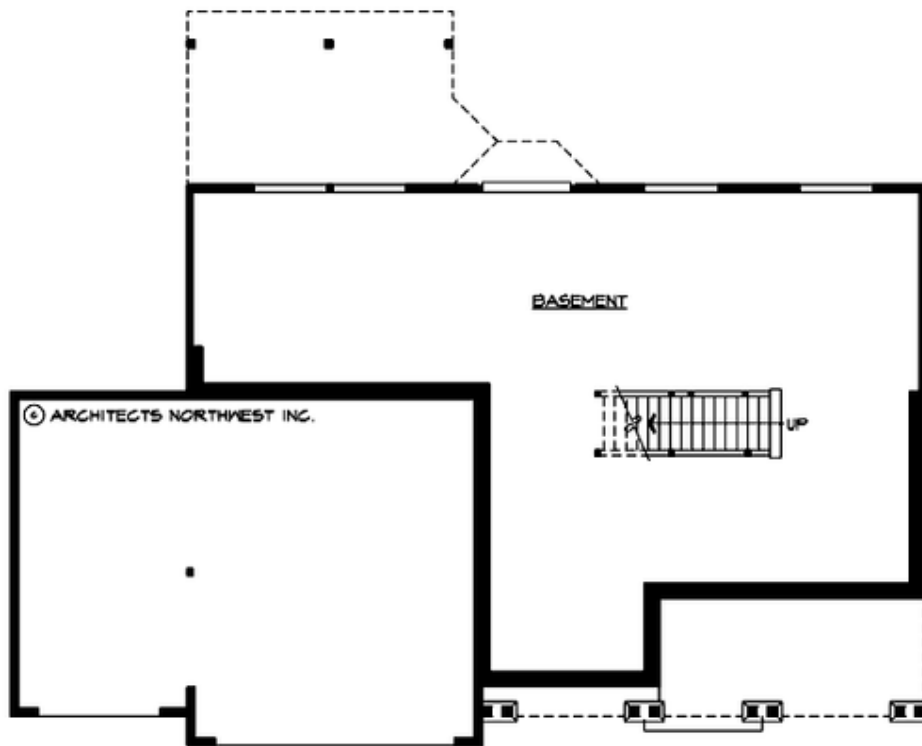
## KETTLE CREEK PARK - PLAN M2250A3F-0DB

### UPPER FLOOR



**KETTLE CREEK PARK - PLAN M2250A3F-0DB**

**LOWER FLOOR**



## KETTLE CREEK PARK - PLAN M2250A3F-0DB

### PLAN DETAILS

#### Area Summary

Total Area:	3401 sq. ft.
Main Floor:	1230 sq. ft.
Upper Floor:	1020 sq. ft.
Lower Floor:	1151 sq. ft.
Garage Floor:	730 sq. ft.

#### General Information

Stories:	3
Width:	62'-0"
Depth:	41'-0"
Height:	25'-0"

#### Architectural Style

Craftsman  
Farmhouse  
Northwest

#### Number of Rooms

Bedrooms:	3
Full Baths:	2
Half Baths:	1

#### Garage

Garage Size:	3
Garage Door Location:	Front

#### Roof Pitches

Primary:	6:12
----------	------

#### Wall Heights

Main:	8'-0"
Upper:	8'-0"
3rd Floor:	0'-0"
Lower:	9'-0"

#### Foundation Type

Daylight Basement

#### Roof Framing

Trusses

#### Floor Load

Live (lbs):	40 PSF
Dead (lbs):	10 PSF

#### Roof Load

Live (lbs):	25 PSF
Dead (lbs):	15 PSF
Wind:	85 MPH

#### Design Features

- Bonus Space @ Lower Floor
- Den/Office
- Front Porch
- Laundry Room @ Upper Floor
- Living & Family Room
- Master Bedroom @ Upper Floor Rear
- View Lot - Rear