

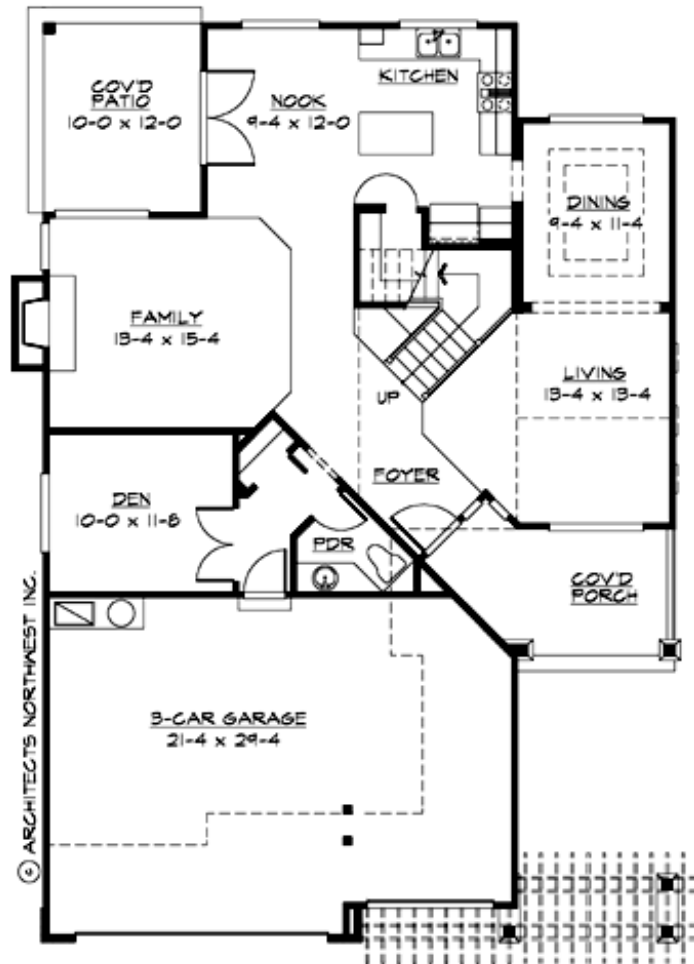
## HATTERAS - PLAN M2415A3F-0

Total Area: 2415 sq. ft.  
Garage Area: 623 sq. ft.  
Garage Area: 623 sq. ft.  
Garage Size: 3  
Stories: 2  
Bedrooms: 4  
Full Baths: 2  
Half Baths: 1  
Width: 40'-0"  
Depth: 58'-0"  
Height: 27'-6"  
Foundation: Crawl Space



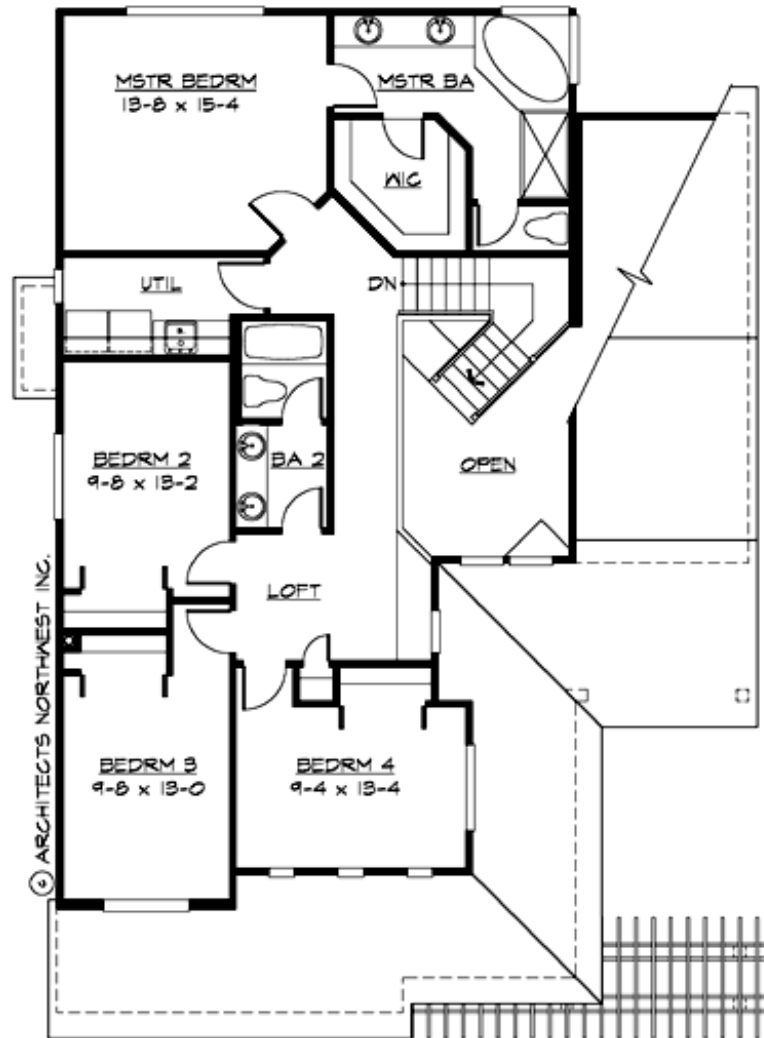
## HATTERAS - PLAN M2415A3F-0

### MAIN FLOOR



## HATTERAS - PLAN M2415A3F-0

### UPPER FLOOR





## HATTERAS - PLAN M2415A3F-0

### PLAN DETAILS

#### Area Summary

Total Area:	2415 sq. ft.
Main Floor:	1200 sq. ft.
Upper Floor:	1215 sq. ft.
Garage Floor:	623 sq. ft.

#### General Information

Stories:	2
Width:	40'-0"
Depth:	58'-0"
Height:	27'-6"

#### Architectural Style

Craftsman  
Northwest  
Traditional

#### Number of Rooms

Bedrooms:	4
Full Baths:	2
Half Baths:	1

#### Garage

Garage Size:	3
Garage Door Location:	Front

#### Roof Pitches

Primary:	8:12
Secondary:	4:12

#### Wall Heights

Main:	8'-0"
Upper:	8'-0"
3rd Floor:	0'-0"
Lower:	0'-0"

#### Foundation Type

Crawl Space

#### Roof Framing

Trusses

#### Floor Load

Live (lbs):	40 PSF
Dead (lbs):	10 PSF

#### Roof Load

Live (lbs):	25 PSF
Dead (lbs):	15 PSF
Wind:	85 MPH

#### Design Features

- Den/Office
- Front Porch
- Laundry Room @ Upper Floor
- Living & Family Room
- Master Bedroom @ Upper Floor Rear
- Narrow Lot
- Small Plan