

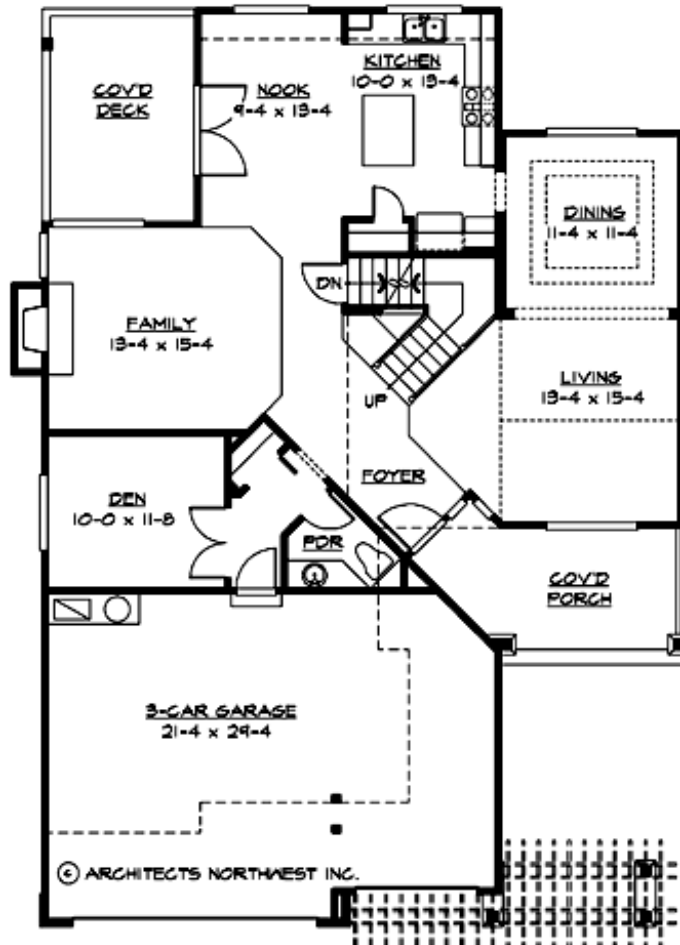
## HATTERAS PARK CREST - PLAN M2510A3F-0DB

Total Area: 3420 sq. ft.  
Garage Area: 630 sq. ft.  
Garage Area: 630 sq. ft.  
Garage Size: 3  
Stories: 3  
Bedrooms: 5  
Full Baths: 3  
Half Baths: 1  
Width: 42'-0"  
Depth: 60'-0"  
Height: 27'-6"  
Foundation: Daylight Basement



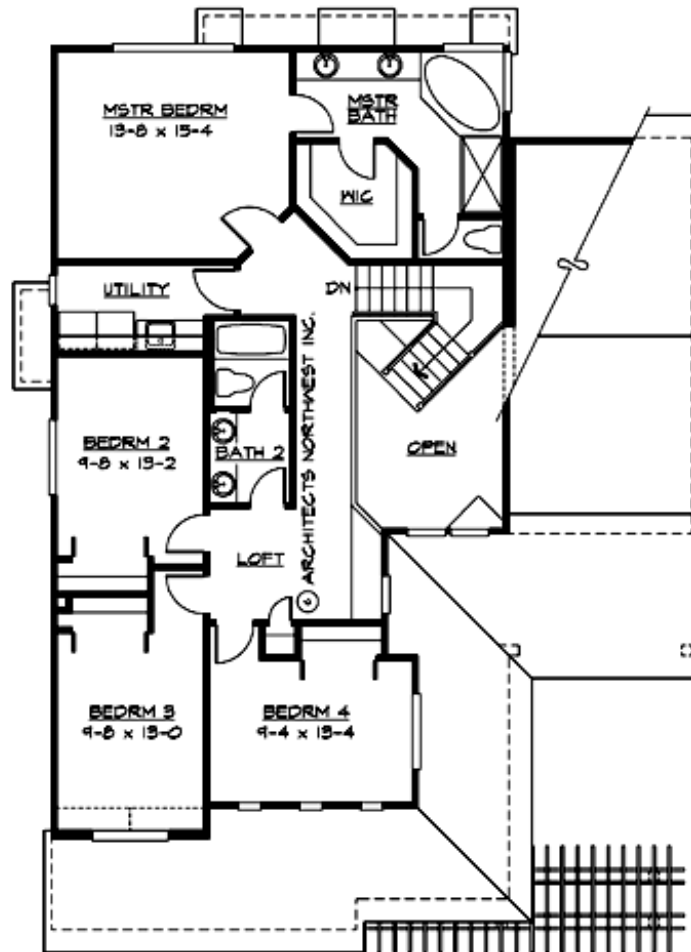
## HATTERAS PARK CREST - PLAN M2510A3F-0DB

### MAIN FLOOR



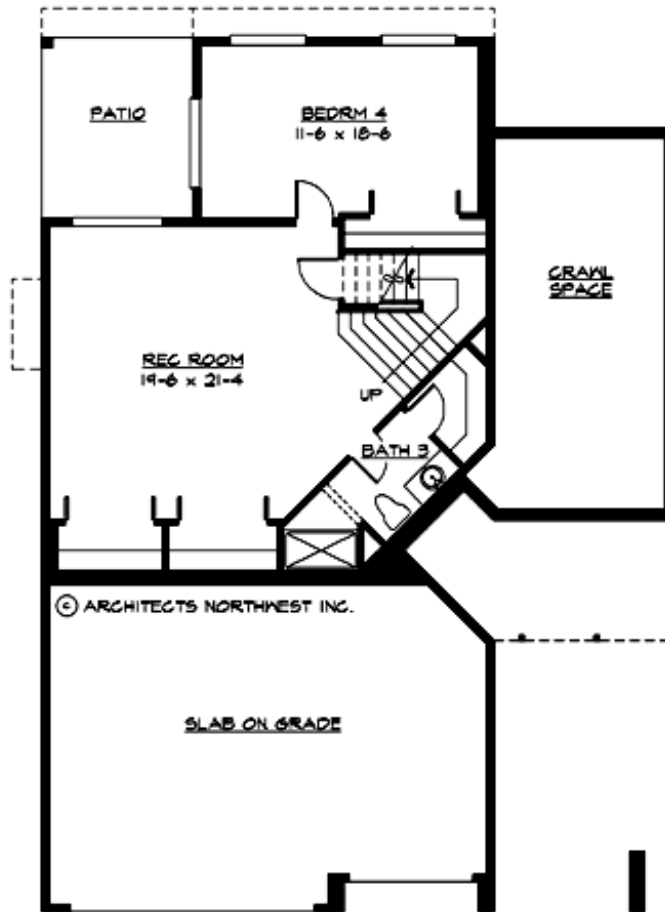
## HATTERAS PARK CREST - PLAN M2510A3F-0DB

### UPPER FLOOR



## HATTERAS PARK CREST - PLAN M2510A3F-0DB

### LOWER FLOOR





## HATTERAS PARK CREST - PLAN M2510A3F-0DB

### PLAN DETAILS

#### Area Summary

Total Area:	3420 sq. ft.
Main Floor:	1295 sq. ft.
Upper Floor:	1215 sq. ft.
Lower Floor:	910 sq. ft.
Garage Floor:	630 sq. ft.

#### General Information

Stories:	3
Width:	42'-0"
Depth:	60'-0"
Height:	27'-6"

#### Architectural Style

Craftsman  
Northwest  
Traditional

#### Number of Rooms

Bedrooms:	5
Full Baths:	3
Half Baths:	1

#### Garage

Garage Size:	3
Garage Door Location:	Front

#### Roof Pitches

Primary:	8:12
Secondary:	4:12

#### Wall Heights

Main:	8'-0"
Upper:	8'-0"
3rd Floor:	0'-0"
Lower:	8'-0"

#### Foundation Type

Daylight Basement

#### Roof Framing

Trusses

#### Floor Load

Live (lbs):	40 PSF
Dead (lbs):	10 PSF

#### Roof Load

Live (lbs):	25 PSF
Dead (lbs):	15 PSF
Wind:	85 MPH

#### Design Features

- Bonus Space @ Lower Floor
- Den/Office
- Front Porch
- Laundry Room @ Upper Floor
- Living & Family Room
- Master Bedroom @ Upper Floor Rear
- Narrow Lot