

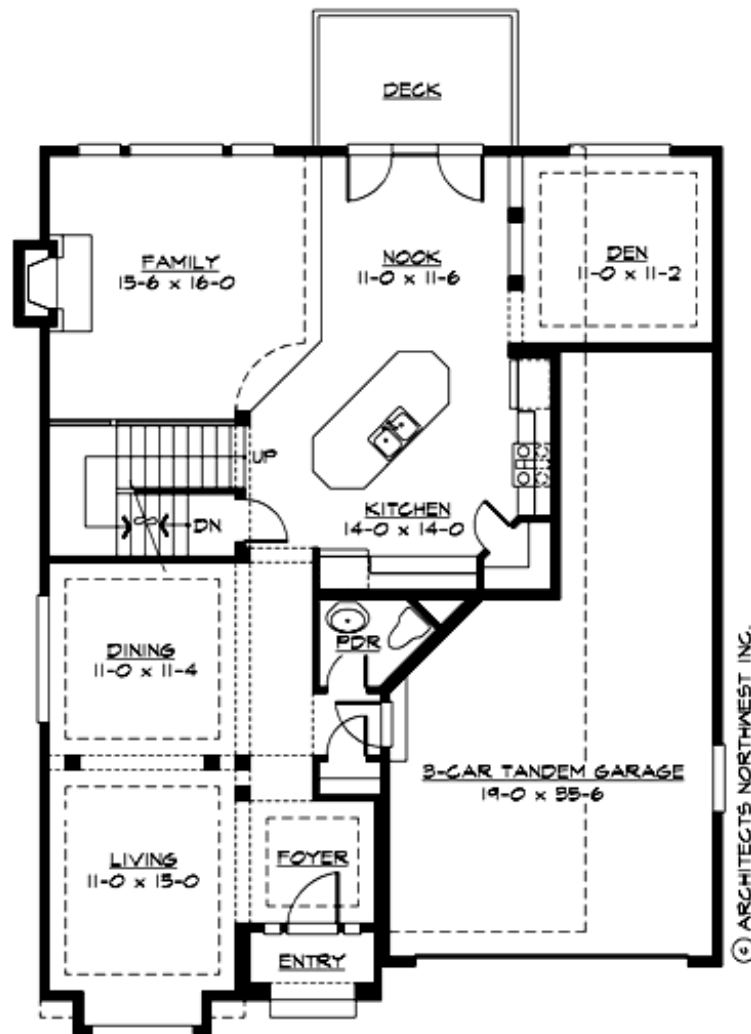
HADLEY PARK - PLAN M2520B3FT-0DB

Total Area: 3327 sq. ft.
Garage Area: 552 sq. ft.
Garage Area: 552 sq. ft.
Garage Size: 3
Stories: 3
Bedrooms: 4
Full Baths: 3
Half Baths: 1
Width: 40'-0"
Depth: 52'-0"
Height: 31'-0"
Foundation: Daylight Basement



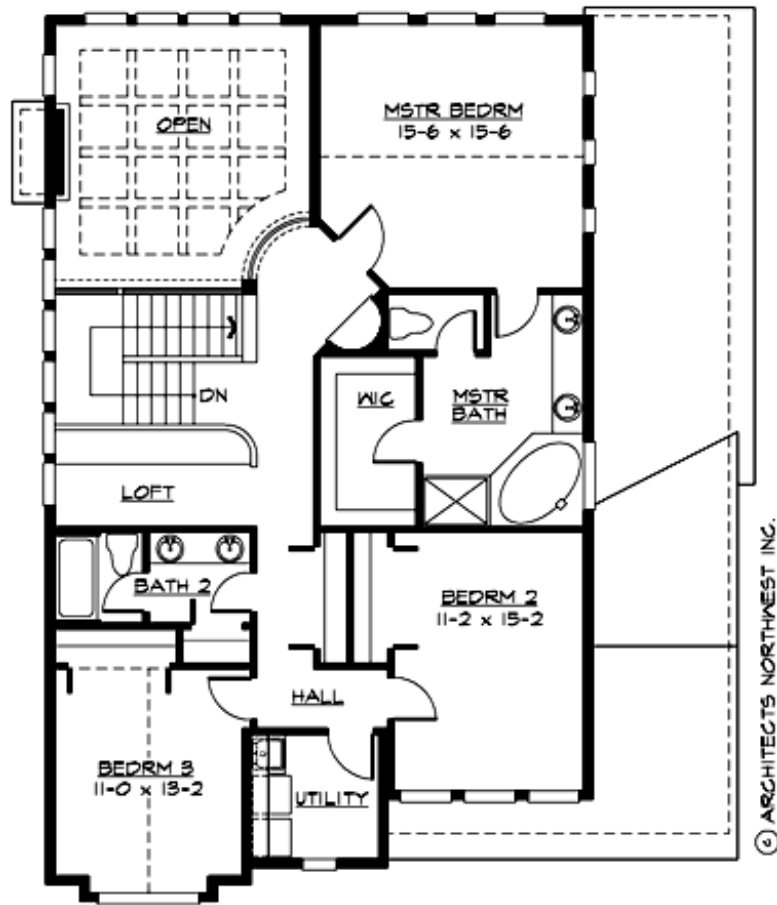
HADLEY PARK - PLAN M2520B3FT-0DB

MAIN FLOOR



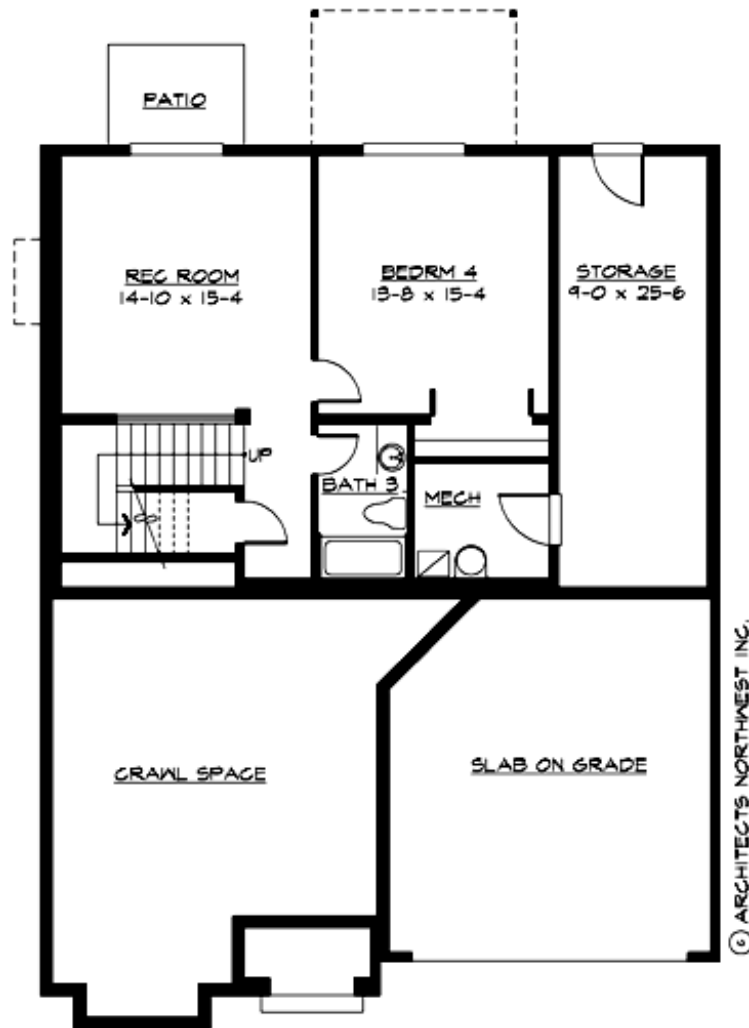
HADLEY PARK - PLAN M2520B3FT-0DB

UPPER FLOOR



HADLEY PARK - PLAN M2520B3FT-0DB

LOWER FLOOR





HADLEY PARK - PLAN M2520B3FT-0DB

PLAN DETAILS

Area Summary

Total Area: 3327 sq. ft.
Main Floor: 1380 sq. ft.
Upper Floor: 1252 sq. ft.
Lower Floor: 695 sq. ft.
Garage Floor: 552 sq. ft.

General Information

Stories: 3
Width: 40'-0"
Depth: 52'-0"
Height: 31'-0"

Architectural Style

Craftsman
European
Tudor

Number of Rooms

Bedrooms: 4
Full Baths: 3
Half Baths: 1

Garage

Garage Size: 3
Garage Door Location: Front
Garage Type: Tandem

Roof Pitches

Primary: 8:12
Secondary: 12:12

Wall Heights

Main: 9'-0"
Upper: 8'-0"
3rd Floor: 0'-0"
Lower: 9'-0"

Foundation Type

Daylight Basement

Roof Framing

Trusses

Floor Load

Live (lbs): 40 PSF
Dead (lbs): 10 PSF

Roof Load

Live (lbs): 25 PSF
Dead (lbs): 15 PSF
Wind: 85 MPH

Design Features

- Bonus Space @ Lower Floor
- Den/Office
- Laundry Room @ Upper Floor
- Living & Family Room
- Master Bedroom @ Upper Floor Rear
- Narrow Lot