

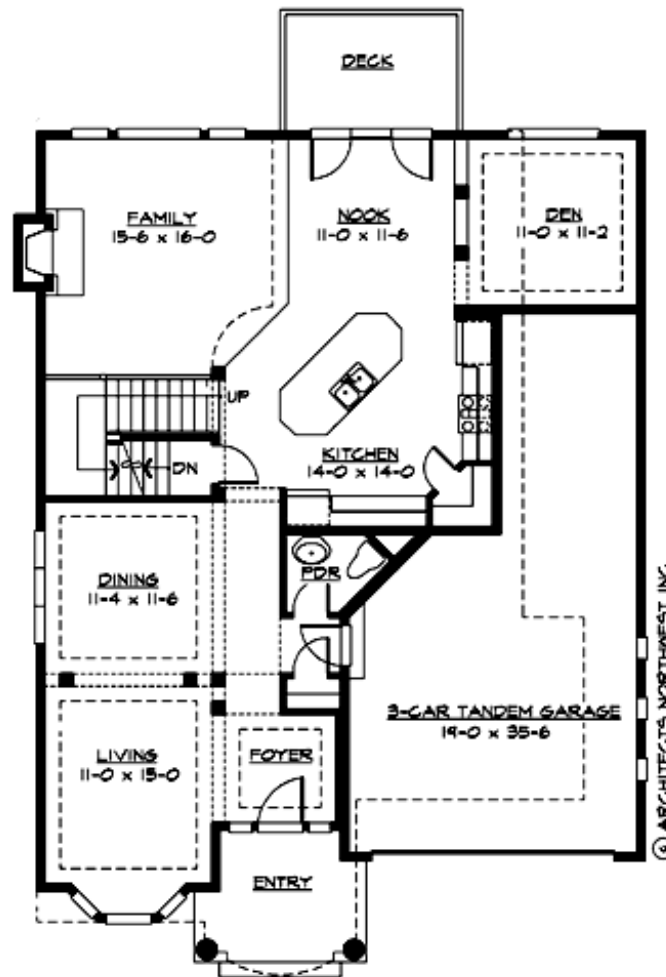
## **TALUS RIDGE - PLAN M2520C3FT-0DB**

Total Area: 3368 sq. ft.  
Garage Area: 552 sq. ft.  
Garage Area: 552 sq. ft.  
Garage Size: 3  
Stories: 3  
Bedrooms: 4  
Full Baths: 3  
Half Baths: 1  
Width: 40'-0"  
Depth: 55'-0"  
Height: 29'-0"  
Foundation: Daylight Basement



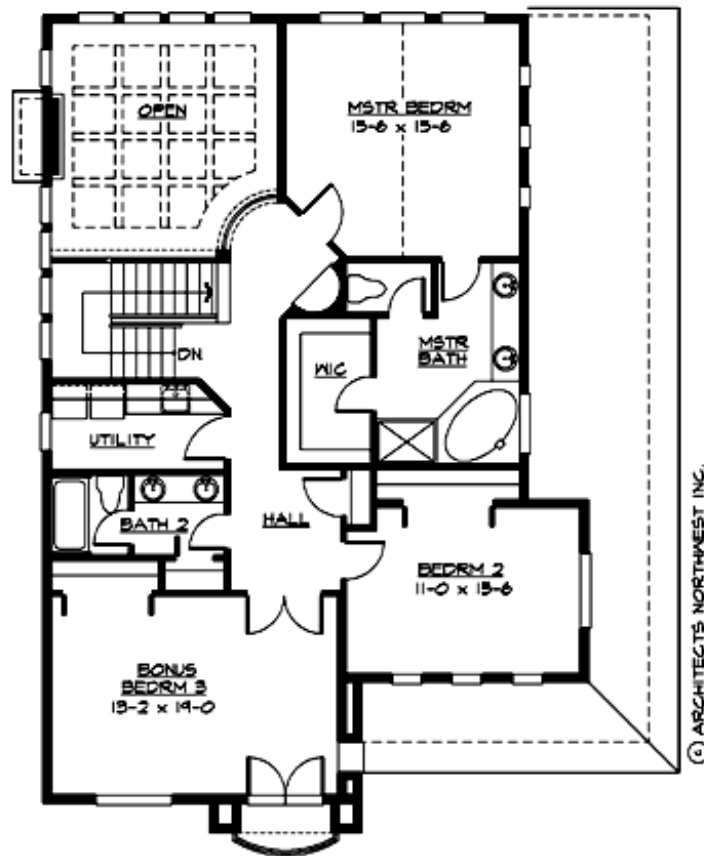
## TALUS RIDGE - PLAN M2520C3FT-0DB

### MAIN FLOOR



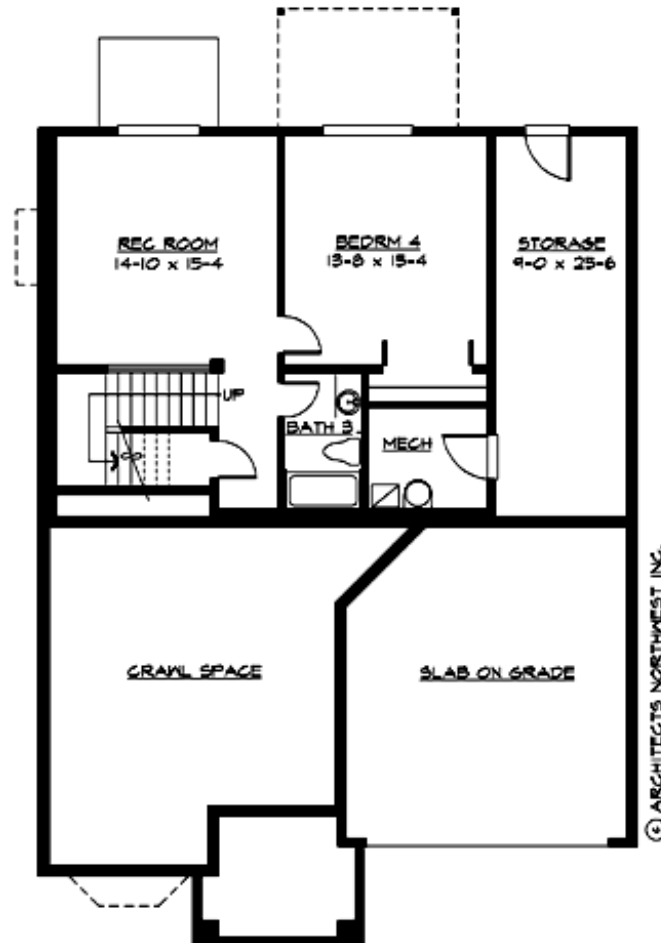
## TALUS RIDGE - PLAN M2520C3FT-0DB

### UPPER FLOOR



## TALUS RIDGE - PLAN M2520C3FT-0DB

### LOWER FLOOR





## TALUS RIDGE - PLAN M2520C3FT-0DB

### PLAN DETAILS

#### Area Summary

Total Area:	3368 sq. ft.
Main Floor:	1378 sq. ft.
Upper Floor:	1295 sq. ft.
Lower Floor:	695 sq. ft.
Garage Floor:	552 sq. ft.

#### General Information

Stories:	3
Width:	40'-0"
Depth:	55'-0"
Height:	29'-0"

#### Architectural Style

Hampton  
Shingle  
Traditional

#### Number of Rooms

Bedrooms:	4
Full Baths:	3
Half Baths:	1

#### Garage

Garage Size:	3
Garage Door Location:	Front
Garage Type:	Tandem

#### Roof Pitches

Primary:	8:12
Secondary:	4:12

#### Wall Heights

Main:	9'-0"
Upper:	8'-0"
3rd Floor:	0'-0"
Lower:	9'-0"

#### Foundation Type

Daylight Basement

#### Roof Framing

Trusses

#### Floor Load

Live (lbs):	40 PSF
Dead (lbs):	10 PSF

#### Roof Load

Live (lbs):	25 PSF
Dead (lbs):	15 PSF
Wind:	85 MPH

#### Design Features

- Bonus Space @ Lower Floor
- Den/Office
- Laundry Room @ Upper Floor
- Living & Family Room
- Master Bedroom @ Upper Floor Rear
- Narrow Lot