

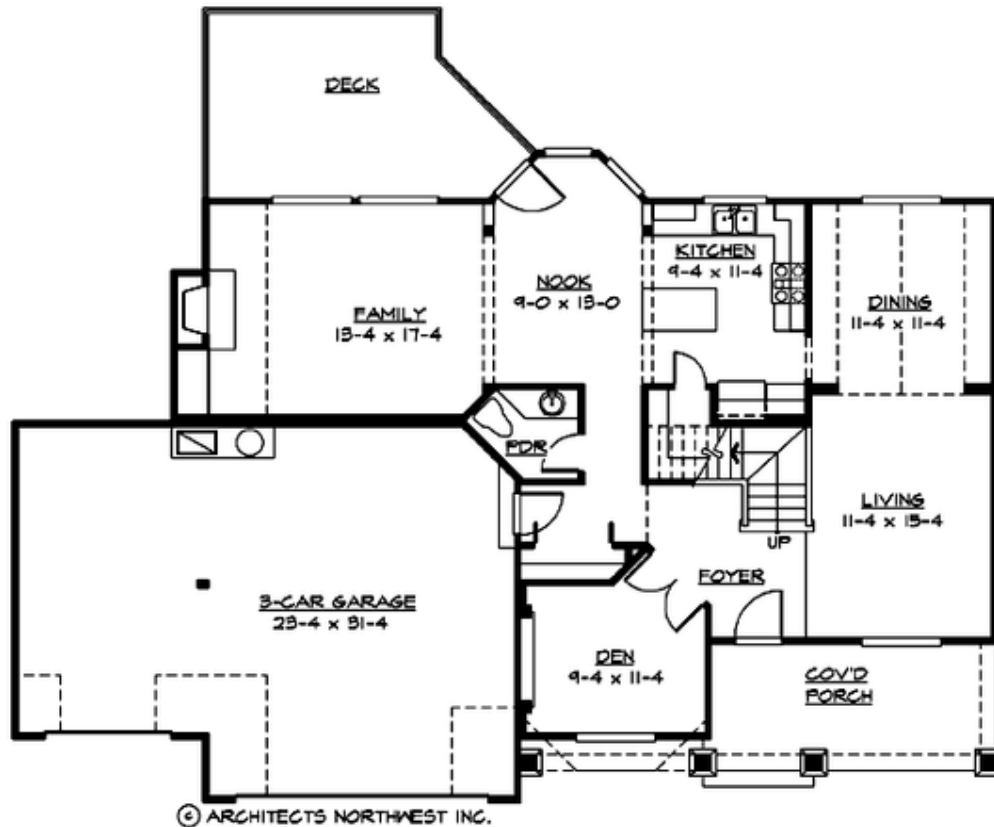
CAMDEN PARK - PLAN M2535B3F-0DB

Total Area: 3745 sq. ft.
Garage Area: 705 sq. ft.
Garage Area: 705 sq. ft.
Garage Size: 3
Stories: 3
Bedrooms: 3
Full Baths: 2
Half Baths: 1
Width: 62'-0"
Depth: 41'-0"
Height: 28'-0"
Foundation: Daylight Basement



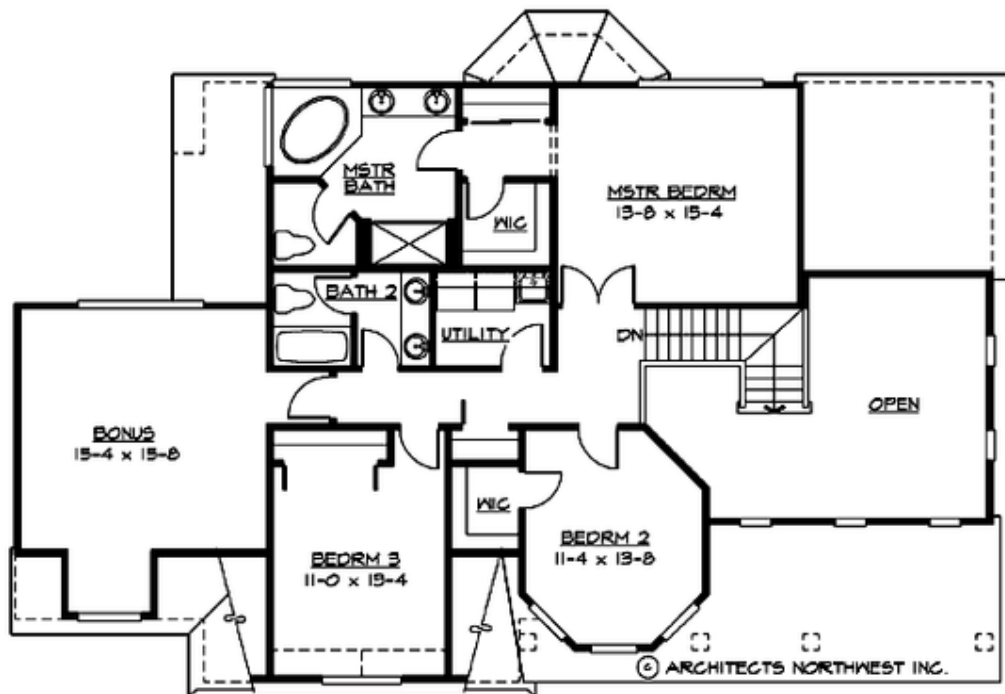
CAMDEN PARK - PLAN M2535B3F-0DB

MAIN FLOOR



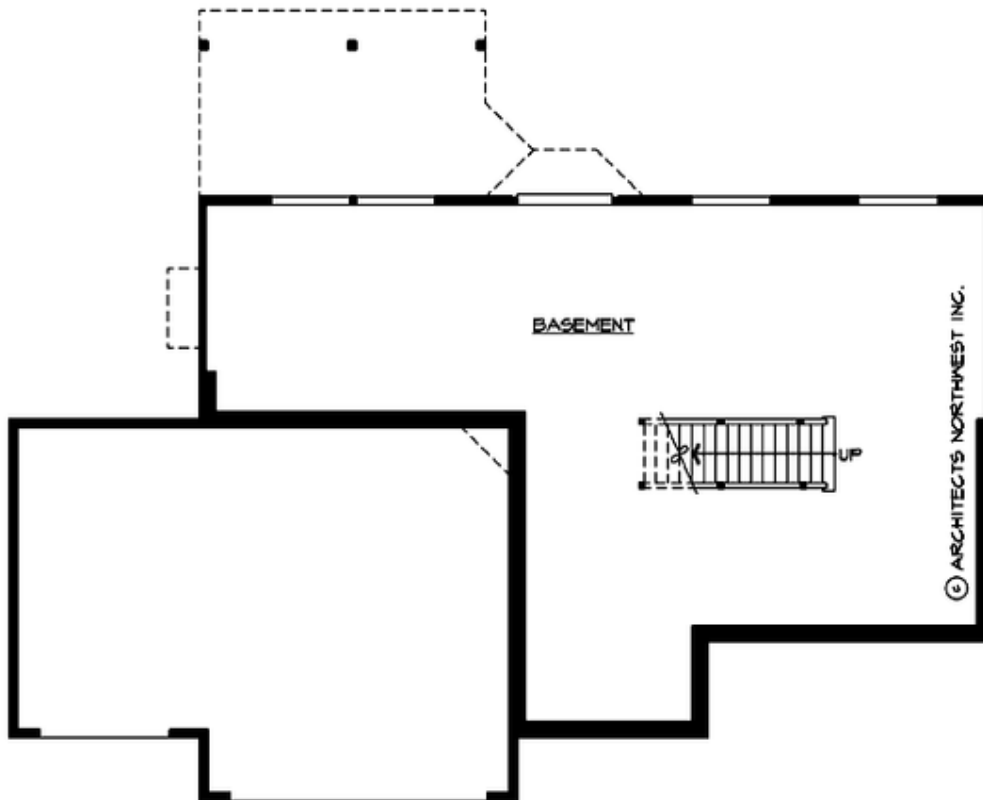
CAMDEN PARK - PLAN M2535B3F-0DB

UPPER FLOOR



CAMDEN PARK - PLAN M2535B3F-0DB

LOWER FLOOR



CAMDEN PARK - PLAN M2535B3F-0DB

PLAN DETAILS

Area Summary

Total Area:	3745 sq. ft.
Main Floor:	1235 sq. ft.
Upper Floor:	1325 sq. ft.
Lower Floor:	1185 sq. ft.
Garage Floor:	705 sq. ft.

General Information

Stories:	3
Width:	62'-0"
Depth:	41'-0"
Height:	28'-0"

Architectural Style

Cape Cod
Farmhouse
Hampton

Number of Rooms

Bedrooms:	3
Full Baths:	2
Half Baths:	1

Garage

Garage Size:	3
Garage Door Location:	Front

Roof Pitches

Primary:	8:12
Secondary:	4:12

Wall Heights

Main:	9'-0"
Upper:	8'-0"
3rd Floor:	0'-0"
Lower:	9'-0"

Foundation Type

Daylight Basement

Roof Framing

Trusses

Floor Load

Live (lbs):	40 PSF
Dead (lbs):	10 PSF

Roof Load

Live (lbs):	25 PSF
Dead (lbs):	15 PSF
Wind:	85 MPH

Design Features

- Bonus Space @ Upper Floor & Lower Floor
- Den/Office
- Front Porch
- Laundry Room @ Upper Floor
- Living & Family Room
- Master Bedroom @ Upper Floor Rear
- View Lot - Rear