

## WINDSOR - PLAN M1926A2S-0

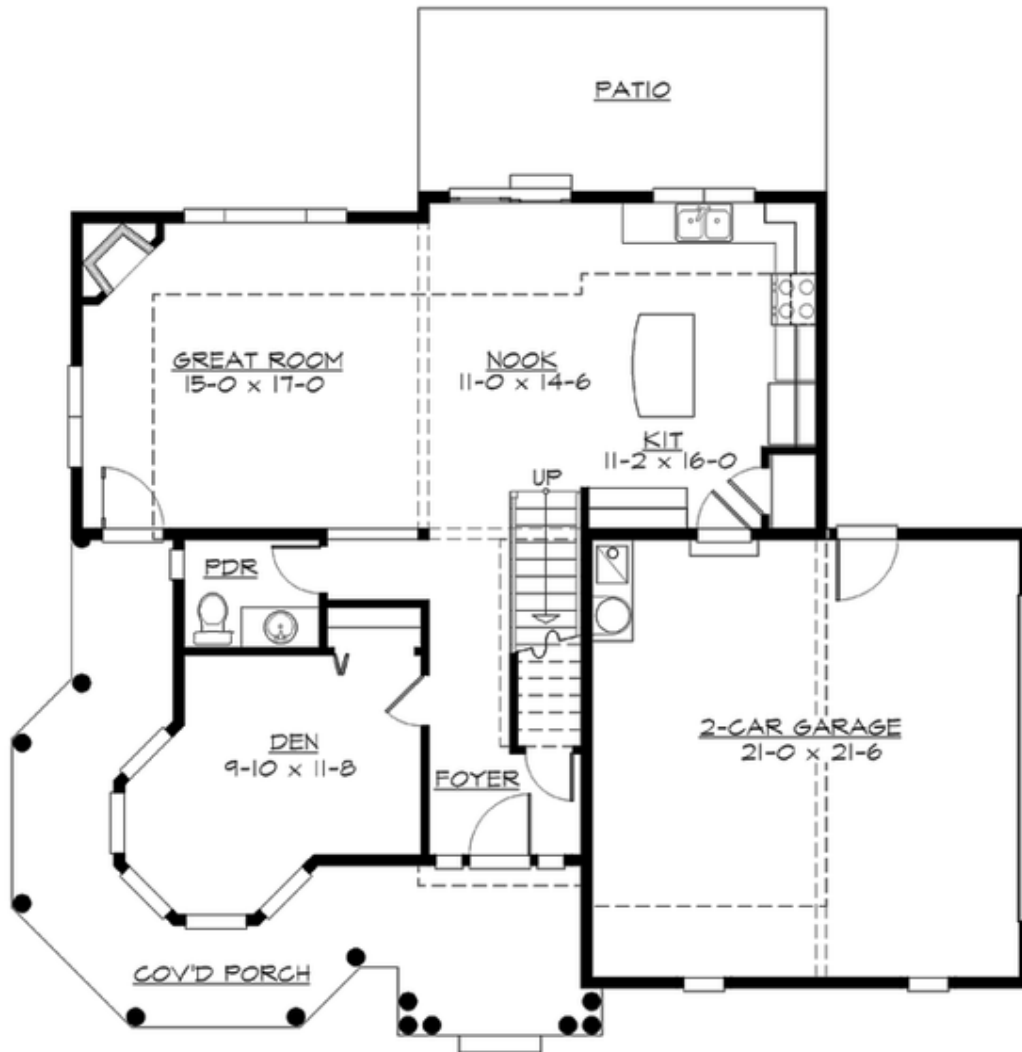
Total Area: 1926 sq. ft.  
 Garage Area: 481 sq. ft.  
 Garage Size: 2  
 Stories: 2  
 Bedrooms: 3  
 Full Baths: 2  
 Half Baths: 1  
 Width: 50'-0"  
 Depth: 41'-6"  
 Height: 31'-0"  
 Foundation: Crawl Space



***An Exciting New Victorian Designed for Today.*** The Windsor brings a fresh perspective to Victorian style, featuring a striking octagonal turret enclosing a main floor den and upper floor master suite, surrounded by a wraparound front entry porch. The updated floor plan is organized around a large great room with open dining and kitchen spaces. Upstairs are the spacious master suite, two secondary bedrooms, bathroom and convenient laundry.

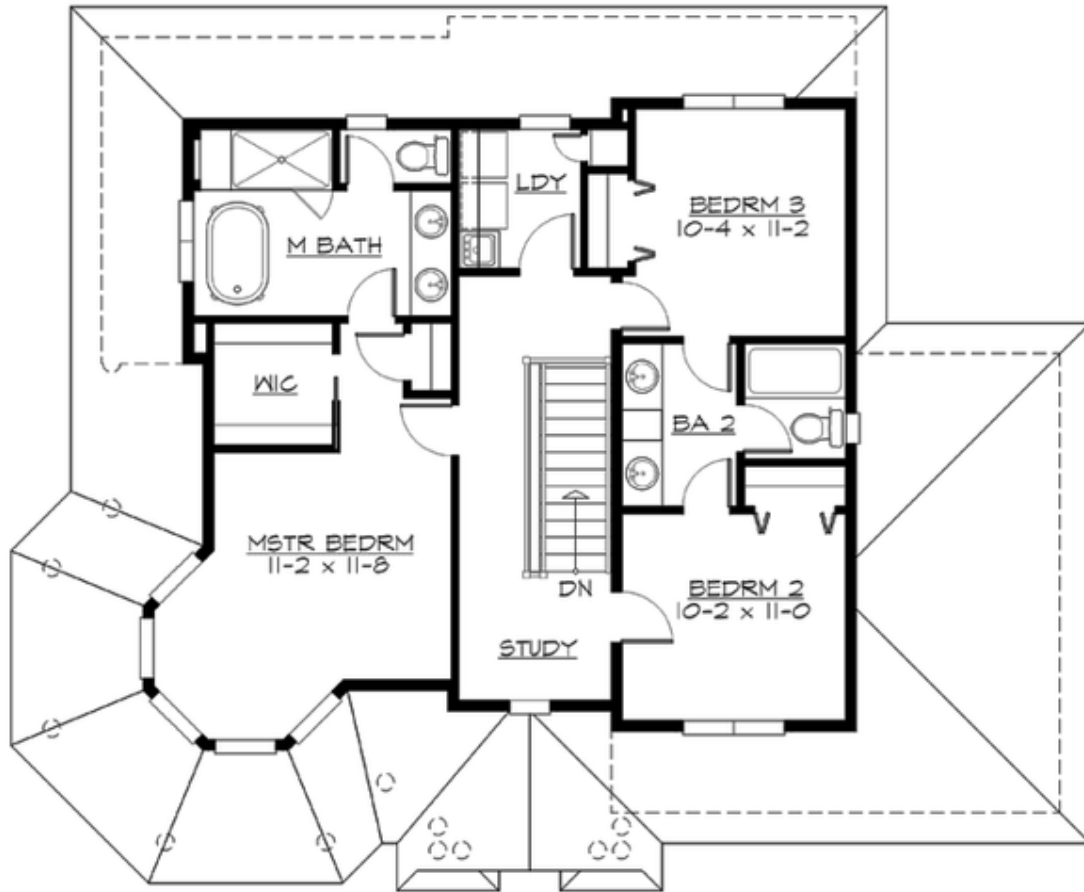
## WINDSOR - PLAN M1926A2S-0

### MAIN FLOOR



## WINDSOR - PLAN M1926A2S-0

### UPPER FLOOR



## WINDSOR - PLAN M1926A2S-0

### PLAN DETAILS

#### Area Summary

Total Area: 1926 sq. ft.  
Main Floor: 977 sq. ft.  
Upper Floor: 949 sq. ft.  
Garage Floor: 481 sq. ft.

#### General Information

Stories: 2  
Width: 50'-0"  
Depth: 41'-6"  
Height: 31'-0"

#### Architectural Style

Farmhouse  
Shingle  
Victorian

#### Number of Rooms

Bedrooms: 3  
Full Baths: 2  
Half Baths: 1

#### Garage

Garage Size: 2  
Garage Door Location: Side

#### Roof Pitches

Primary: 10:12  
Secondary: 4:12

#### Wall Heights

Main: 9'-0"  
Upper: 8'-0"  
3rd Floor: 0'-0"  
Lower: 0'-0"

#### Foundation Type

Crawl Space

#### Roof Framing

Trusses

#### Floor Load

Live (lbs): 40 PSF  
Dead (lbs): 10 PSF

#### Roof Load

Live (lbs): 25 PSF  
Dead (lbs): 15 PSF  
Wind: 85 MPH

#### Design Features

- Den/Office
- Great Room
- Laundry Room @ Upper Floor
- Master Bedroom @ Upper Floor
- Small Plan
- Wrap-Around Porch