

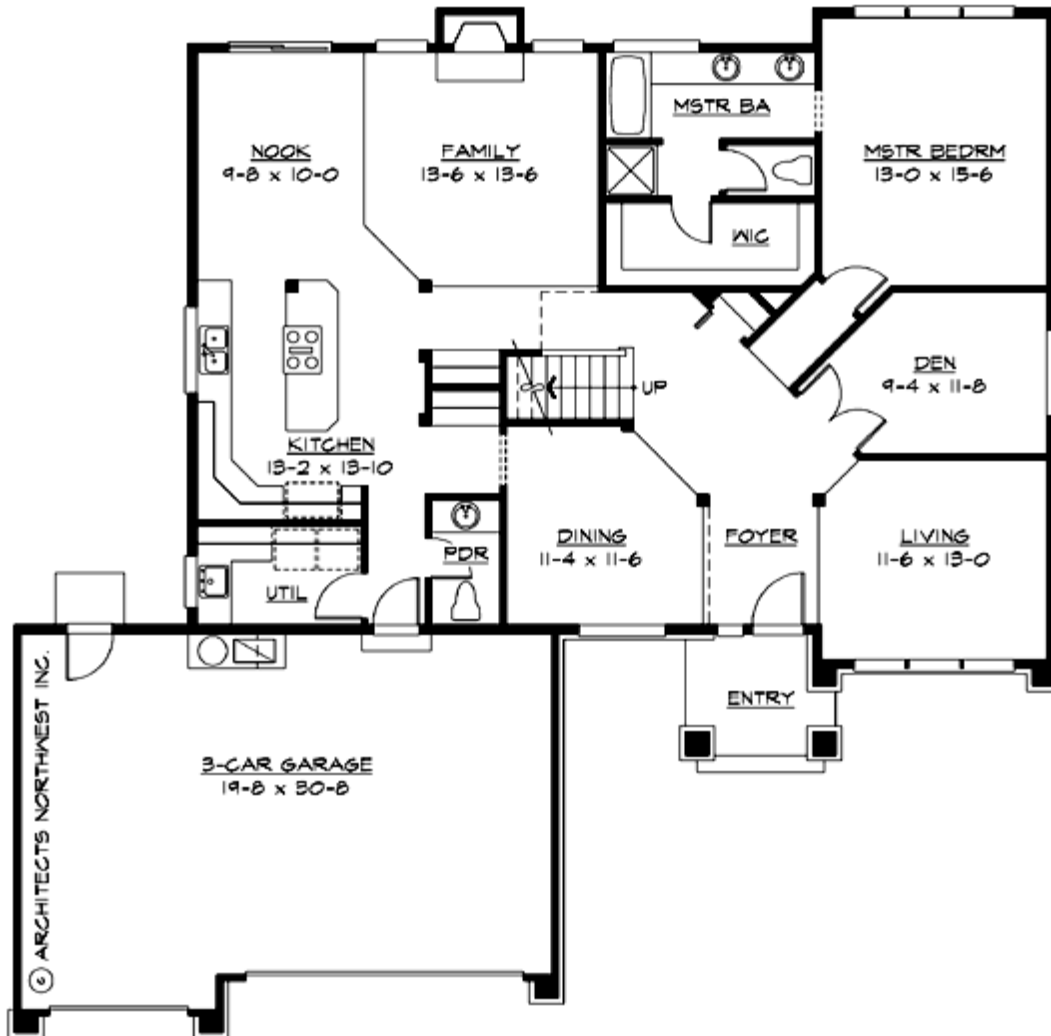
## RYE CREST - PLAN M2612A3F-0

Total Area: 2612 sq. ft.  
Garage Area: 656 sq. ft.  
Garage Area: 656 sq. ft.  
Garage Size: 3  
Stories: 2  
Bedrooms: 4  
Full Baths: 2  
Half Baths: 1  
Width: 60'-0"  
Depth: 59'-0"  
Height: 25'-0"  
Foundation: Crawl Space



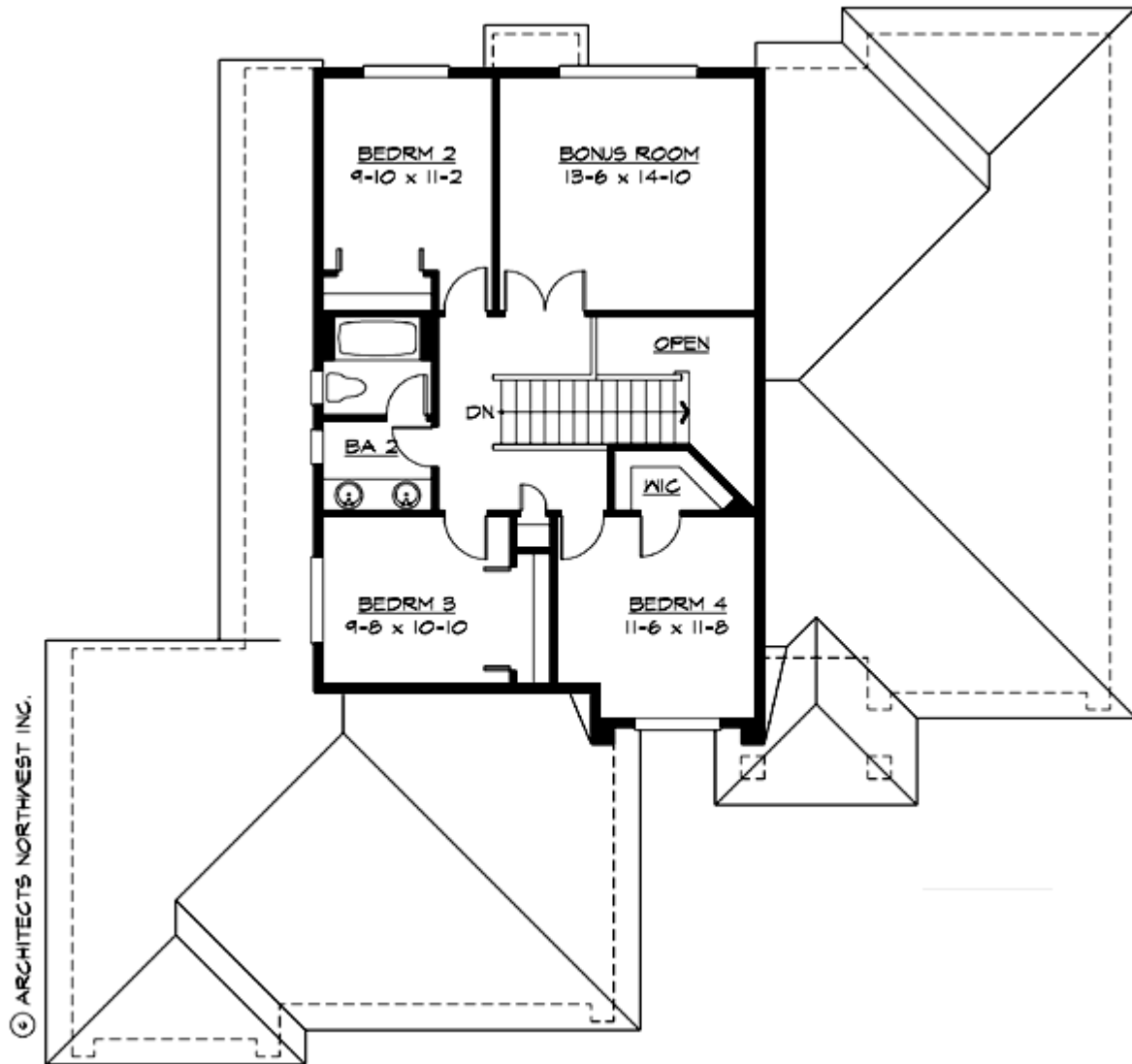
## RYE CREST - PLAN M2612A3F-0

### MAIN FLOOR



## RYE CREST - PLAN M2612A3F-0

### UPPER FLOOR



## RYE CREST - PLAN M2612A3F-0

### PLAN DETAILS

#### Area Summary

Total Area:	2612 sq. ft.
Main Floor:	1756 sq. ft.
Upper Floor:	856 sq. ft.
Garage Floor:	656 sq. ft.

#### General Information

Stories:	2
Width:	60'-0"
Depth:	59'-0"
Height:	25'-0"

#### Architectural Style

Contemporary  
Northwest  
Traditional

#### Number of Rooms

Bedrooms:	4
Full Baths:	2
Half Baths:	1

#### Garage

Garage Size:	3
Garage Door Location:	Front

#### Roof Pitches

Primary:	7:12
----------	------

#### Wall Heights

Main:	8'-0"
Upper:	8'-0"
3rd Floor:	0'-0"
Lower:	0'-0"

#### Foundation Type

Crawl Space

#### Roof Framing

Trusses

#### Floor Load

Live (lbs):	40 PSF
Dead (lbs):	10 PSF

#### Roof Load

Live (lbs):	25 PSF
Dead (lbs):	15 PSF
Wind:	85 MPH

#### Design Features

- Bonus Space @ Upper Floor
- Den/Office
- Laundry Room @ Main Floor
- Living & Family Room
- Master Bedroom @ Main Floor Rear
- Small Plan
- View Lot - Rear