

UNIONTOWN - PLAN M2098A1F-0FB

Total Area: 2833 sq. ft.
Garage Area: 232 sq. ft.
Garage Area: 232 sq. ft.
Garage Size: 1
Stories: 3
Bedrooms: 3
Full Baths: 3
Width: 35'-0"
Depth: 36'-6"
Height: 25'-0"
Foundation: Cellar Basement



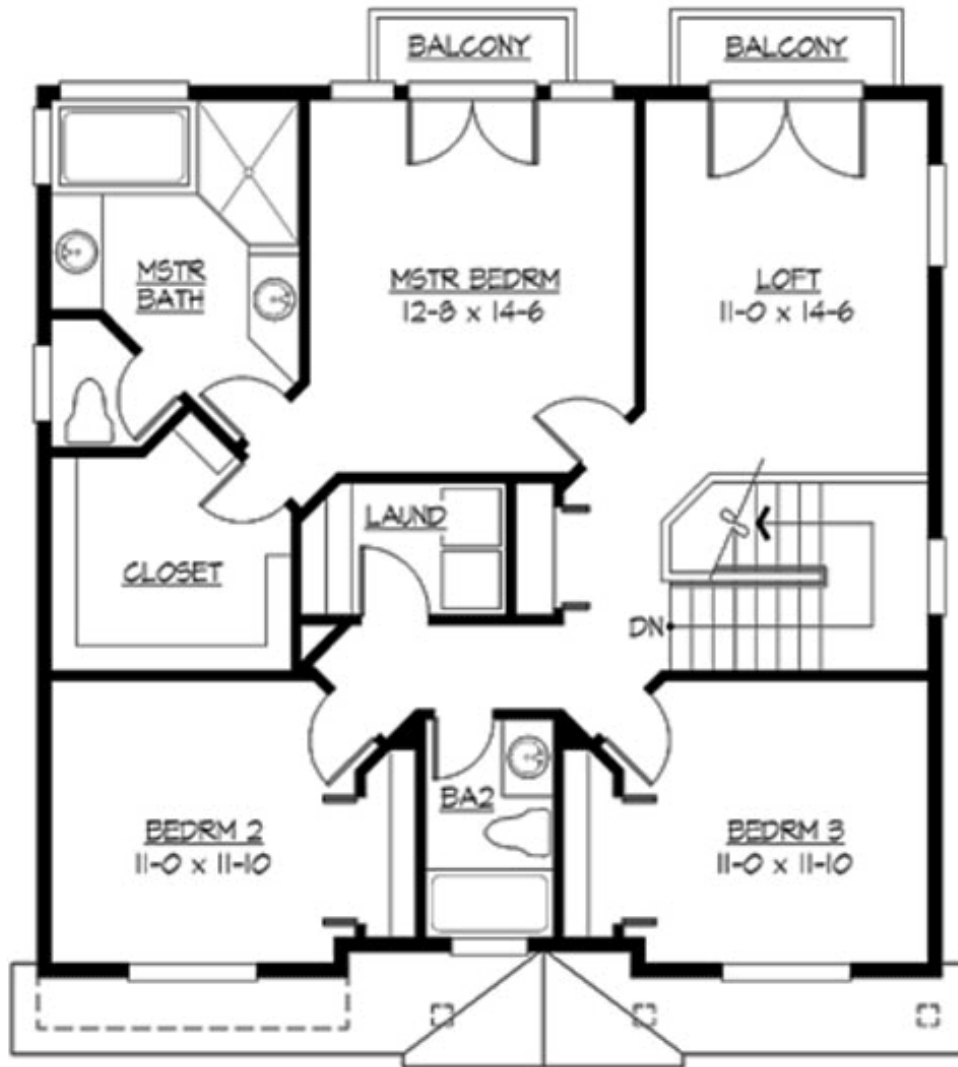
UNIONTOWN - PLAN M2098A1F-0FB

MAIN FLOOR



UNIONTOWN - PLAN M2098A1F-0FB

UPPER FLOOR



© 2012 Architects Northwest, Inc.

UNIONTOWN - PLAN M2098A1F-0FB

LOWER FLOOR



UNIONTOWN - PLAN M2098A1F-0FB

PLAN DETAILS

Area Summary

Total Area:	2833 sq. ft.
Main Floor:	977 sq. ft.
Upper Floor:	1121 sq. ft.
Lower Floor:	735 sq. ft.
Garage Floor:	232 sq. ft.

General Information

Stories:	3
Width:	35'-0"
Depth:	36'-6"
Height:	25'-0"

Architectural Style

Craftsman
Northwest
Shingle

Number of Rooms

Bedrooms:	3
Full Baths:	3

Garage

Garage Size:	1
Garage Door Location:	Front

Roof Pitches

Primary:	4:12
Secondary:	6:12

Wall Heights

Main:	10'-0"
Upper:	8'-0"
3rd Floor:	0'-0"
Lower:	8'-0"

Foundation Type

Cellar Basement

Roof Framing

Trusses

Floor Load

Live (lbs):	40 PSF
Dead (lbs):	10 PSF

Roof Load

Live (lbs):	25 PSF
Dead (lbs):	15 PSF
Wind:	85 MPH

Design Features

- Bonus Space @ Upper Floor & Lower Floor
- Den/Office
- Great Room
- Laundry Room @ Upper Floor
- Master Bedroom @ Upper Floor Rear
- Narrow Lot
- Small Plan