

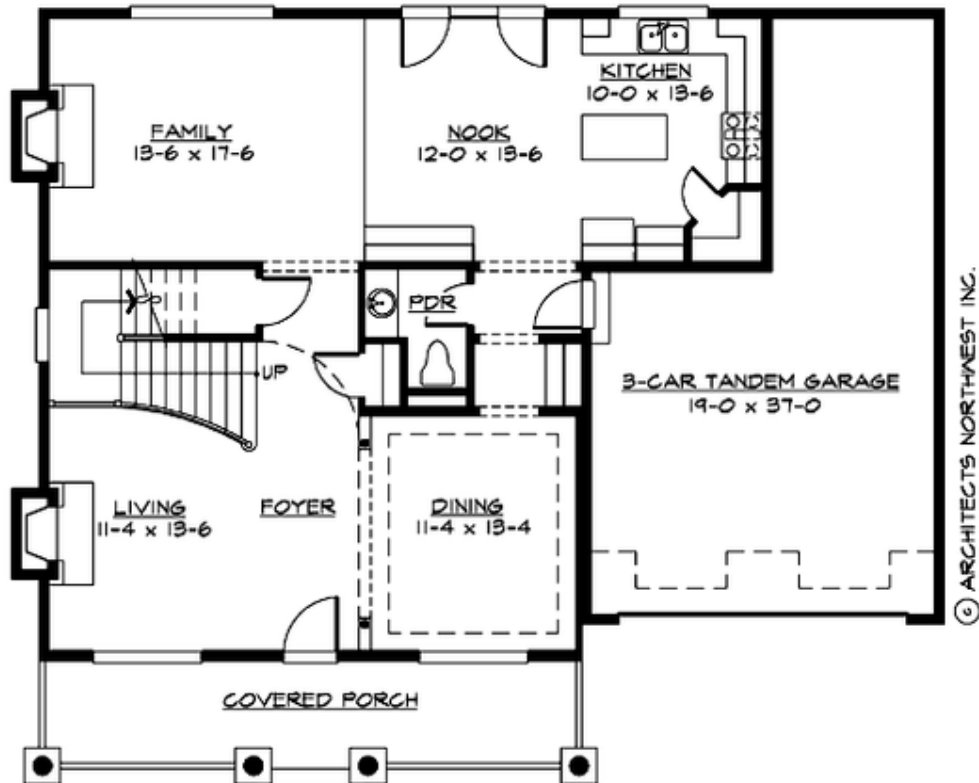
## COUNTRYSIDE - PLAN M2645B3FT-0

Total Area: 2580 sq. ft.  
Garage Area: 540 sq. ft.  
Garage Area: 540 sq. ft.  
Garage Size: 3  
Stories: 2  
Bedrooms: 4  
Full Baths: 2  
Half Baths: 1  
Width: 50'-0"  
Depth: 42'-0"  
Height: 27'-6"  
Foundation: Crawl Space



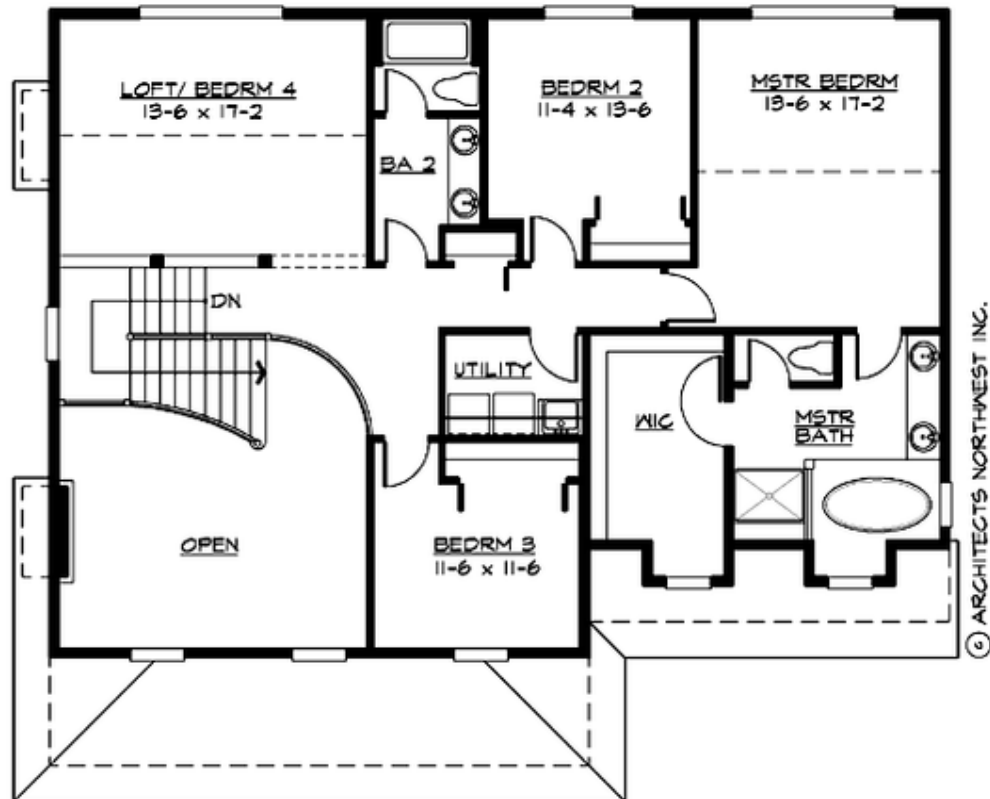
**COUNTRYSIDE - PLAN M2645B3FT-0**

**MAIN FLOOR**



**COUNTRYSIDE - PLAN M2645B3FT-0**

**UPPER FLOOR**





## COUNTRYSIDE - PLAN M2645B3FT-0

### PLAN DETAILS

#### Area Summary

Total Area: 2580 sq. ft.  
Main Floor: 1220 sq. ft.  
Upper Floor: 1360 sq. ft.  
Garage Floor: 540 sq. ft.

#### General Information

Stories: 2  
Width: 50'-0"  
Depth: 42'-0"  
Height: 27'-6"

#### Architectural Style

Country  
Farmhouse  
Traditional

#### Number of Rooms

Bedrooms: 4  
Full Baths: 2  
Half Baths: 1

#### Garage

Garage Size: 3  
Garage Door Location: Front  
Garage Type: Tandem

#### Roof Pitches

Primary: 6:12  
Secondary: 12:12

#### Wall Heights

Main: 9'-0"  
Upper: 8'-0"  
3rd Floor: 0'-0"  
Lower: 0'-0"

#### Foundation Type

Crawl Space

#### Roof Framing

Trusses

#### Floor Load

Live (lbs): 40 PSF  
Dead (lbs): 10 PSF

#### Roof Load

Live (lbs): 25 PSF  
Dead (lbs): 15 PSF  
Wind: 85 MPH

#### Design Features

- Bonus Space @ Upper Floor
- Front Porch
- Laundry Room @ Upper Floor
- Living & Family Room
- Master Bedroom @ Upper Floor Rear
- Narrow Lot
- Small Plan