

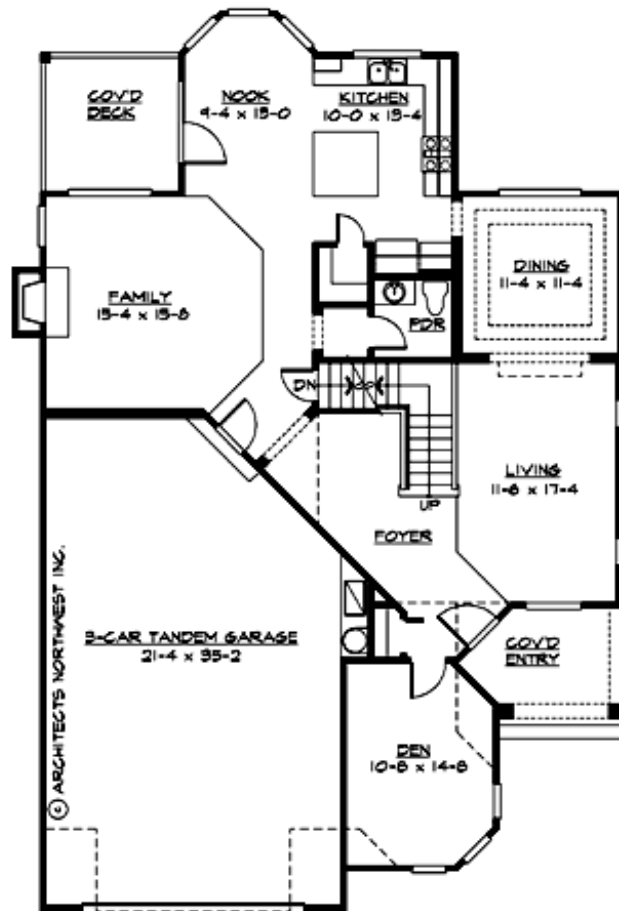
## ASPEN MEADOW PARK - PLAN M2780A3FT-13DB

Total Area: 4369 sq. ft.  
Garage Area: 744 sq. ft.  
Garage Area: 744 sq. ft.  
Garage Size: 3  
Stories: 3  
Bedrooms: 3  
Full Baths: 3  
Half Baths: 1  
Width: 42'-0"  
Depth: 65'-0"  
Height: 28'-6"  
Foundation: Daylight Basement



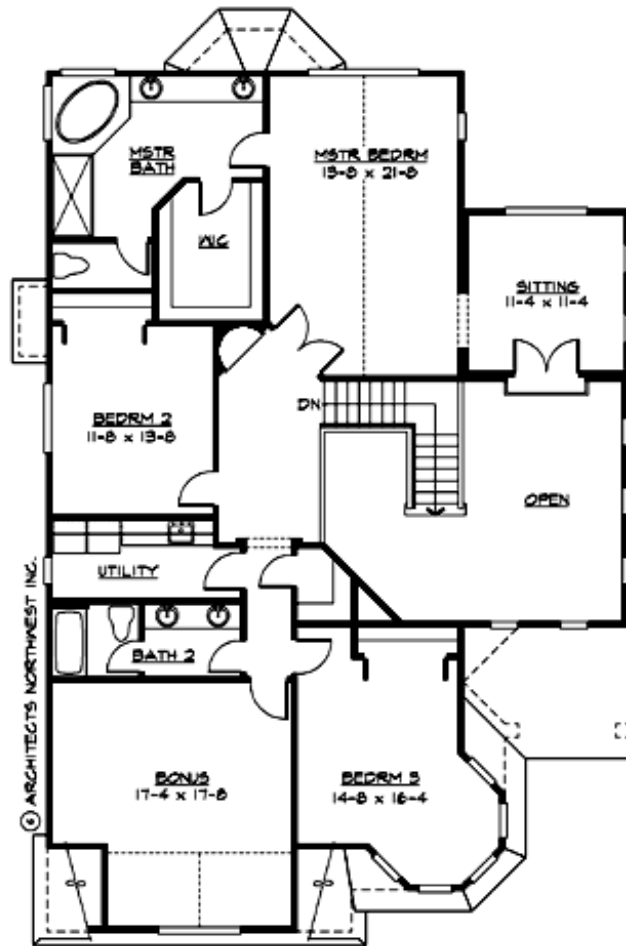
## ASPEN MEADOW PARK - PLAN M2780A3FT-13DB

### MAIN FLOOR



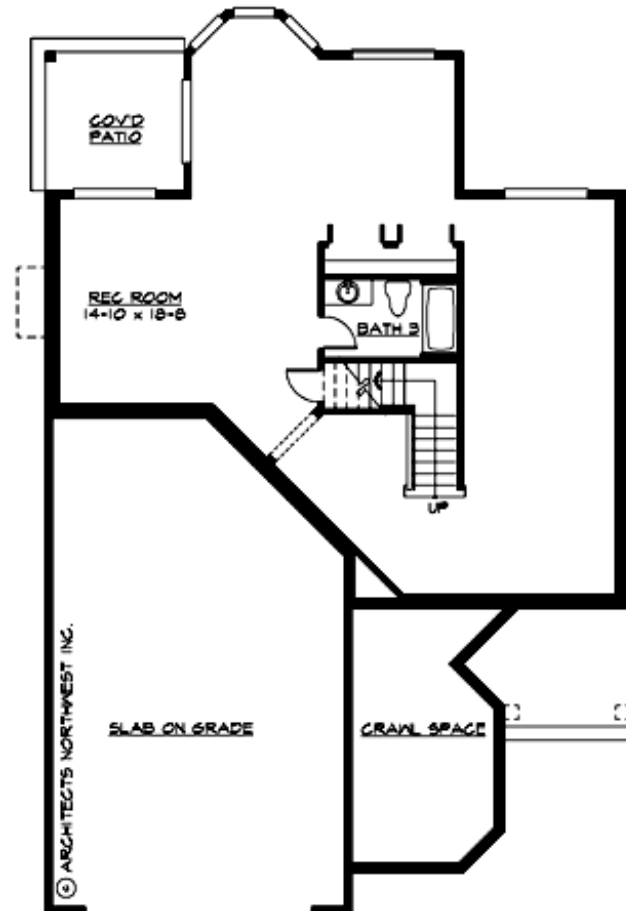
## ASPEN MEADOW PARK - PLAN M2780A3FT-13DB

### UPPER FLOOR



## ASPEN MEADOW PARK - PLAN M2780A3FT-13DB

### LOWER FLOOR





## ASPEN MEADOW PARK - PLAN M2780A3FT-13DB

### PLAN DETAILS

#### Area Summary

Total Area: 4369 sq. ft.  
Main Floor: 1416 sq. ft.  
Upper Floor: 1786 sq. ft.  
Lower Floor: 1167 sq. ft.  
Garage Floor: 744 sq. ft.

#### General Information

Stories: 3  
Width: 42'-0"  
Depth: 65'-0"  
Height: 28'-6"

#### Architectural Style

Cape Cod  
Hampton  
Shingle

#### Number of Rooms

Bedrooms: 3  
Full Baths: 3  
Half Baths: 1

#### Garage

Garage Size: 3  
Garage Door Location: Front  
Garage Type: Tandem

#### Roof Pitches

Primary: 8:12  
Secondary: 4:12

#### Wall Heights

Main: 9'-0"  
Upper: 8'-0"  
3rd Floor: 0'-0"  
Lower: 9'-0"

#### Foundation Type

Daylight Basement

#### Roof Framing

Trusses

#### Floor Load

Live (lbs): 40 PSF  
Dead (lbs): 10 PSF

#### Roof Load

Live (lbs): 25 PSF  
Dead (lbs): 15 PSF  
Wind: 85 MPH

#### Design Features

- Bonus Space @ Upper Floor & Lower Floor
- Laundry Room @ Upper Floor
- Living & Family Room
- Master Bedroom @ Upper Floor Rear
- Narrow Lot
- Rear Porch