

## COLUMBIA MEADOWS - PLAN M2805A3F-0

Total Area: 3035 sq. ft.  
Garage Area: 600 sq. ft.  
Garage Area: 600 sq. ft.  
Garage Size: 3  
Stories: 2  
Bedrooms: 3  
Full Baths: 2  
Half Baths: 1  
Width: 62'-0"  
Depth: 62'-0"  
Height: 27'-0"  
Foundation: Crawl Space

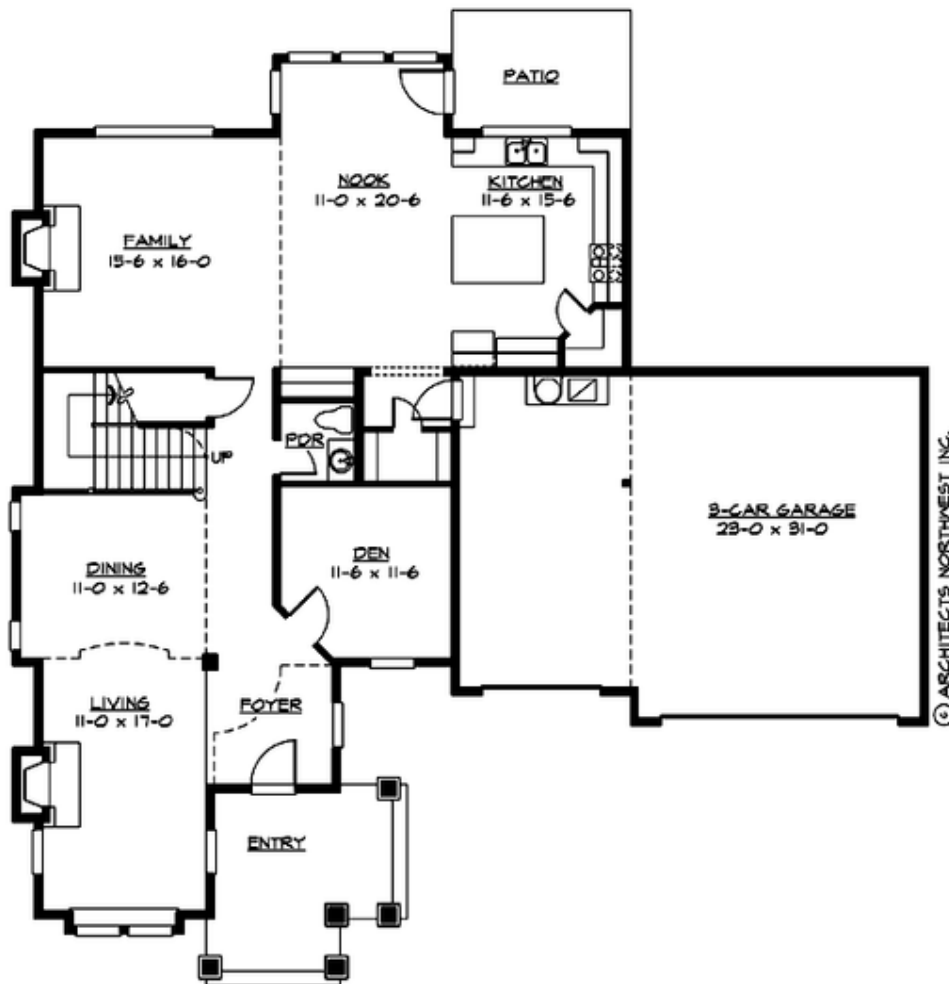


### ***Rustic Entry Tower Anchors Bold Craftsman Design.***

The Columbia Meadow's unique entry tower is a landmark element that sets this home apart from the ordinary. A two-story volume dining room, open stairwell and dramatic Juliet balcony overlook combine to create spectacular interior spaces filled with daylight. The main floor includes dramatic formal rooms, a large informal family living areas and a work-at-home den, while the upstairs features a private master suite with his-and-hers walk-in closets, three secondary bedrooms, a compartmented bath and a convenient laundry.

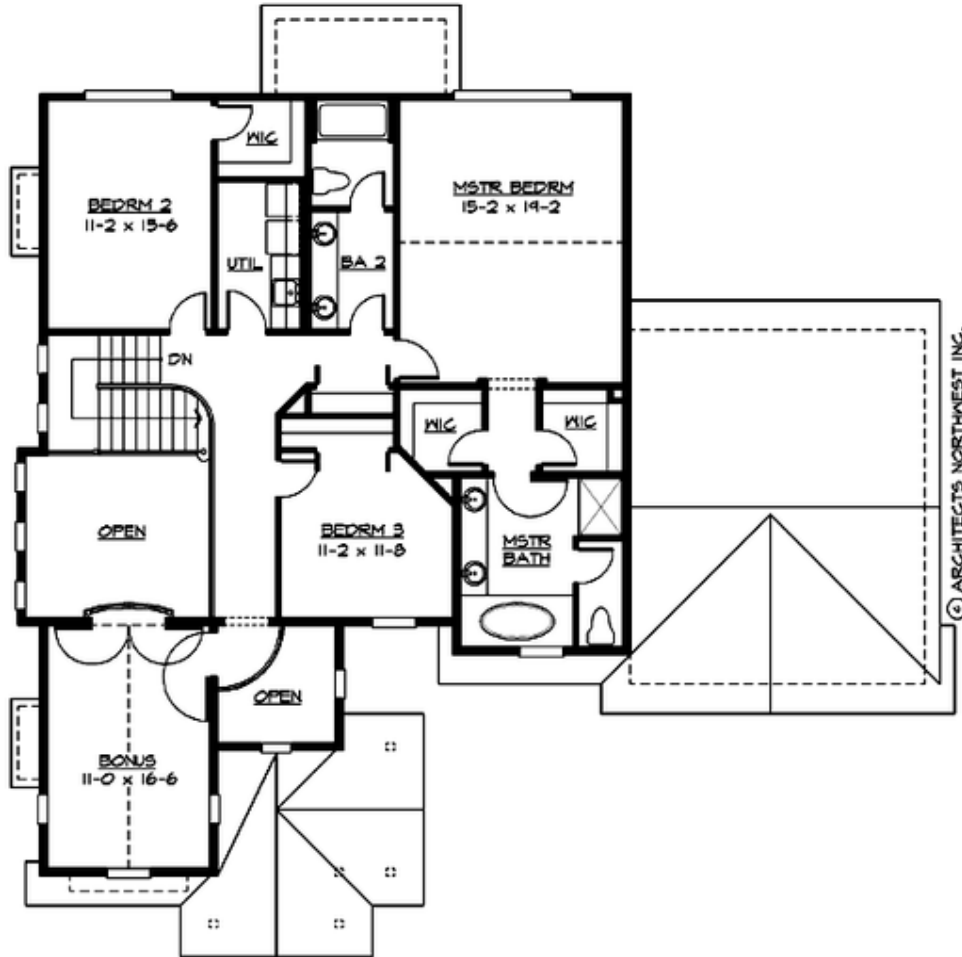
**COLUMBIA MEADOWS - PLAN M2805A3F-0**

**MAIN FLOOR**



**COLUMBIA MEADOWS - PLAN M2805A3F-0**

**UPPER FLOOR**





## COLUMBIA MEADOWS - PLAN M2805A3F-0

### PLAN DETAILS

#### Area Summary

Total Area: 3035 sq. ft.  
Main Floor: 1553 sq. ft.  
Upper Floor: 1482 sq. ft.  
Garage Floor: 600 sq. ft.

#### General Information

Stories: 2  
Width: 62'-0"  
Depth: 62'-0"  
Height: 27'-0"

#### Architectural Style

Craftsman  
Lodge  
Shingle

#### Number of Rooms

Bedrooms: 3  
Full Baths: 2  
Half Baths: 1

#### Garage

Garage Size: 3  
Garage Door Location: Front

#### Roof Pitches

Primary: 6:12

#### Wall Heights

Main: 9'-0"  
Upper: 8'-0"  
3rd Floor: 0'-0"  
Lower: 0'-0"

#### Foundation Type

Crawl Space

#### Roof Framing

Trusses

#### Floor Load

Live (lbs): 40 PSF  
Dead (lbs): 10 PSF

#### Roof Load

Live (lbs): 25 PSF  
Dead (lbs): 15 PSF  
Wind: 85 MPH

#### Design Features

- Bonus Space @ Upper Floor
- Den/Office
- Laundry Room @ Upper Floor
- Living & Family Room
- Master Bedroom @ Upper Floor Rear
- Narrow Lot
- Small Plan