

## HAVENHAWK - PLAN M6800A3S-0DB

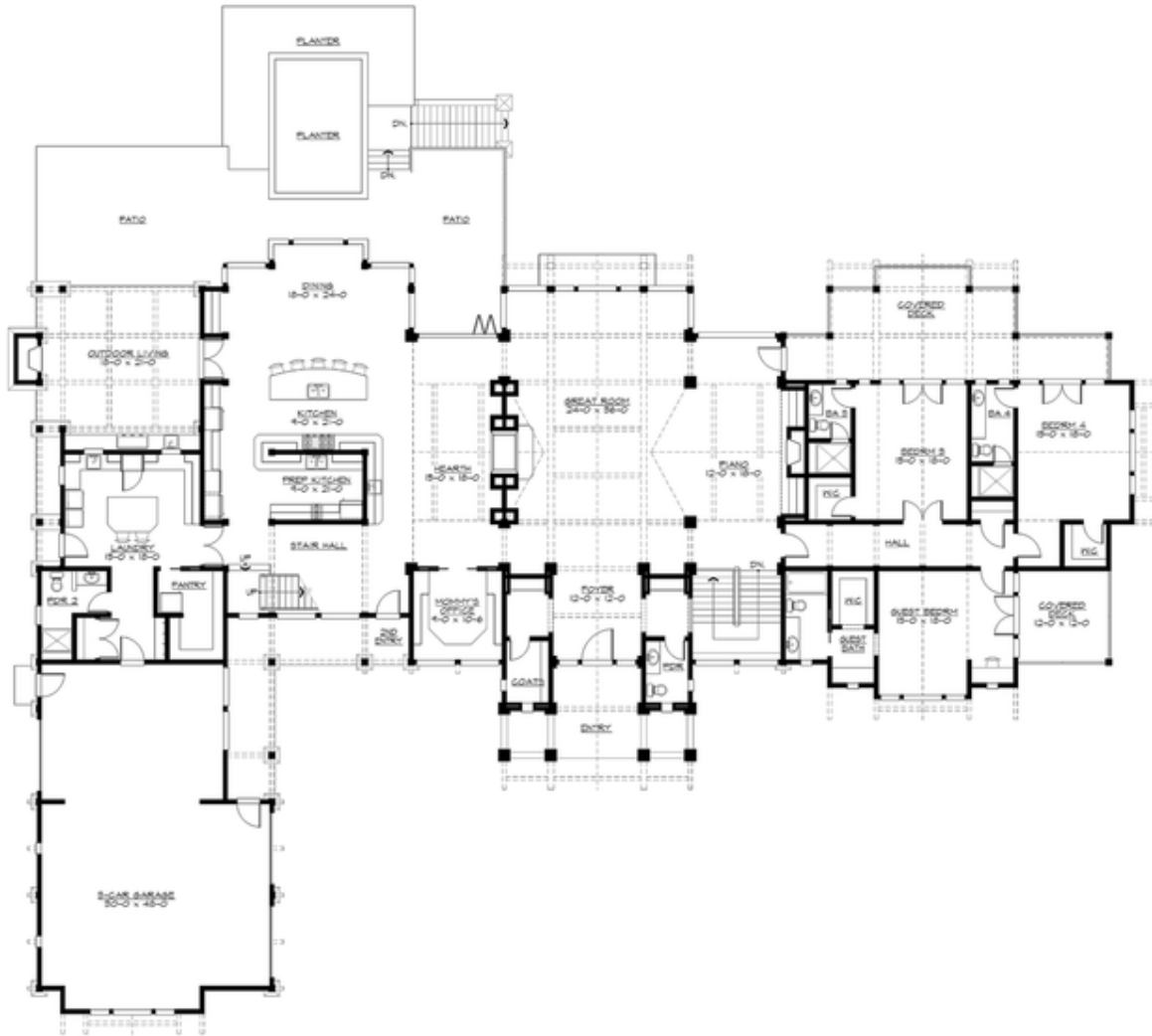
Total Area: 9870 sq. ft.  
 Garage Area: 1205 sq. ft.  
 Garage Area: 1205 sq. ft.  
 Garage Size: 3  
 Stories: 3  
 Bedrooms: 4  
 Full Baths: 6  
 Half Baths: 1  
 Width: 144'-0"  
 Depth: 100'-0"  
 Height: 32'-0"  
 Foundation: Daylight Basement



***A Magnificent Lodge Crafted of Timber and Glass.*** A spectacular estate designed for a waterfront view lot, the Havenhawk has been carefully designed to provide a luxurious expression of an active family lifestyle. Its solid stone foundation, heavy timber structure, and elegant, sweeping rooflines evoke feelings of strength and serenity. The plan is organized around impressive spatial volumes and grand views, but always with attention to creating warmth and intimacy for its residents. The main entry centers on the spectacular vaulted great room, with its massive see-through fireplace and piano bay. The far end of the main floor holds a guest suite with private deck and two secondary bedrooms with en suite baths, walk-in closets and covered view decks. Opposite the great room lie the intimate hearth room, grand chef's kitchen and prep kitchen, family dining room, covered outdoor living/BBQ porch, island laundry, walk-in pantry, and a 3-car garage that will make your sports cars purr. A private stairway leads upstairs, an aerie fully occupied by the grand master suite, with coffee bar, covered view deck, luxury five-fixtured bath, and decadent walk-in closet and dressing room. The walk-out basement contains work and play spaces, including a grand recreation room, exercise room, conference room, office, wine cellar, storage and mechanical space, covered decks, patios and terraces. Befitting a house designed for an active waterfront lifestyle, the lower level also provides a mud room, dressing room and covered parking for recreational ATVs and watercraft. The Havenhawk is a tour de force of naturally elegant and luxurious design, providing supreme comfort, convenience and beauty for its proud owners.

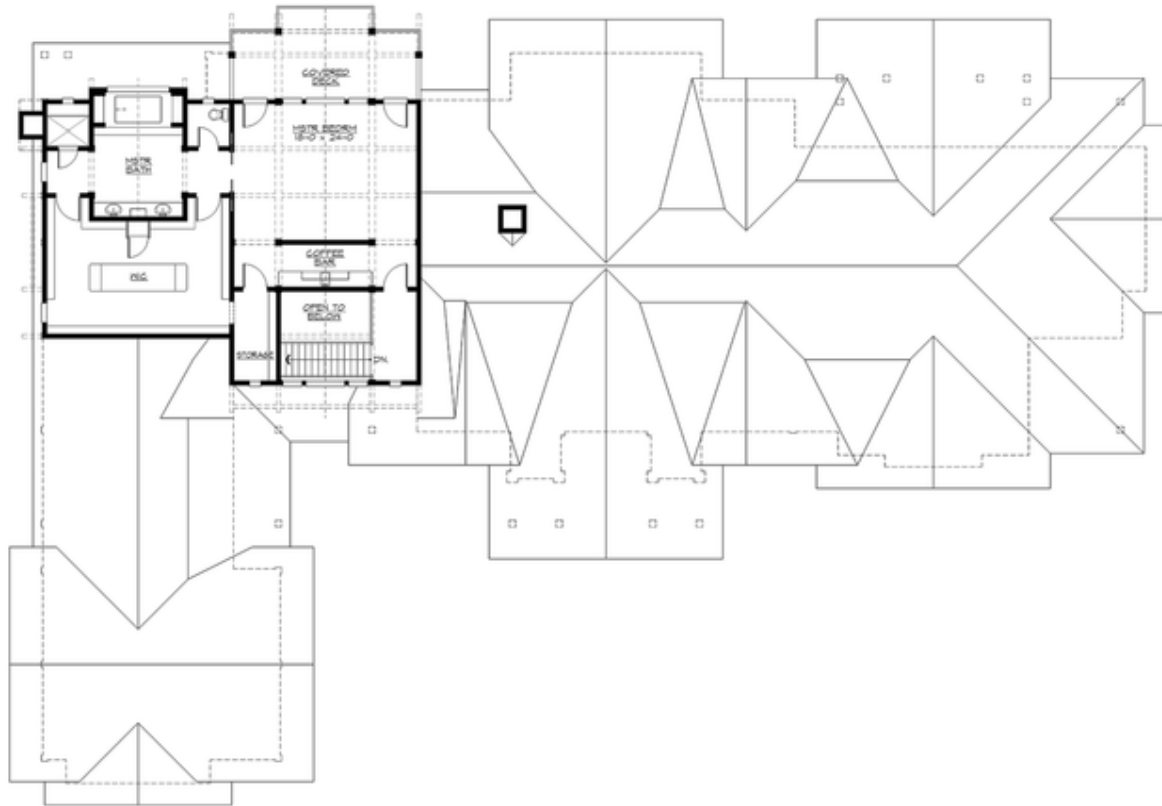
**HAVENHAWK - PLAN M6800A3S-0DB**

**MAIN FLOOR**



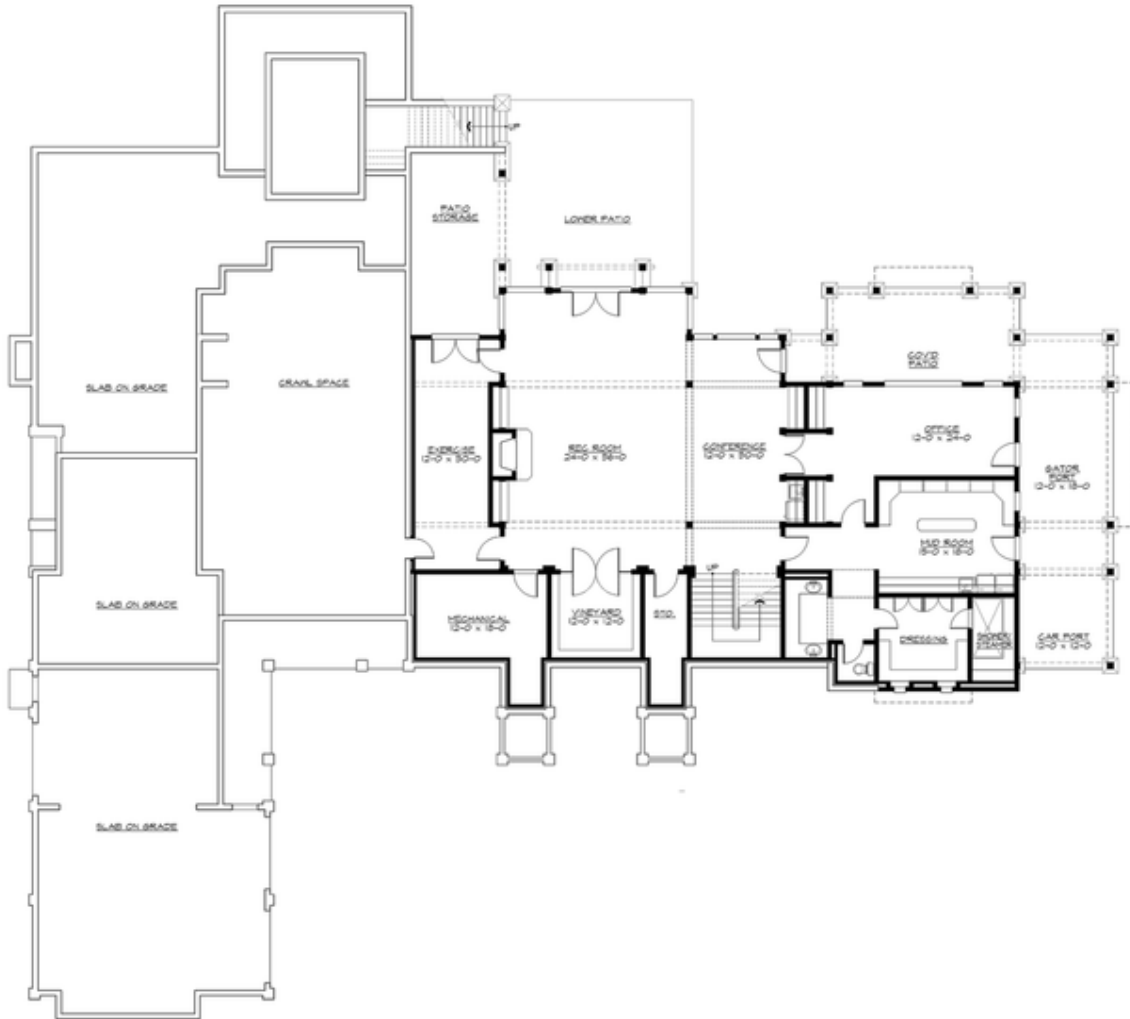
**HAVENHAWK - PLAN M6800A3S-0DB**

**UPPER FLOOR**



**HAVENHAWK - PLAN M6800A3S-0DB**

**LOWER FLOOR**





## HAVENHAWK - PLAN M6800A3S-0DB

### PLAN DETAILS

#### Area Summary

Total Area:	9870 sq. ft.
Main Floor:	5350 sq. ft.
Upper Floor:	1450 sq. ft.
Lower Floor:	3070 sq. ft.
Garage Floor:	1205 sq. ft.

#### General Information

Stories:	3
Width:	144'-0"
Depth:	100'-0"
Height:	32'-0"

#### Architectural Style

Craftsman  
Lodge  
Northwest

#### Number of Rooms

Bedrooms:	4
Full Baths:	6
Half Baths:	1

#### Garage

Garage Size:	3
Garage Door Location:	Side

#### Roof Pitches

Primary:	8:12
----------	------

#### Wall Heights

Main:	10'-0"
Upper:	9'-0"
3rd Floor:	0'-0"
Lower:	10'-0"

#### Foundation Type

Daylight Basement

#### Roof Framing

Combination

#### Floor Load

Live (lbs):	40 PSF
Dead (lbs):	10 PSF

#### Roof Load

Live (lbs):	25 PSF
Dead (lbs):	15 PSF
Wind:	85 MPH

#### Design Features

- Bonus Space @ Lower Floor
- Den/Office
- Great Room
- Laundry Room @ Main Floor
- Luxury Plan
- Master Bedroom @ Upper Floor  
Rear
- Rear Porch