

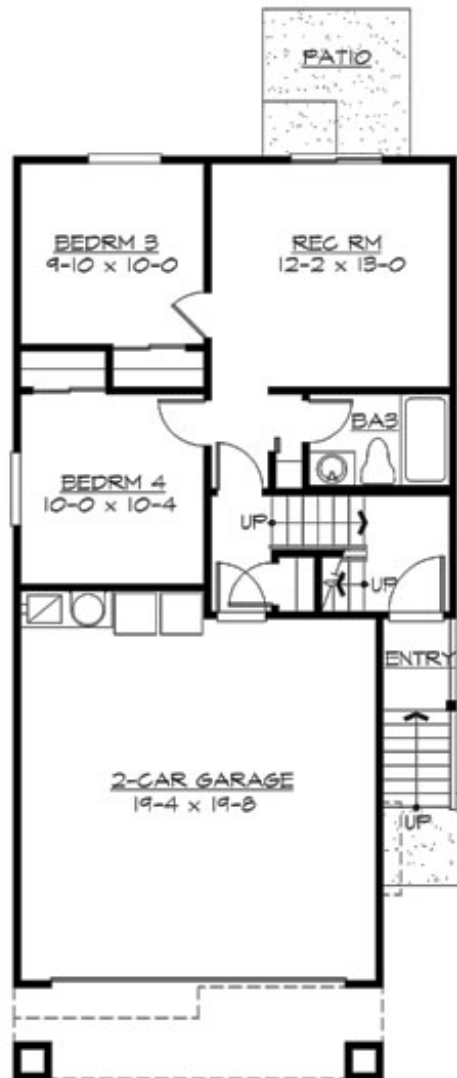
## MAYVILLE - PLAN S1605A2F-0

Total Area: 1605 sq. ft.  
Garage Area: 415 sq. ft.  
Garage Area: 415 sq. ft.  
Garage Size: 2  
Stories: 2  
Bedrooms: 4  
Full Baths: 3  
Width: 24'-0"  
Depth: 50'-0"  
Height: 23'-6"  
Foundation: Slab On Grade



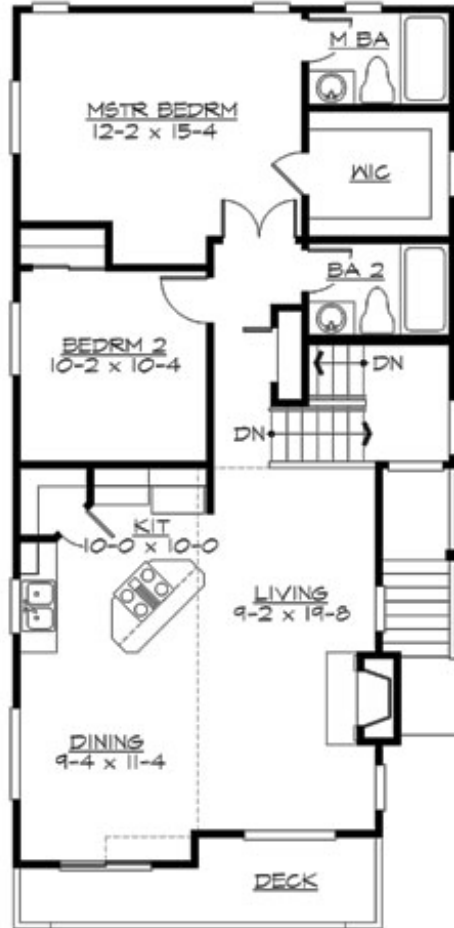
## MAYVILLE - PLAN S1605A2F-0

### MAIN FLOOR



## MAYVILLE - PLAN S1605A2F-0

### UPPER FLOOR



© 2005 Architects Northwest, Inc. All Rights Reserved.

S1605A2F-0

## MAYVILLE - PLAN S1605A2F-0

### PLAN DETAILS

#### Area Summary

Total Area: 1605 sq. ft.  
Main Floor: 1020 sq. ft.  
Lower Floor: 585 sq. ft.  
Garage Floor: 415 sq. ft.

#### General Information

Stories: 2  
Width: 24'-0"  
Depth: 50'-0"  
Height: 23'-6"

#### Architectural Style

Northwest  
Ranch  
Shotgun

#### Number of Rooms

Bedrooms: 4  
Full Baths: 3

#### Garage

Garage Size: 2  
Garage Door Location: Front

#### Roof Pitches

Primary: 6:12

#### Wall Heights

Main: 8'-0"  
Upper: 0'-0"  
3rd Floor: 0'-0"  
Lower: 8'-0"

#### Foundation Type

Slab On Grade

#### Roof Framing

Trusses

#### Floor Load

Live (lbs): 40 PSF  
Dead (lbs): 10 PSF

#### Roof Load

Live (lbs): 25 PSF  
Dead (lbs): 15 PSF  
Wind: 85 MPH

#### Design Features

- Affordable Plan
- Bonus Space @ Lower Floor
- Living & Family Room
- Master Bedroom @ Main Floor Rear
- Narrow Lot