

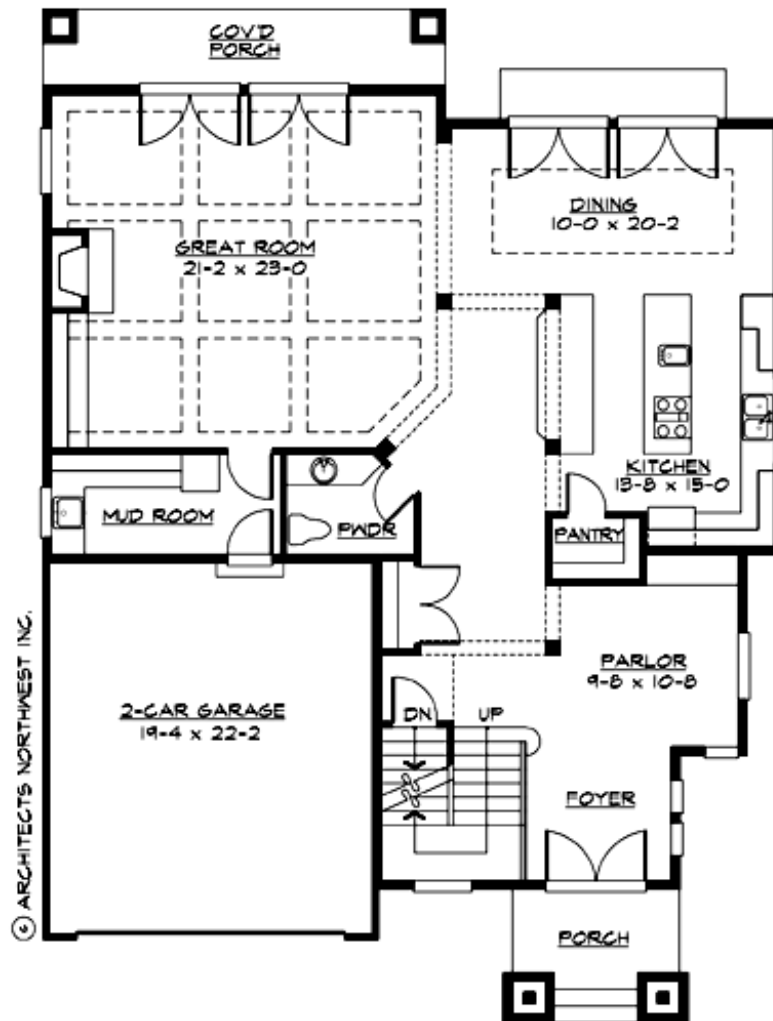
## RIDGECREEK - PLAN M3284A2F-0FB

Total Area: 5201 sq. ft.  
Garage Area: 462 sq. ft.  
Garage Area: 462 sq. ft.  
Garage Size: 2  
Stories: 3  
Bedrooms: 5  
Full Baths: 3  
Half Baths: 1  
Width: 44'-0"  
Depth: 61'-0"  
Height: 25'-0"  
Foundation: Cellar Basement



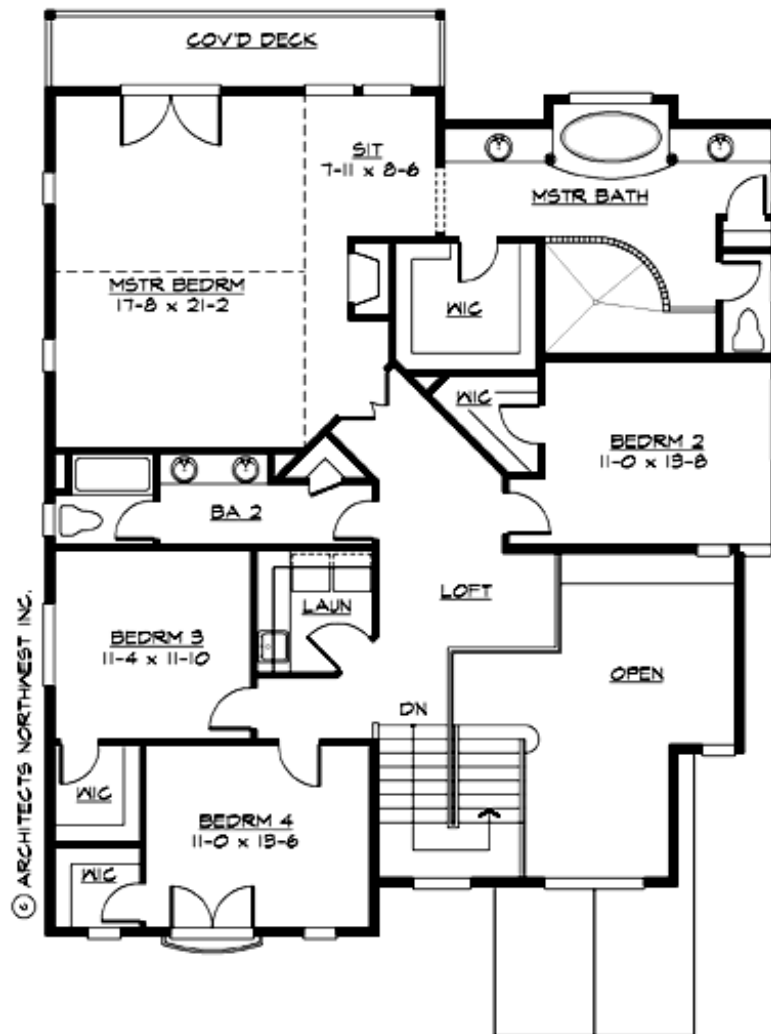
## RIDGECREEK - PLAN M3284A2F-0FB

### MAIN FLOOR



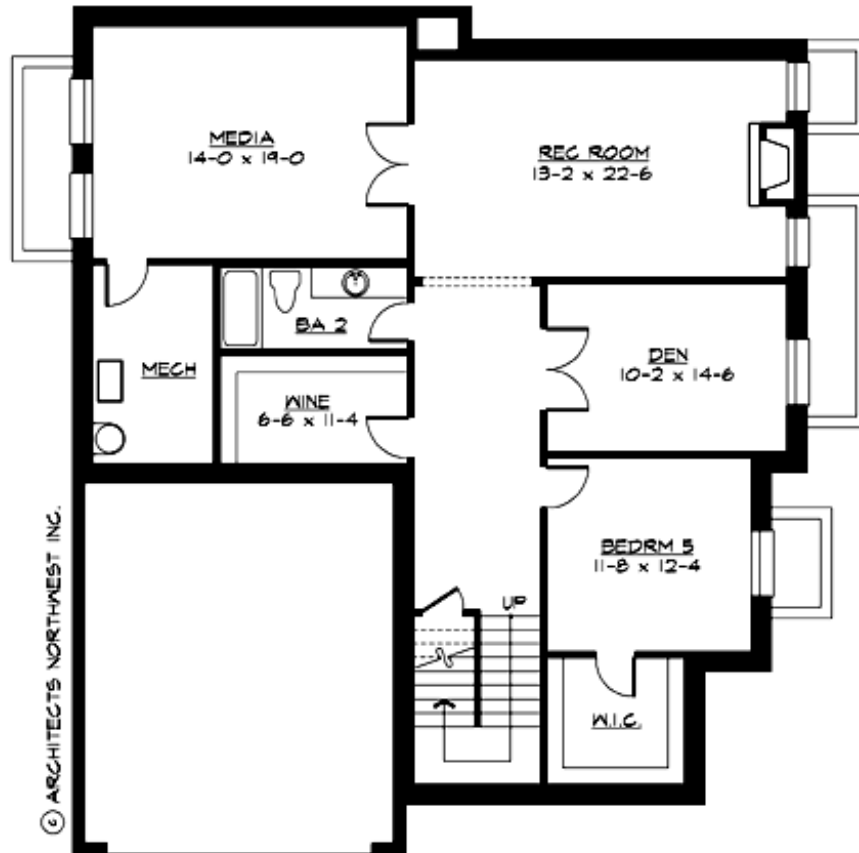
## RIDGECREEK - PLAN M3284A2F-0FB

### UPPER FLOOR



## RIDGECREEK - PLAN M3284A2F-0FB

### LOWER FLOOR



## RIDGECREEK - PLAN M3284A2F-0FB

### PLAN DETAILS

#### Area Summary

Total Area: 5201 sq. ft.  
Main Floor: 1621 sq. ft.  
Upper Floor: 2076 sq. ft.  
Lower Floor: 1504 sq. ft.  
Garage Floor: 462 sq. ft.

#### General Information

Stories: 3  
Width: 44'-0"  
Depth: 61'-0"  
Height: 25'-0"

#### Architectural Style

Craftsman  
Lodge  
Shingle

#### Number of Rooms

Bedrooms: 5  
Full Baths: 3  
Half Baths: 1

#### Garage

Garage Size: 2  
Garage Door Location: Front

#### Roof Pitches

Primary: 6:12

#### Wall Heights

Main: 9'-0"  
Upper: 8'-0"  
3rd Floor: 0'-0"  
Lower: 10'-0"

#### Foundation Type

Cellar Basement

#### Roof Framing

Combination

#### Floor Load

Live (lbs): 40 PSF  
Dead (lbs): 10 PSF

#### Roof Load

Live (lbs): 25 PSF  
Dead (lbs): 15 PSF  
Wind: 85 MPH

#### Design Features

- Bonus Space @ Lower Floor
- Den/Office
- Great Room
- Laundry Room @ Main & Upper Floor
- Master Bedroom @ Upper Floor Rear
- Narrow Lot
- Rear Porch
- View Lot - Rear