

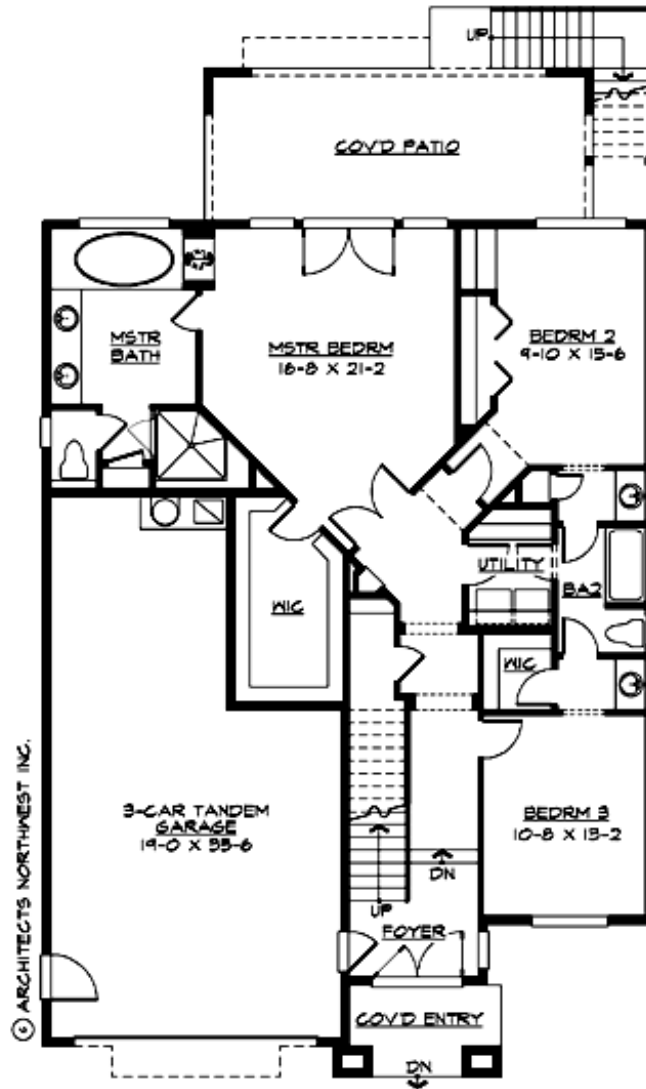
## THORNTON - PLAN M3351A3FT-0

Total Area: 3349 sq. ft.  
Garage Area: 599 sq. ft.  
Garage Area: 599 sq. ft.  
Garage Size: 3  
Stories: 2  
Bedrooms: 4  
Full Baths: 3  
Width: 40'-0"  
Depth: 66'-0"  
Height: 24'-6"  
Foundation: Crawl Space



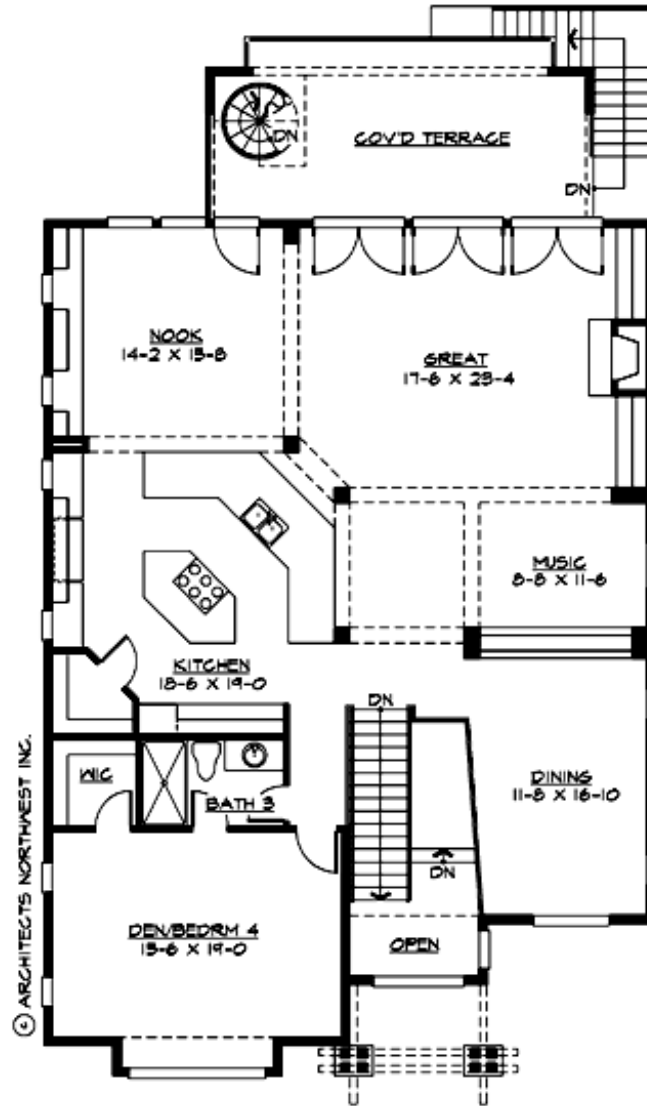
## THORNTON - PLAN M3351A3FT-0

### MAIN FLOOR



## THORNTON - PLAN M3351A3FT-0

### UPPER FLOOR





## THORNTON - PLAN M3351A3FT-0

### PLAN DETAILS

#### Area Summary

Total Area: 3349 sq. ft.  
Main Floor: 1437 sq. ft.  
Upper Floor: 1912 sq. ft.  
Garage Floor: 599 sq. ft.

#### General Information

Stories: 2  
Width: 40'-0"  
Depth: 66'-0"  
Height: 24'-6"

#### Architectural Style

Bungalow  
Craftsman  
Northwest

#### Number of Rooms

Bedrooms: 4  
Full Baths: 3

#### Garage

Garage Size: 3  
Garage Door Location: Front  
Garage Type: Tandem

#### Roof Pitches

Primary: 3:12

#### Wall Heights

Main: 10'-0"  
Upper: 10'-0"  
3rd Floor: 0'-0"  
Lower: 0'-0"

#### Foundation Type

Crawl Space

#### Roof Framing

Trusses

#### Floor Load

Live (lbs): 40 PSF  
Dead (lbs): 10 PSF

#### Roof Load

Live (lbs): 25 PSF  
Dead (lbs): 15 PSF  
Wind: 85 MPH

#### Design Features

- Den/Office
- Great Room
- Laundry Room @ Main Floor
- Master Bedroom @ Main Floor Rear
- Narrow Lot
- Rear Porch
- View Lot - Rear