

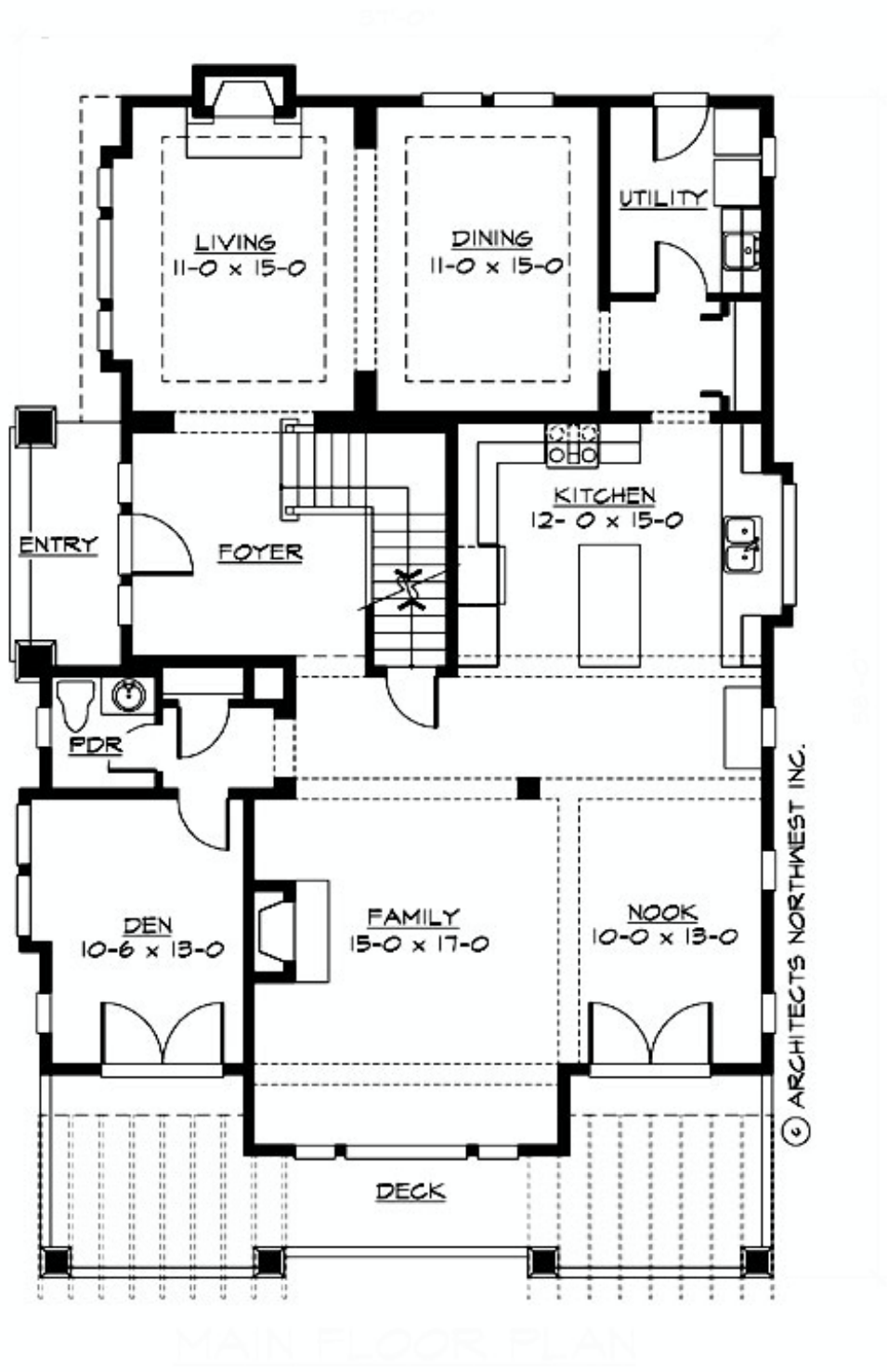
## BLACKCOMB - PLAN M3375A3SU-0

Total Area: 3375 sq. ft.  
Garage Area: 966 sq. ft.  
Garage Area: 966 sq. ft.  
Garage Size: 3  
Stories: 3  
Bedrooms: 3  
Full Baths: 2  
Half Baths: 1  
Width: 37'-0"  
Depth: 58'-0"  
Height: 24'-0"  
Foundation: Crawl Space



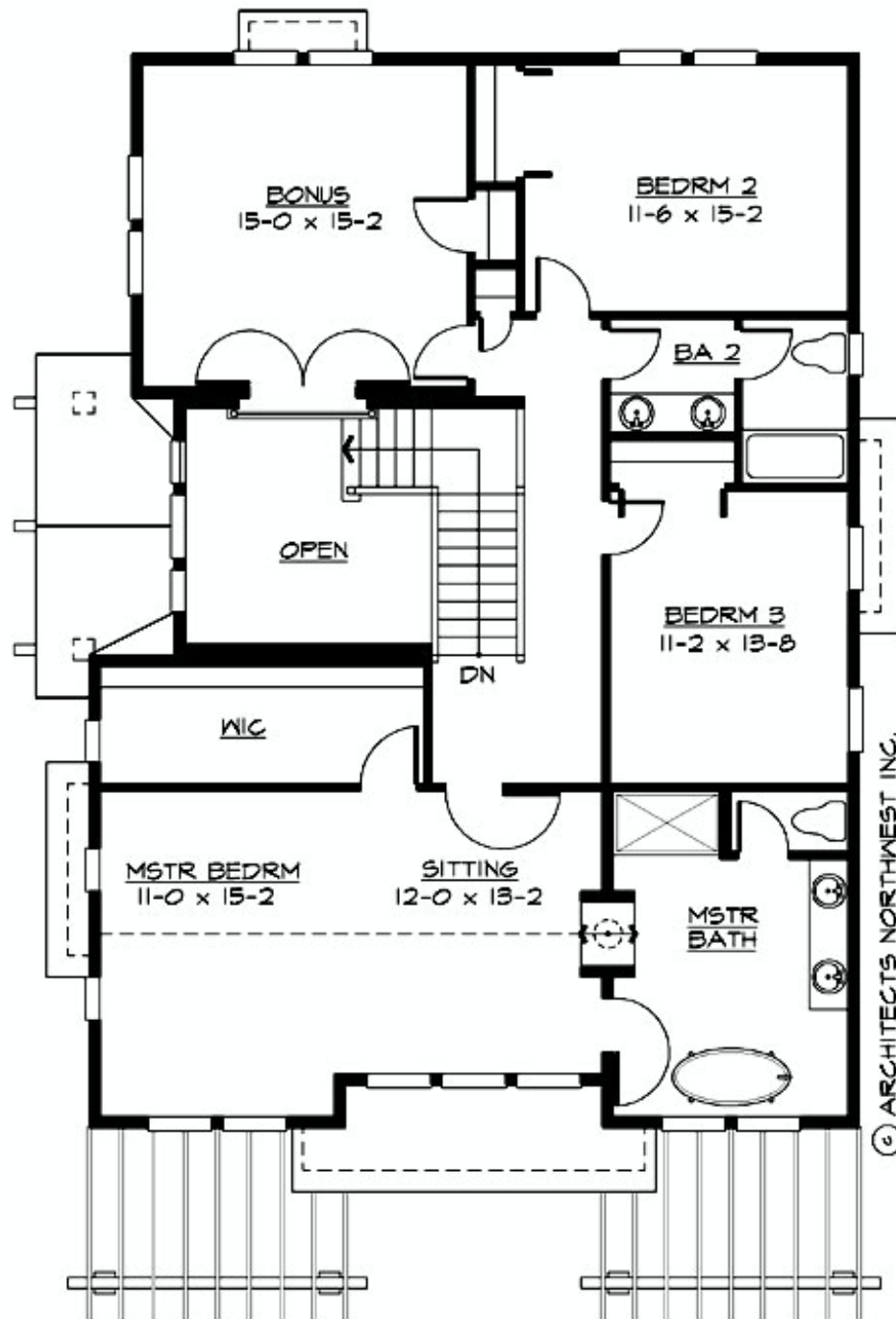
**BLACKCOMB - PLAN M3375A3SU-0**

**MAIN FLOOR**



## BLACKCOMB - PLAN M3375A3SU-0

### UPPER FLOOR

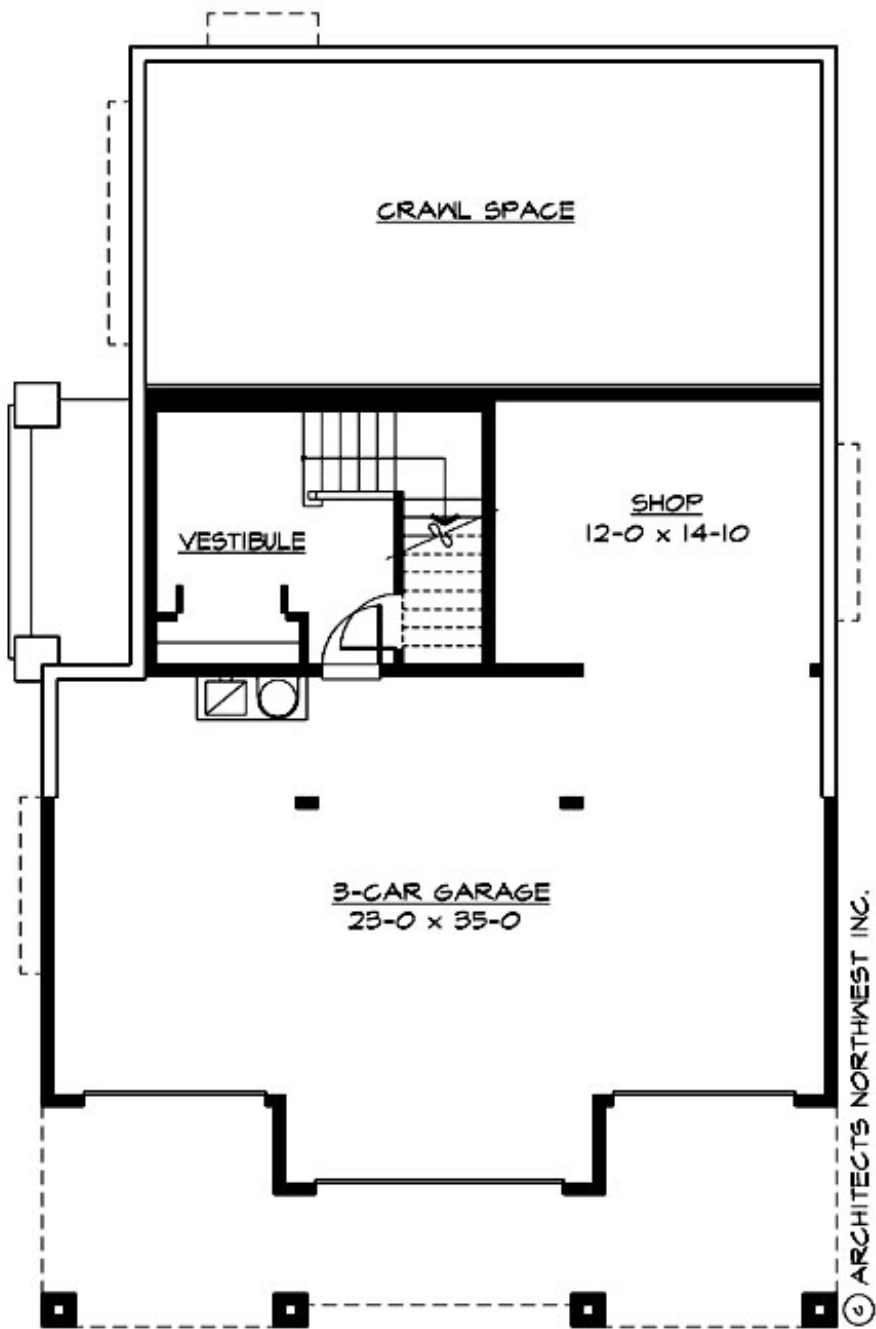


© ARCHITECTS NORTHWEST INC.

UPPER FLOOR PLAN

**BLACKCOMB - PLAN M3375A3SU-0**

**LOWER FLOOR**



LOWER FLOOR PLAN



## BLACKCOMB - PLAN M3375A3SU-0

### PLAN DETAILS

#### Area Summary

Total Area: 3375 sq. ft.  
Main Floor: 1685 sq. ft.  
Upper Floor: 1490 sq. ft.  
Garage Floor: 966 sq. ft.

#### General Information

Stories: 3  
Width: 37'-0"  
Depth: 58'-0"  
Height: 24'-0"

#### Architectural Style

Craftsman  
Lodge  
Shingle

#### Number of Rooms

Bedrooms: 3  
Full Baths: 2  
Half Baths: 1

#### Garage

Garage Size: 3  
Garage Door Location: Side  
Garage Type: Under

#### Roof Pitches

Primary: 6:12  
Secondary: 4:12

#### Wall Heights

Main: 9'-0"  
Upper: 8'-0"  
3rd Floor: 0'-0"  
Lower: 9'-0"

#### Foundation Type

Crawl Space

#### Roof Framing

Trusses

#### Floor Load

Live (lbs): 40 PSF  
Dead (lbs): 10 PSF

#### Roof Load

Live (lbs): 25 PSF  
Dead (lbs): 15 PSF  
Wind: 85 MPH

#### Design Features

- Bonus Space @ Upper Floor
- Den/Office
- Front Porch
- Laundry Room @ Main Floor
- Living & Family Room
- Master Bedroom @ Upper Floor Front