

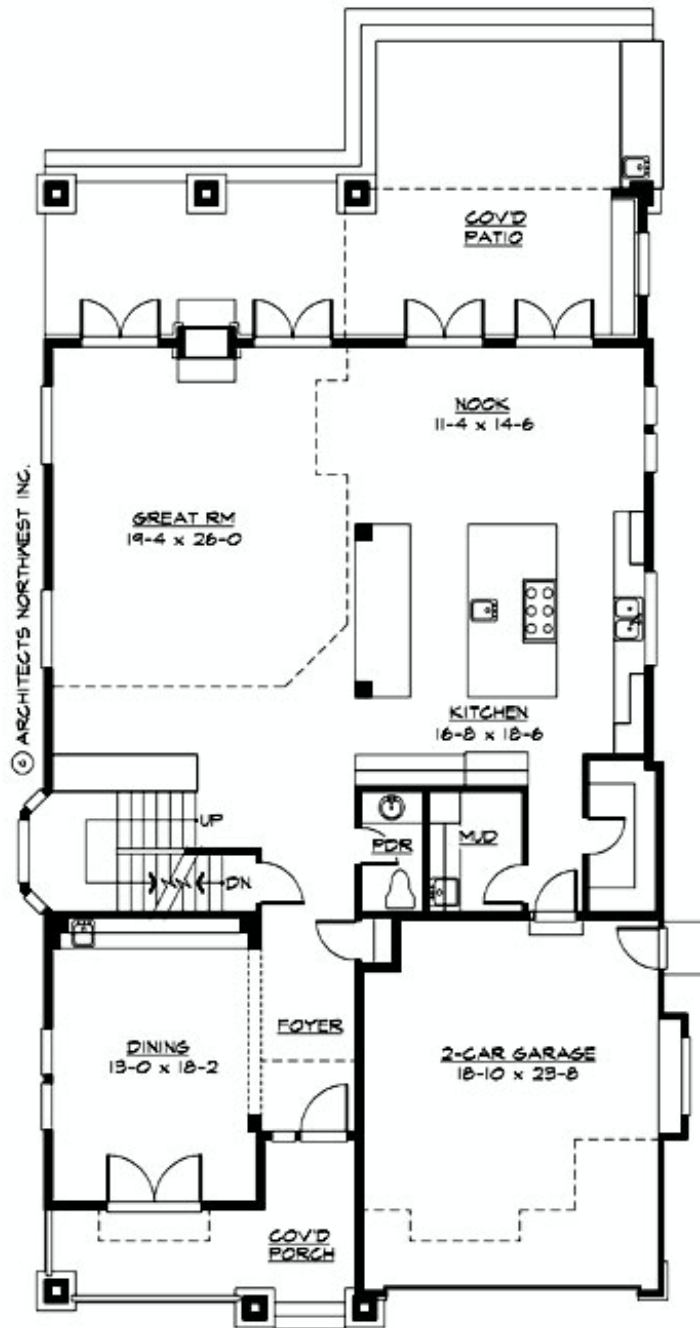
ALSTON PARK - PLAN M3452A2F-0FB

Total Area: 4911 sq. ft.
Garage Area: 457 sq. ft.
Garage Area: 457 sq. ft.
Garage Size: 2
Stories: 3
Bedrooms: 4
Full Baths: 4
Half Baths: 1
Width: 40'-0"
Depth: 82'-0"
Height: 23'-6"
Foundation: Cellar Basement



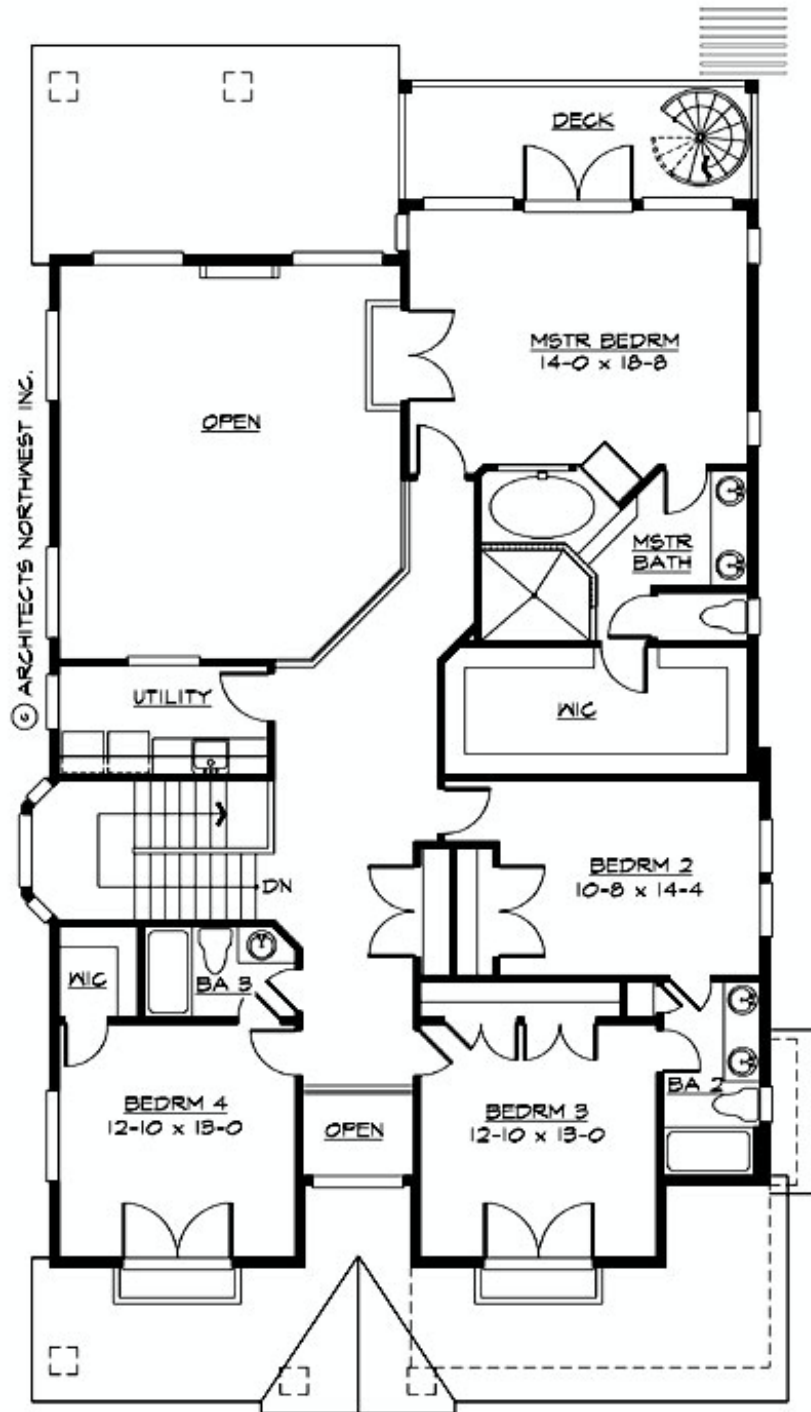
ALSTON PARK - PLAN M3452A2F-0FB

MAIN FLOOR



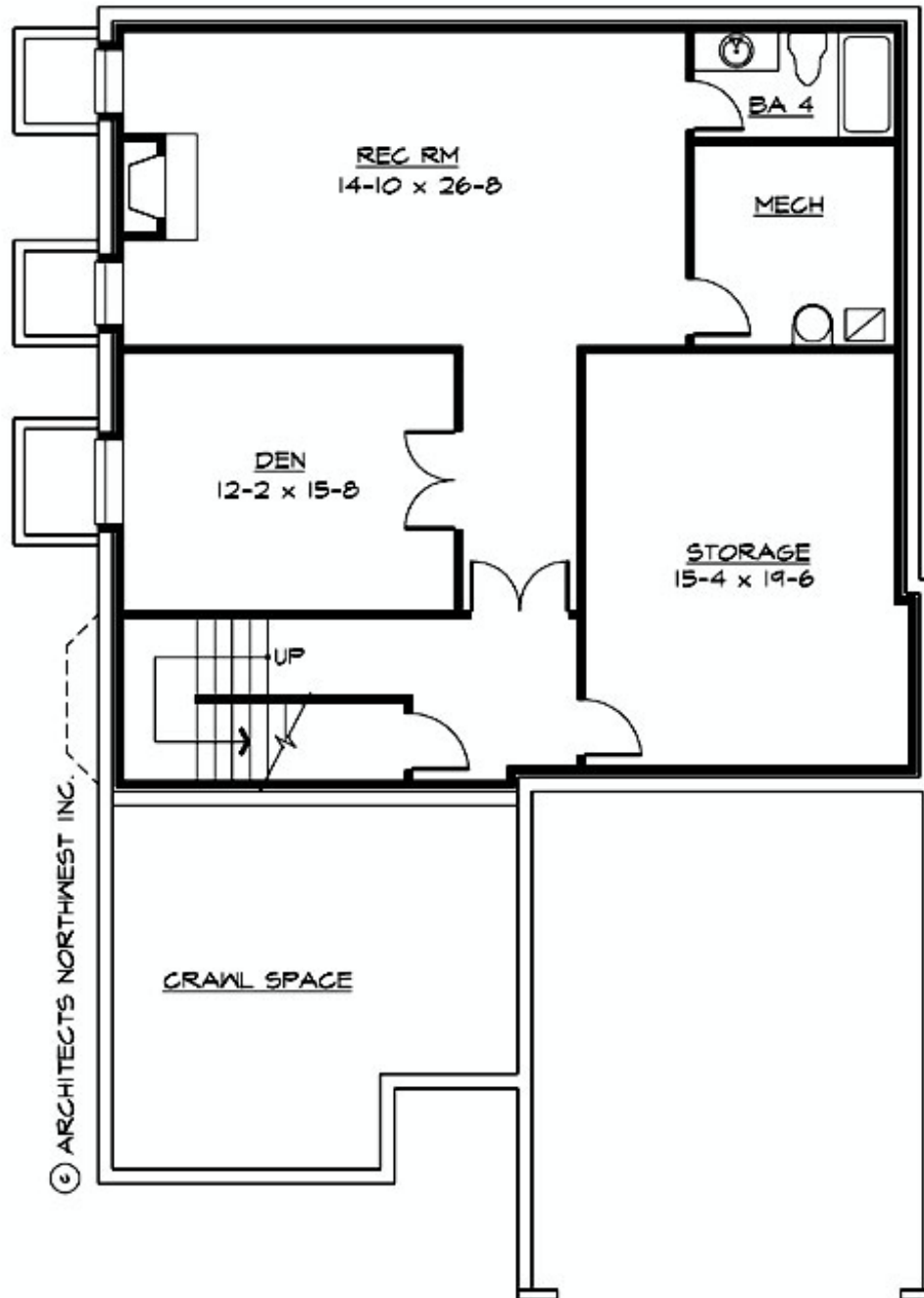
ALSTON PARK - PLAN M3452A2F-0FB

UPPER FLOOR



ALSTON PARK - PLAN M3452A2F-0FB

LOWER FLOOR



© ARCHITECTS NORTHWEST INC.



ALSTON PARK - PLAN M3452A2F-0FB

PLAN DETAILS

Area Summary

Total Area:	4911 sq. ft.
Main Floor:	1809 sq. ft.
Upper Floor:	1645 sq. ft.
Lower Floor:	1457 sq. ft.
Garage Floor:	457 sq. ft.

General Information

Stories:	3
Width:	40'-0"
Depth:	82'-0"
Height:	23'-6"

Architectural Style

Craftsman
Northwest
Shingle

Number of Rooms

Bedrooms:	4
Full Baths:	4
Half Baths:	1

Garage

Garage Size:	2
Garage Door Location:	Front

Roof Pitches

Primary:	5:12
Secondary:	8:12

Wall Heights

Main:	9'-0"
Upper:	8'-0"
3rd Floor:	0'-0"
Lower:	8'-0"

Foundation Type

Cellar Basement

Roof Framing

Trusses

Floor Load

Live (lbs):	40 PSF
Dead (lbs):	10 PSF

Roof Load

Live (lbs):	25 PSF
Dead (lbs):	15 PSF
Wind:	85 MPH

Design Features

- Bonus Space @ Lower Floor
- Den/Office
- Front Porch
- Great Room
- Laundry Room @ Main & Upper Floor
- Master Bedroom @ Upper Floor Rear
- Narrow Lot
- View Lot - Rear