

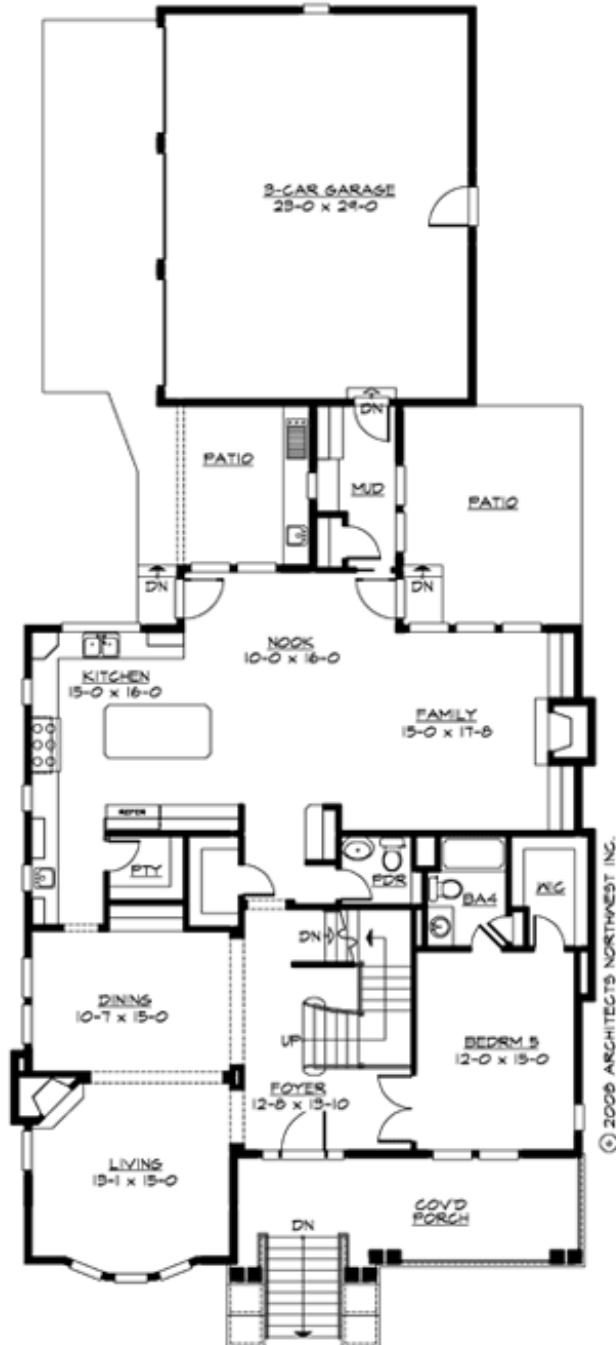
## DARTMOUTH - PLAN M3798A3S-0DB

Total Area: 5188 sq. ft.  
Garage Area: 716 sq. ft.  
Garage Area: 716 sq. ft.  
Garage Size: 3  
Stories: 3  
Bedrooms: 5  
Full Baths: 5  
Half Baths: 1  
Width: 44'-0"  
Depth: 100'-6"  
Height: 28'-0"  
Foundation: Daylight Basement



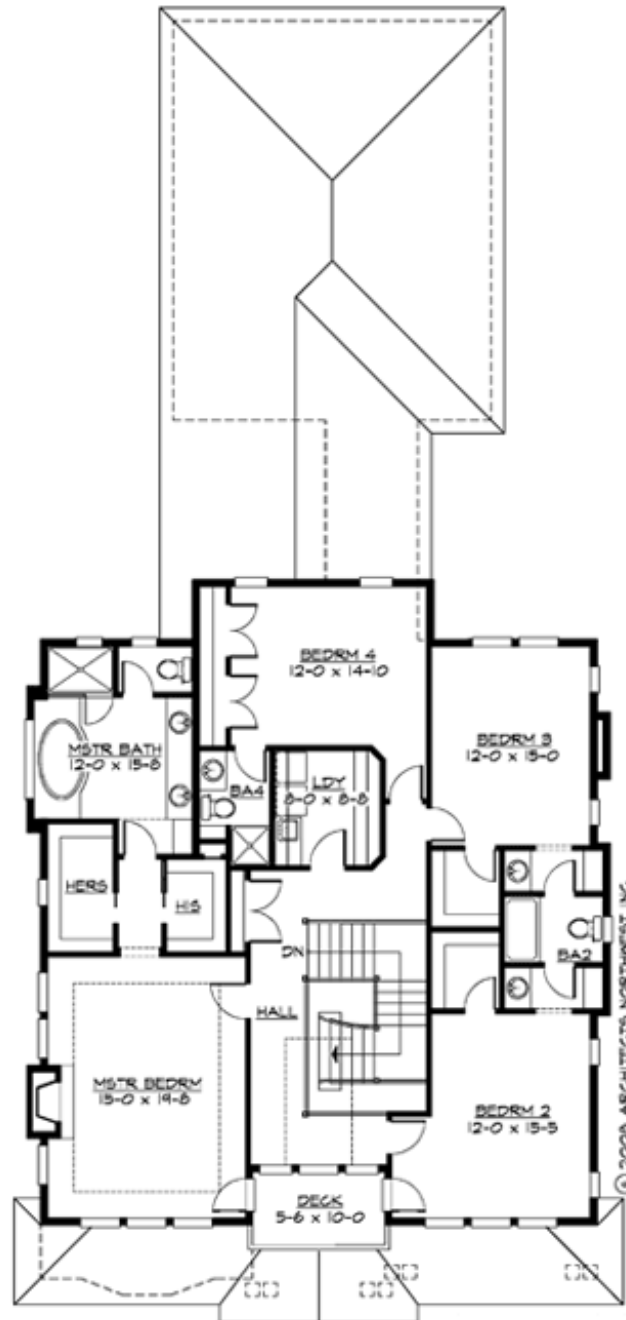
## DARTMOUTH - PLAN M3798A3S-0DB

### MAIN FLOOR



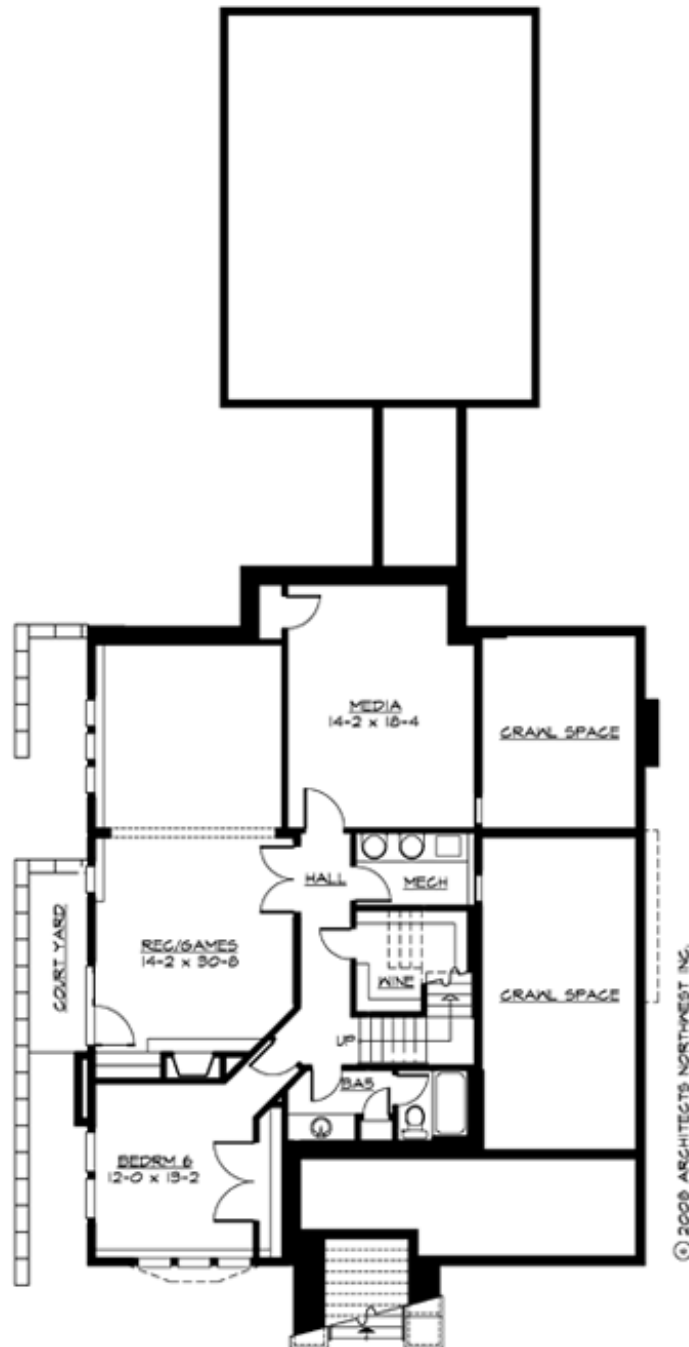
## DARTMOUTH - PLAN M3798A3S-0DB

### UPPER FLOOR



## DARTMOUTH - PLAN M3798A3S-0DB

### LOWER FLOOR



## **DARTMOUTH - PLAN M3798A3S-0DB**

### **PLAN DETAILS**

#### **Area Summary**

Total Area: 5188 sq. ft.  
Main Floor: 2005 sq. ft.  
Upper Floor: 1792 sq. ft.  
Lower Floor: 1391 sq. ft.  
Garage Floor: 716 sq. ft.

#### **General Information**

Stories: 3  
Width: 44'-0"  
Depth: 100'-6"  
Height: 28'-0"

#### **Architectural Style**

Farmhouse  
Shingle  
Traditional

#### **Number of Rooms**

Bedrooms: 5  
Full Baths: 5  
Half Baths: 1

#### **Garage**

Garage Size: 3  
Garage Door Location: Side

#### **Roof Pitches**

Primary: 4:12

#### **Wall Heights**

Main: 10'-0"  
Upper: 9'-0"  
3rd Floor: 0'-0"  
Lower: 9'-0"

#### **Foundation Type**

Daylight Basement

#### **Roof Framing**

Trusses

#### **Floor Load**

Live (lbs): 40 PSF  
Dead (lbs): 10 PSF

#### **Roof Load**

Live (lbs): 25 PSF  
Dead (lbs): 15 PSF  
Wind: 85 MPH

#### **Design Features**

- Bonus Space @ Lower Floor
- Den/Office
- Front Porch
- Laundry Room @ Main & Upper Floor
- Living & Family Room
- Master Bedroom @ Upper Floor Front
- Narrow Lot