

## KASLO - PLAN M4684A3S-0

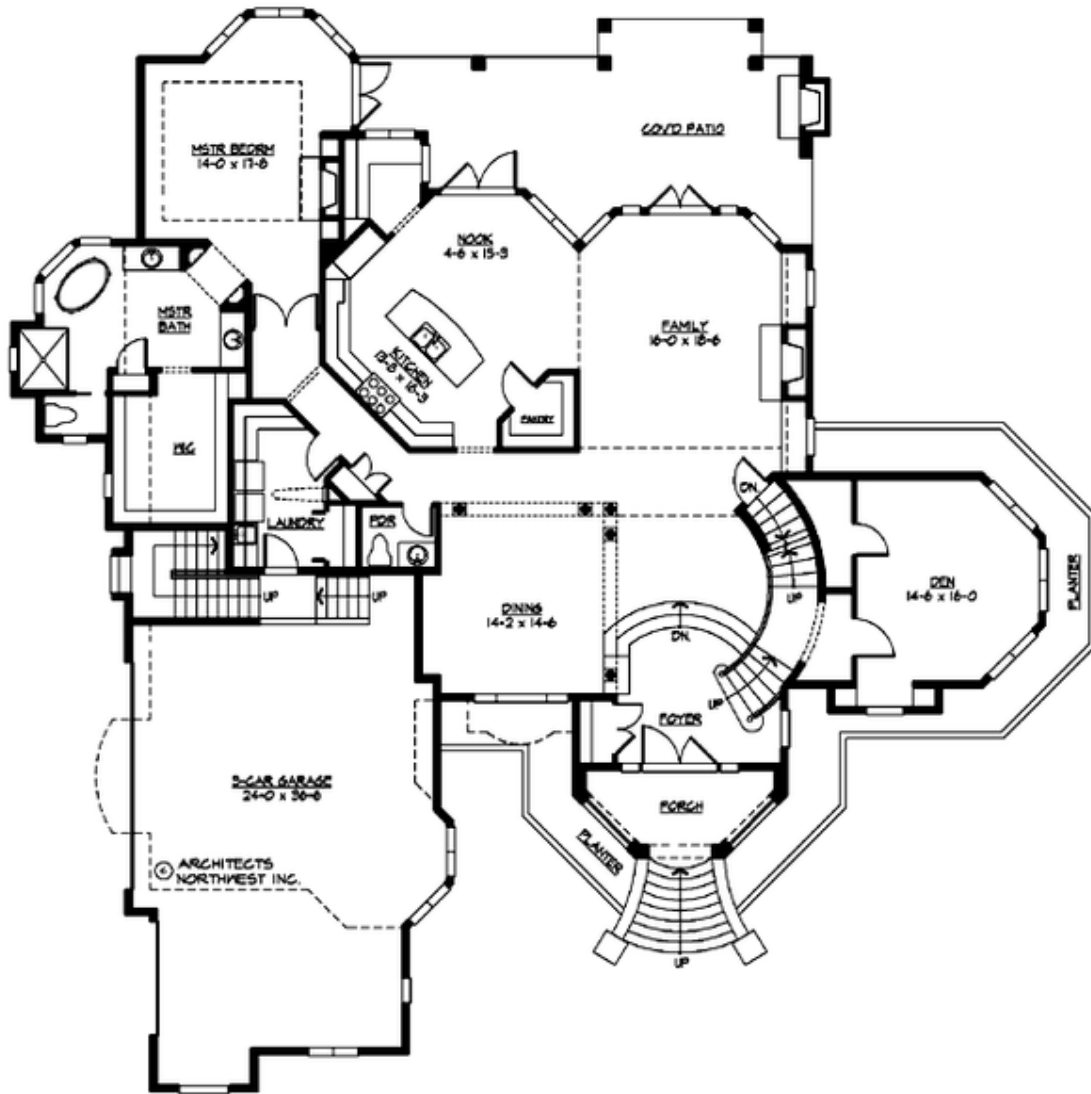
Total Area: 4684 sq. ft.  
 Garage Area: 941 sq. ft.  
 Garage Area: 941 sq. ft.  
 Garage Size: 3  
 Stories: 3  
 Bedrooms: 4  
 Full Baths: 3  
 Half Baths: 1  
 Width: 82'-0"  
 Depth: 86'-0"  
 Height: 33'-0"  
 Foundation: Crawl Space



***Traditional Elegance Sets the Kaslo Apart.*** A popular design featured at the 2005 Seattle Street of Dreams, its traditional elegance sets the luxurious Kaslo apart. The classic facade is highlighted by a sweeping stairway leading to the graceful columns and arches of its grand octagonal entry. Textures of cut stone and stucco trimmed with quoins convey a dignified air. From the entry, your view is directed through the soaring two-story foyer and family room beyond spanned by a dramatic bridge. Columns define the formal dining room, while the gracious curved stair accesses the mid-level den and wine cellar or card room below. The family room, gourmet island kitchen, nook, and spacious master suite all open to the huge rear BBQ porch with fireplace. Upstairs are two large secondary bedrooms and flexible one-bedroom mother-in-law apartment with separate stair access.

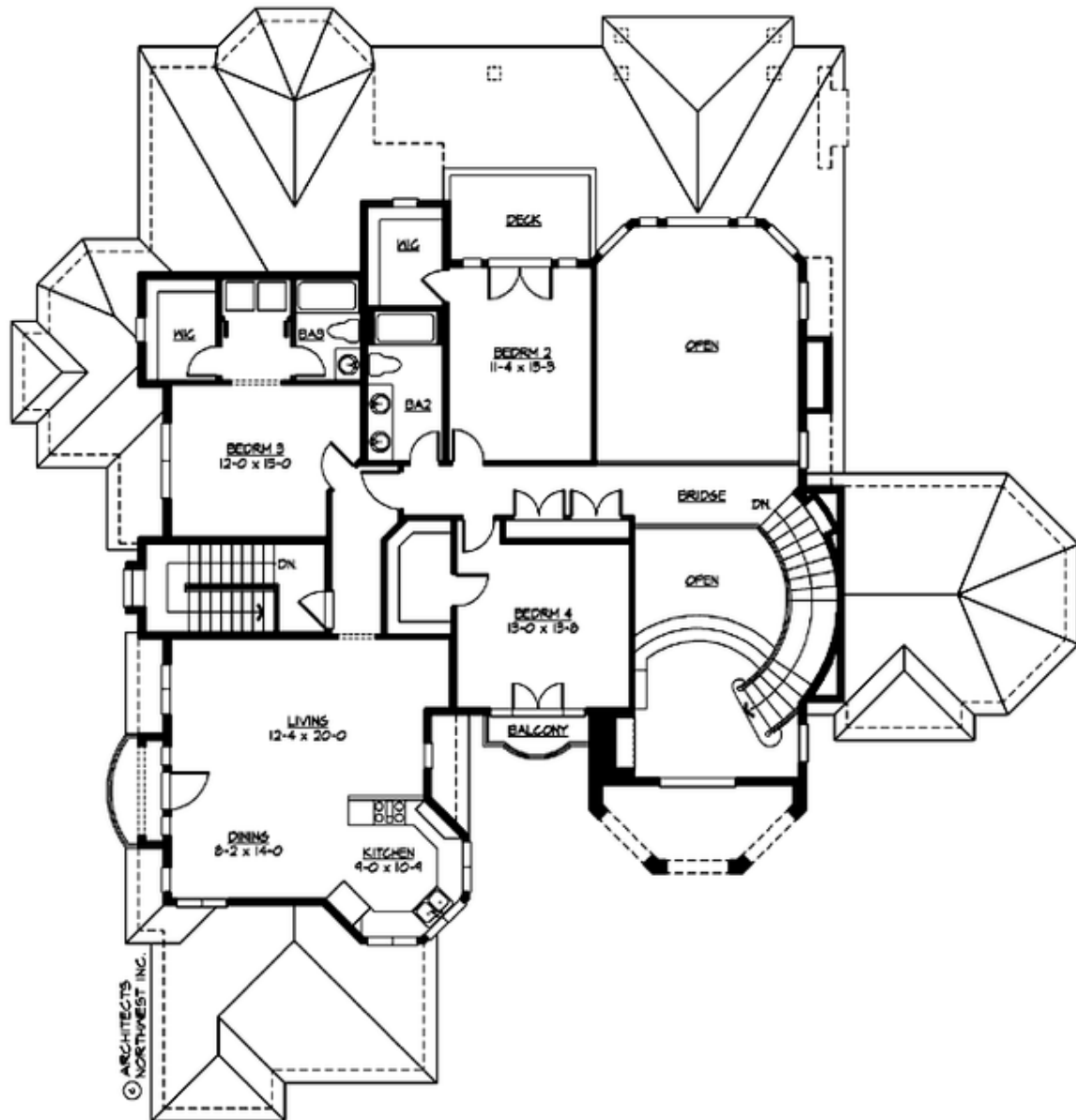
**KASLO - PLAN M4684A3S-0**

MAIN FLOOR



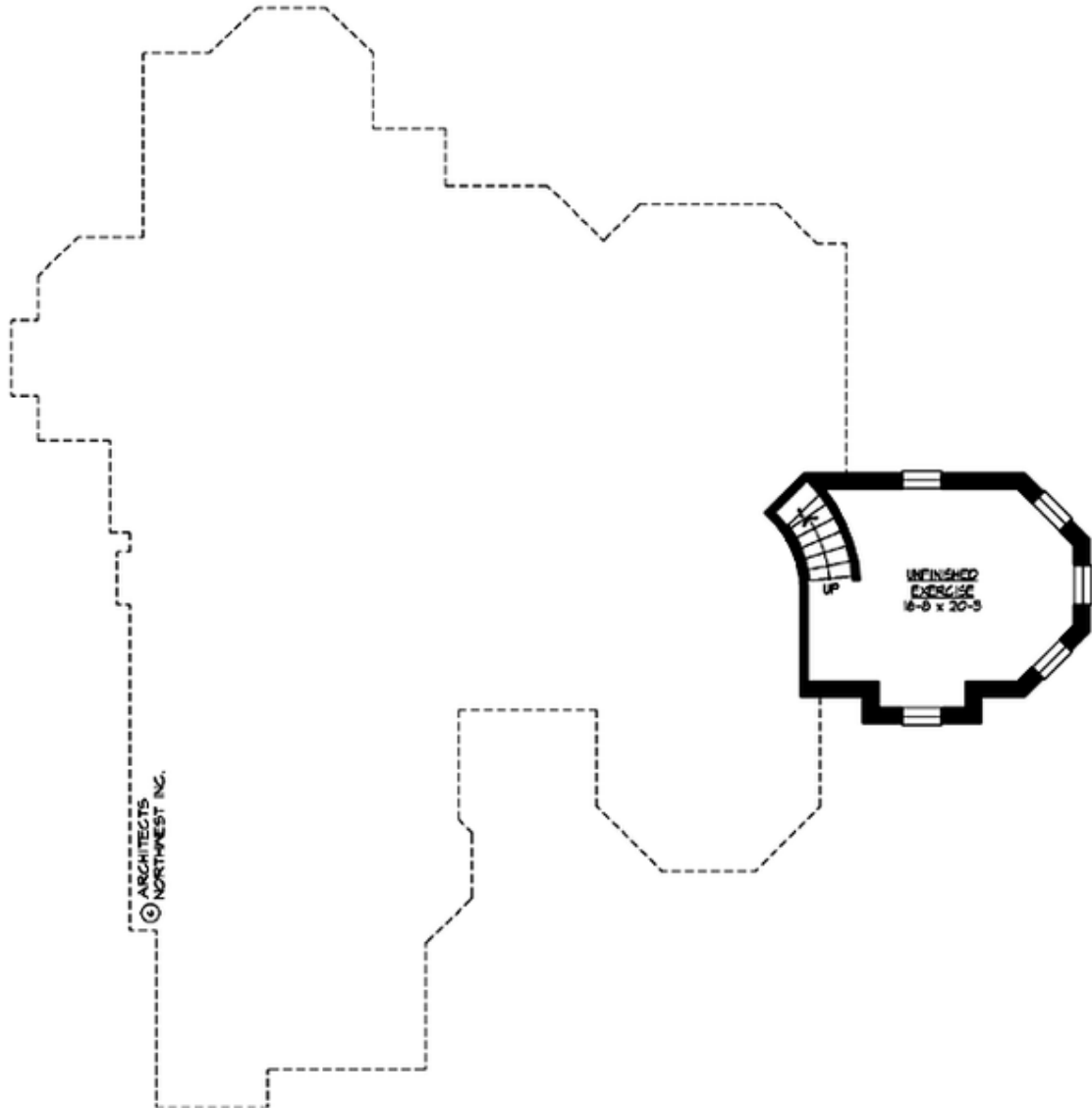
**KASLO - PLAN M4684A3S-0**

**UPPER FLOOR**



**KASLO - PLAN M4684A3S-0**

**LOWER FLOOR**





## KASLO - PLAN M4684A3S-0

### PLAN DETAILS

#### Area Summary

Total Area:	4684 sq. ft.
Main Floor:	2661 sq. ft.
Upper Floor:	1648 sq. ft.
Lower Floor:	375 sq. ft.
Garage Floor:	941 sq. ft.

#### General Information

Stories:	3
Width:	82'-0"
Depth:	86'-0"
Height:	33'-0"

#### Architectural Style

Chateau  
European  
Traditional

#### Number of Rooms

Bedrooms:	4
Full Baths:	3
Half Baths:	1

#### Garage

Garage Size:	3
Garage Door Location:	Side

#### Roof Pitches

Primary:	10:12
Secondary:	7:12

#### Wall Heights

Main:	10'-0"
Upper:	8'-0"
3rd Floor:	0'-0"
Lower:	9'-0"

#### Foundation Type

Crawl Space

#### Roof Framing

Trusses

#### Floor Load

Live (lbs):	40 PSF
Dead (lbs):	10 PSF

#### Roof Load

Live (lbs):	25 PSF
Dead (lbs):	15 PSF
Wind:	85 MPH

#### Design Features

- Best Selling Plan
- Bonus Space @ Upper Floor & Lower Floor
- Den/Office
- Great Room
- Laundry Room @ Main & Upper Floor
- Master Bedroom @ Main Floor Rear
- Rear Porch