

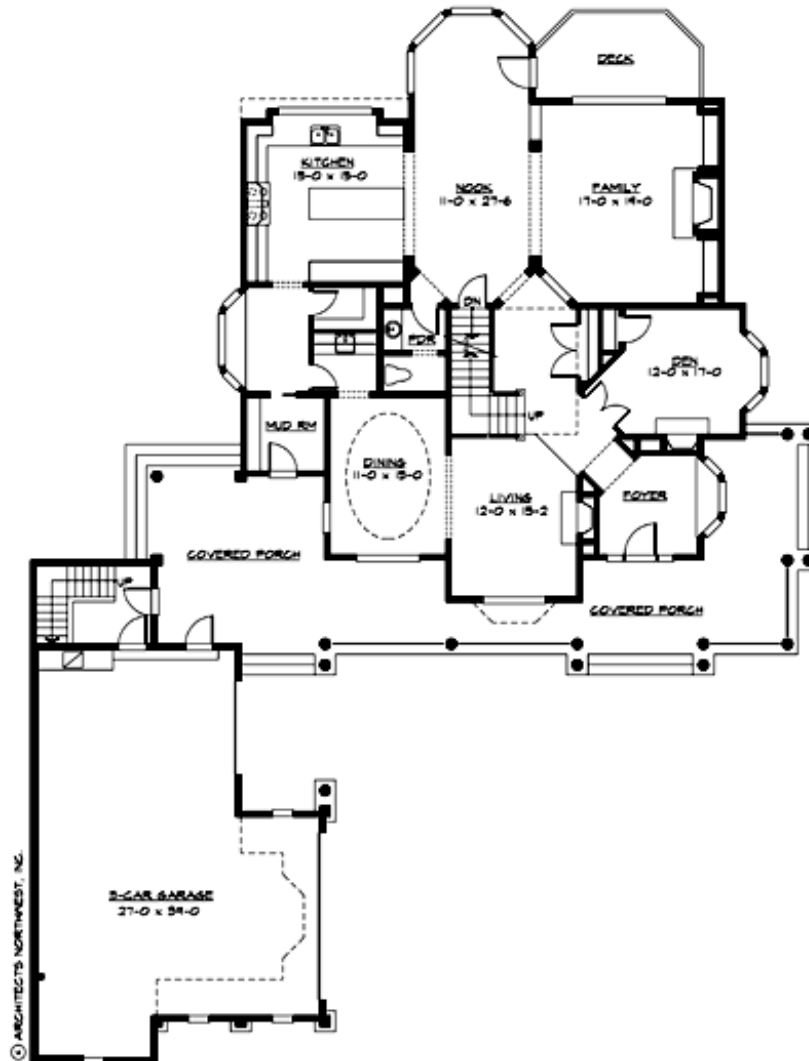
## BRIDLE TRAILS PARK - PLAN M4925A3SD-0DB

Total Area: 5945 sq. ft.  
Garage Area: 928 sq. ft.  
Garage Area: 928 sq. ft.  
Garage Size: 3  
Stories: 3  
Bedrooms: 5  
Full Baths: 4  
Half Baths: 1  
Width: 75'-0"  
Depth: 101'-0"  
Height: 34'-6"  
Foundation: Daylight Basement



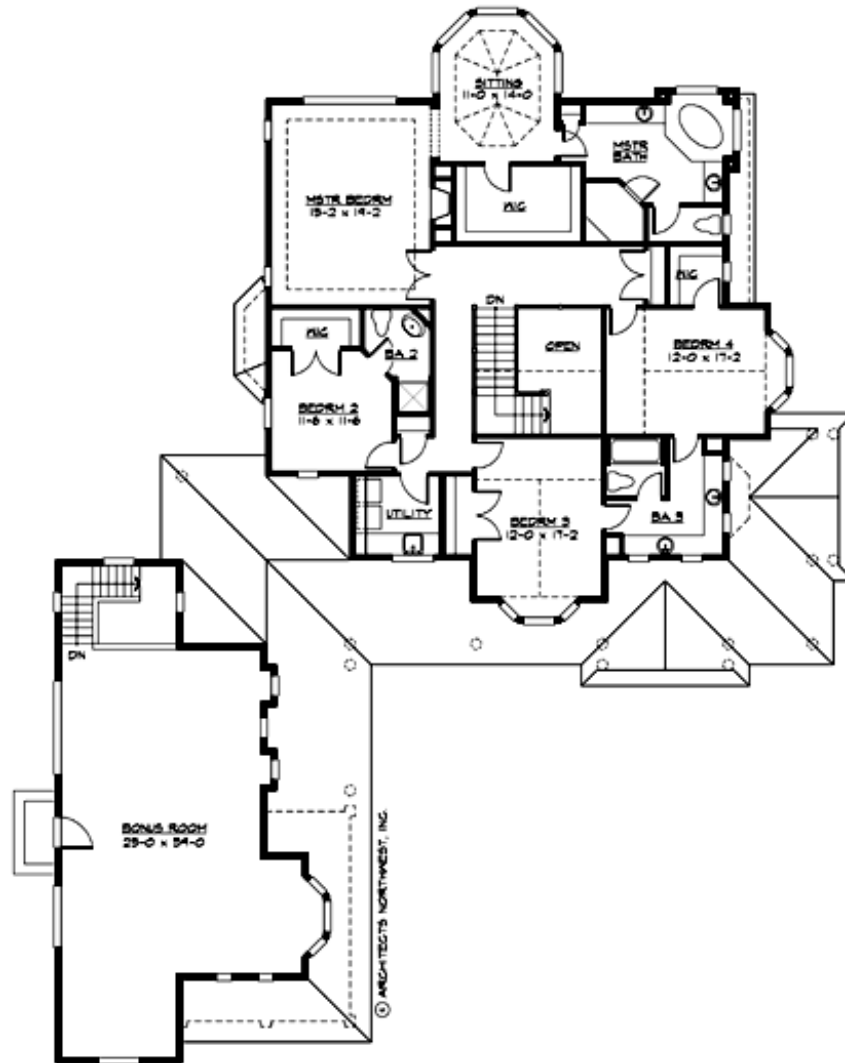
**BRIDLE TRAILS PARK - PLAN M4925A3SD-0DB**

**MAIN FLOOR**



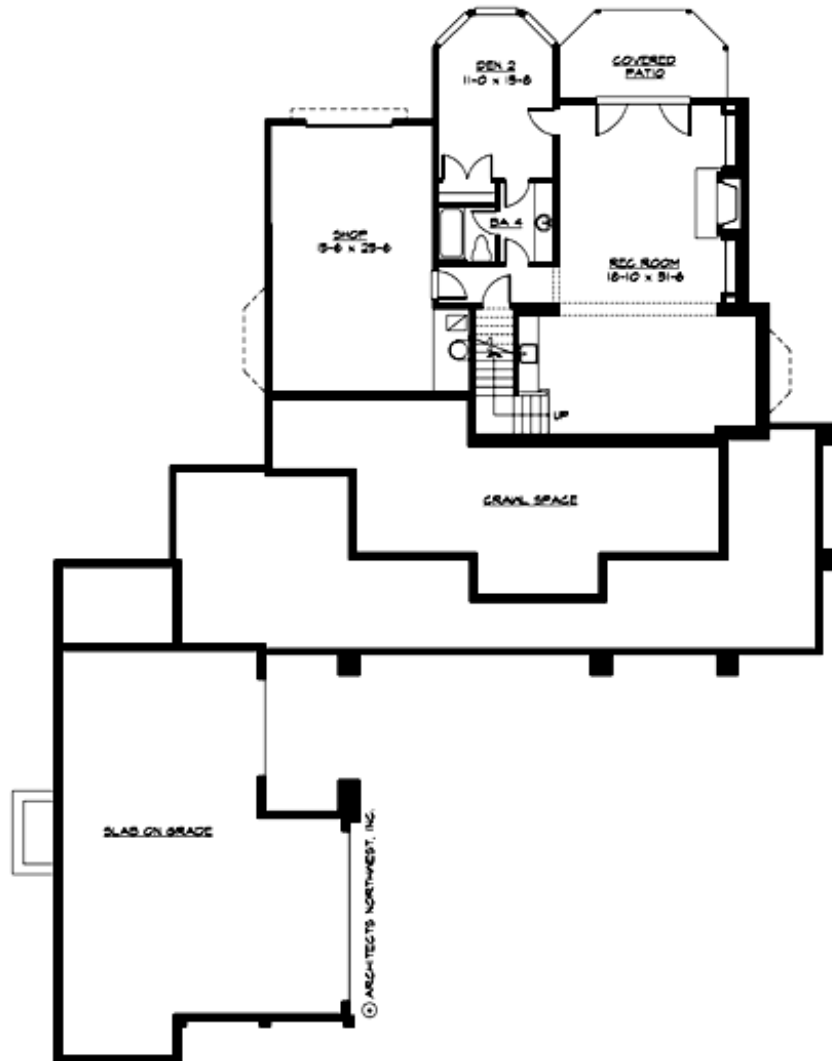
**BRIDLE TRAILS PARK - PLAN M4925A3SD-0DB**

**UPPER FLOOR**



**BRIDLE TRAILS PARK - PLAN M4925A3SD-0DB**

**LOWER FLOOR**





## BRIDLE TRAILS PARK - PLAN M4925A3SD-0DB

### PLAN DETAILS

#### Area Summary

Total Area:	5945 sq. ft.
Main Floor:	2055 sq. ft.
Upper Floor:	2870 sq. ft.
Lower Floor:	1020 sq. ft.
Garage Floor:	928 sq. ft.

#### General Information

Stories:	3
Width:	75'-0"
Depth:	101'-0"
Height:	34'-6"

#### Architectural Style

Country  
Farmhouse  
Traditional

#### Number of Rooms

Bedrooms:	5
Full Baths:	4
Half Baths:	1

#### Garage

Garage Size:	3
Garage Door Location:	Side
Garage Type:	Detached

#### Roof Pitches

Primary:	10:12
Secondary:	4:12

#### Wall Heights

Main:	9'-0"
Upper:	9'-0"
3rd Floor:	0'-0"
Lower:	9'-0"

#### Foundation Type

Daylight Basement

#### Roof Framing

Trusses

#### Floor Load

Live (lbs):	40 PSF
Dead (lbs):	10 PSF

#### Roof Load

Live (lbs):	25 PSF
Dead (lbs):	15 PSF
Wind:	85 MPH

#### Design Features

- Bonus Space @ Upper Floor & Lower Floor
- Den/Office
- Laundry Room @ Main & Upper Floor
- Living & Family Room
- Master Bedroom @ Upper Floor Rear
- Wrap-Around Porch