

## WESTHAMPTON - PLAN M6540A3S-0

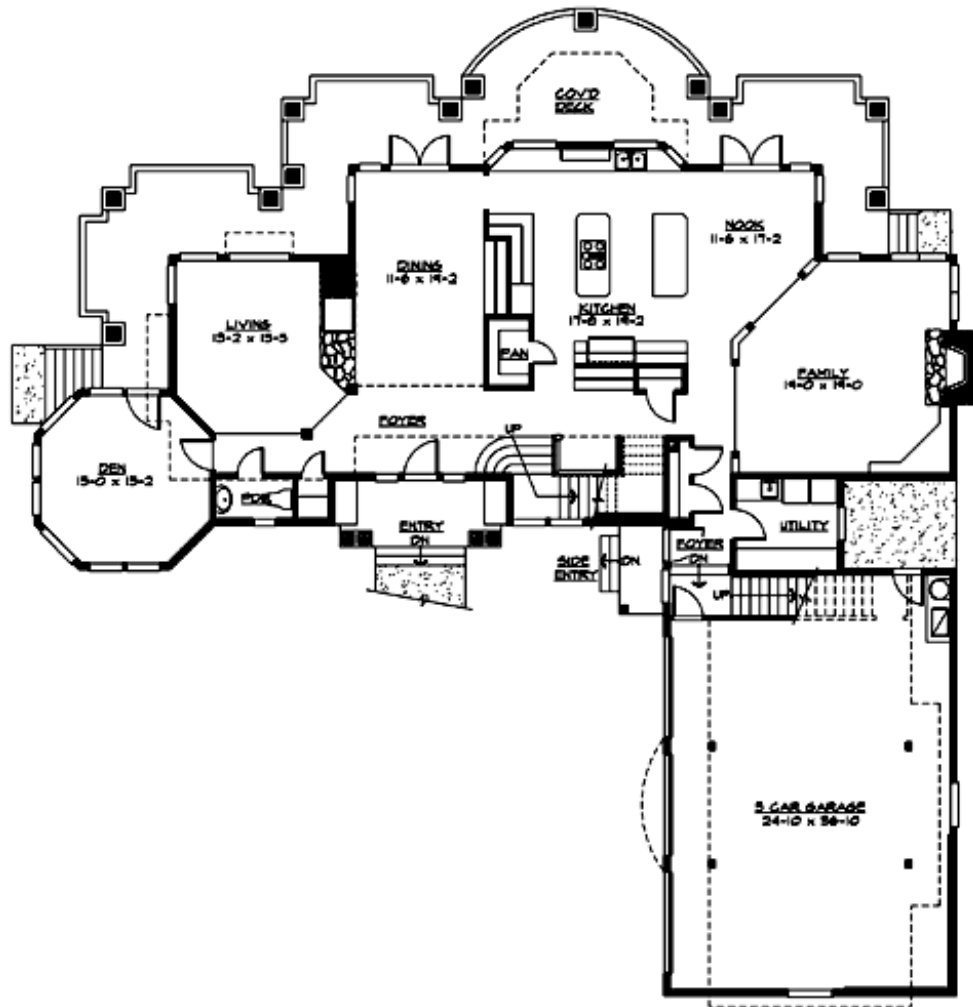
Total Area: 4719 sq. ft.  
Garage Area: 956 sq. ft.  
Garage Area: 956 sq. ft.  
Garage Size: 3  
Stories: 2  
Bedrooms: 3  
Full Baths: 3  
Half Baths: 1  
Width: 84'-0"  
Depth: 88'-0"  
Height: 28'-6"  
Foundation: Crawl Space



**PLEASE ALLOW 4 WEEKS FOR DELIVERY**

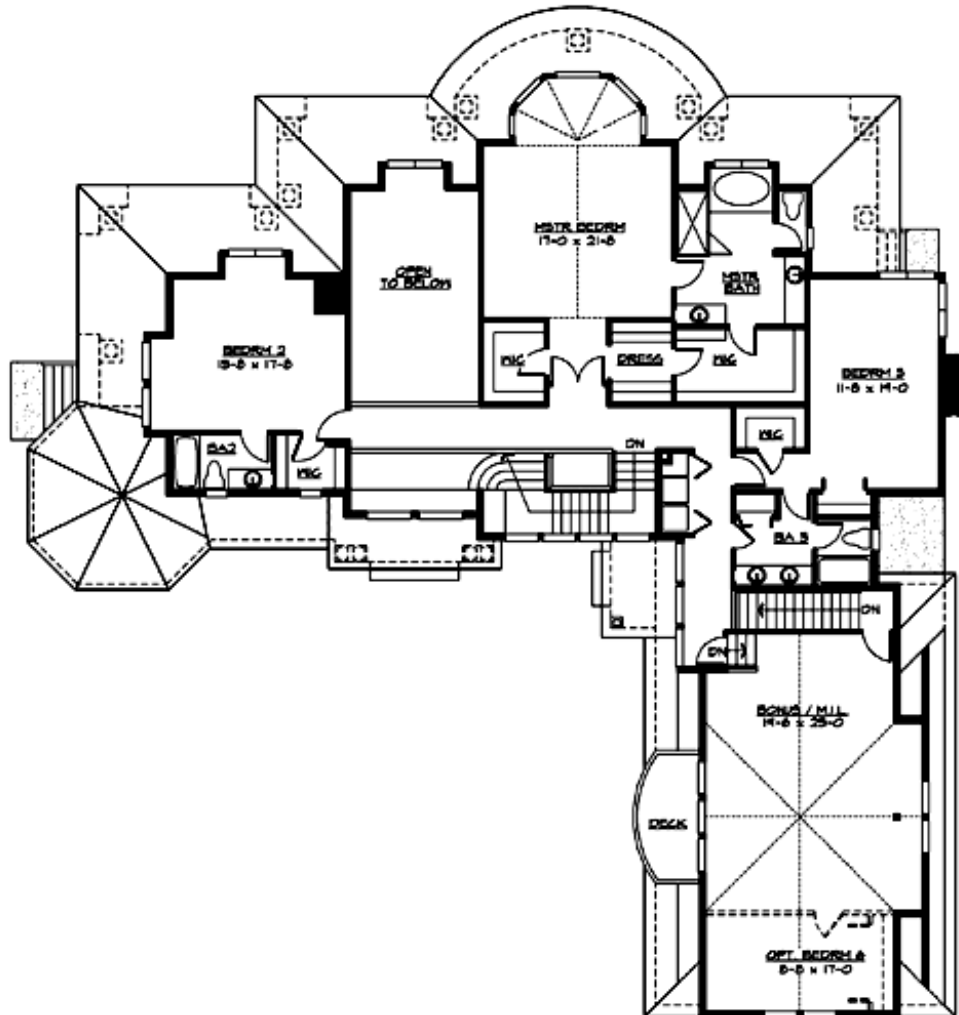
## WESTHAMPTON - PLAN M6540A3S-0

### MAIN FLOOR



## WESTHAMPTON - PLAN M6540A3S-0

### UPPER FLOOR





## WESTHAMPTON - PLAN M6540A3S-0

### PLAN DETAILS

#### Area Summary

Total Area: 4719 sq. ft.  
Main Floor: 2227 sq. ft.  
Upper Floor: 2492 sq. ft.  
Garage Floor: 956 sq. ft.

#### General Information

Stories: 2  
Width: 84'-0"  
Depth: 88'-0"  
Height: 28'-6"

#### Architectural Style

Craftsman  
Hampton  
Shingle

#### Number of Rooms

Bedrooms: 3  
Full Baths: 3  
Half Baths: 1

#### Garage

Garage Size: 3  
Garage Door Location: Side

#### Roof Pitches

Primary: 8:12  
Secondary: 12:12

#### Wall Heights

Main: 10'-0"  
Upper: 8'-0"  
3rd Floor: 0'-0"  
Lower: 0'-0"

#### Foundation Type

Crawl Space

#### Roof Framing

Stick

#### Floor Load

Live (lbs): 40 PSF  
Dead (lbs): 10 PSF

#### Roof Load

Live (lbs): 25 PSF  
Dead (lbs): 15 PSF  
Wind: 85 MPH

#### Design Features

- Bonus Space @ Upper Floor
- Den/Office
- Laundry Room @ Main & Upper Floor
- Living & Family Room
- Master Bedroom @ Upper Floor Rear
- Rear Porch
- View Lot - Rear