

## PARADISE LODGE - PLAN M8515A3ST3FD-0

Total Area: 8515 sq. ft.  
 Garage Area: 2275 sq. ft.  
 Garage Area: 2275 sq. ft.  
 Garage Size: 5+  
 Stories: 3  
 Bedrooms: 7  
 Full Baths: 8  
 Half Baths: 1  
 Width: 150'-0"  
 Depth: 90'-6"  
 Height: 39'-6"  
 Foundation: Crawl Space

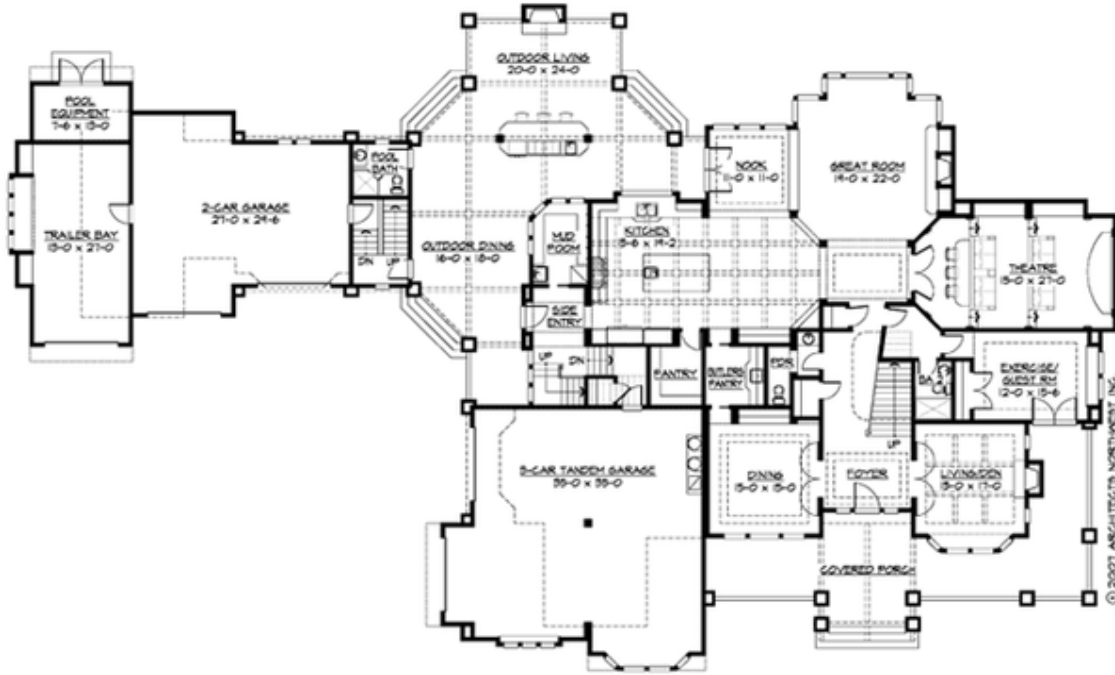


### ***Rustic Mountain Lodge Estate, Rugged and Refined.***

The Paradise Lodge is a spectacular luxury residence designed with powerful accents of Craftsman, Lodge, Country and Tudor styles. Arriving at the welcoming front porch, visitors enter the grand foyer with its majestic flared central stairway, with the grand, 2-story great room visible beyond. The formal living and dining room with butler's pantry are accessed via the foyer. The great room anchors an expansive family living area, including a sprawling island kitchen, intimate nook, a stepped-floor theatre perfect for true media enthusiasts, and a private guest or exercise suite. A mud entry, pantry and 5-car attached garage complete the main floor. The second floor features three bedroom suites, a private office, a deluxe laundry, a huge bonus room with step-down games area, and a magnificent vaulted master suite with sitting room, his-and-hers walk-in closets, and a decadent bathroom. The unique third floor has a dramatic overlook to the central stair hall, a vaulted loft or office with balcony, a full bath, and a secret room designed to tweak the owner's imagination. A huge covered recreation porch connects the main floor to the guest house, offering an island kitchen/bar, a living area with fireplace, and dining area. The guest house includes a pool bath and pool equipment room, a 2-car garage plus boat trailer bay, and a complete, vaulted one bedroom apartment on the second floor.

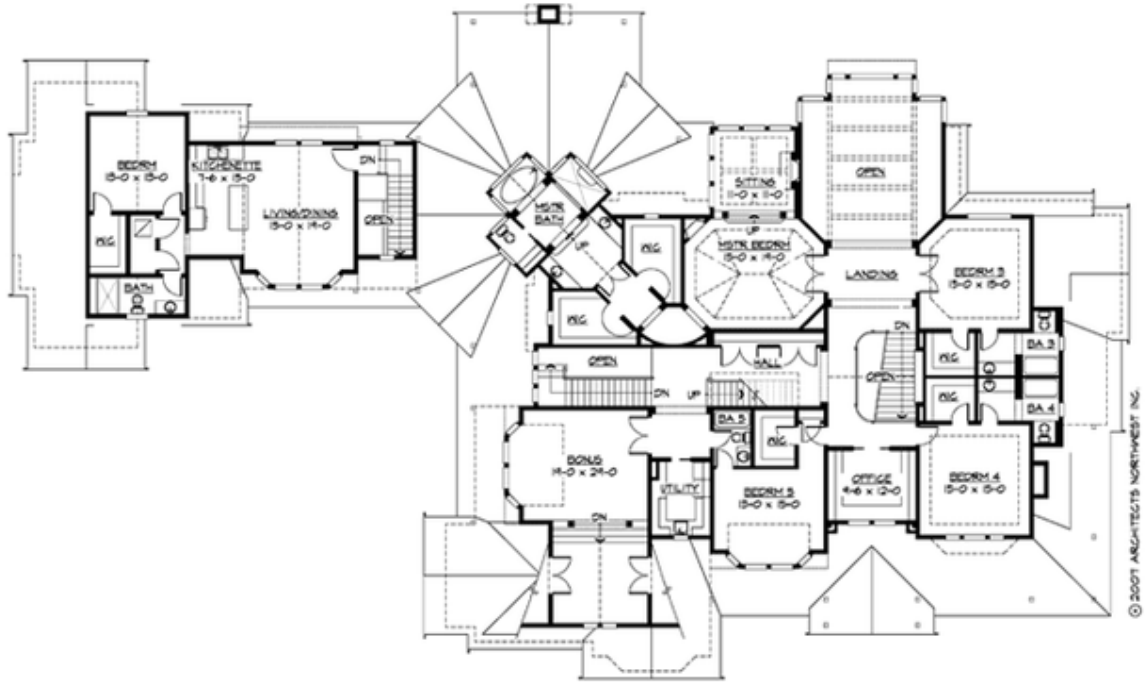
**PARADISE LODGE - PLAN M8515A3ST3FD-0**

MAIN FLOOR



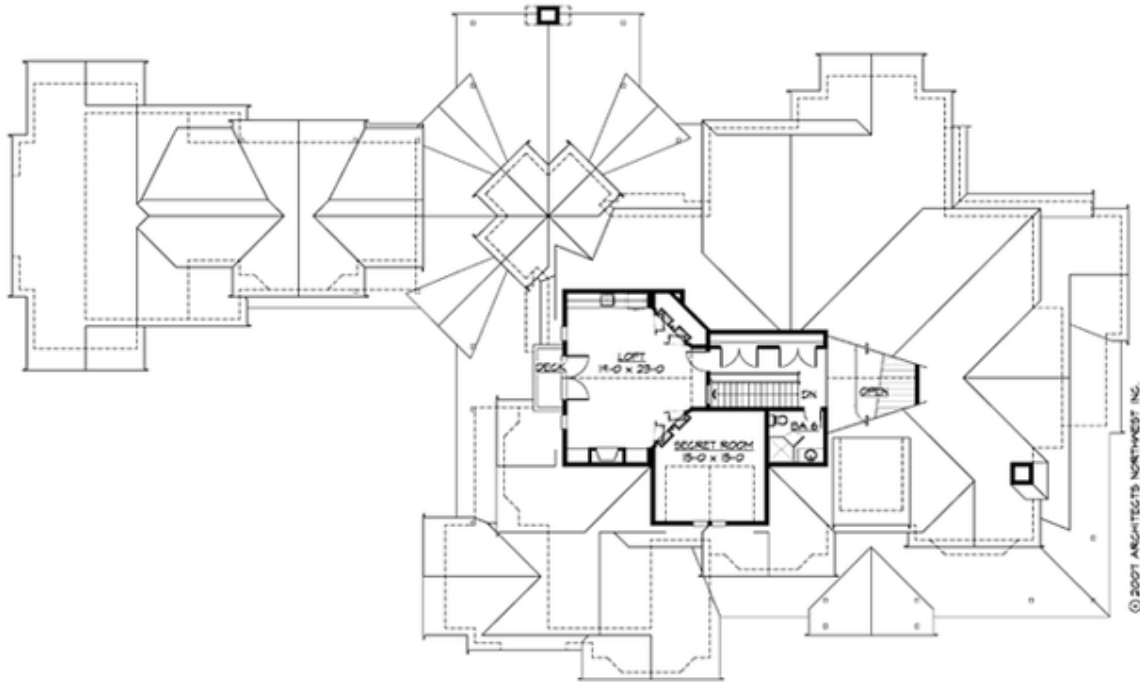
**PARADISE LODGE - PLAN M8515A3ST3FD-0**

**UPPER FLOOR**



**PARADISE LODGE - PLAN M8515A3ST3FD-0**

**THIRD FLOOR**





## PARADISE LODGE - PLAN M8515A3ST3FD-0

### PLAN DETAILS

#### Area Summary

Total Area:	8515 sq. ft.
Main Floor:	3455 sq. ft.
Upper Floor:	4235 sq. ft.
3rd Floor:	825 sq. ft.
Garage Floor:	2275 sq. ft.

#### General Information

Stories:	3
Width:	150'-0"
Depth:	90'-6"
Height:	39'-6"

#### Architectural Style

Farmhouse  
Lodge  
Shingle

#### Number of Rooms

Bedrooms:	7
Full Baths:	8
Half Baths:	1

#### Garage

Garage Size:	5+
Garage Door Location:	Side
Garage Type:	Detached

#### Roof Pitches

Primary:	10:12
Secondary:	4:12

#### Wall Heights

Main:	10'-0"
Upper:	9'-0"
3rd Floor:	7'-0"
Lower:	0'-0"

#### Foundation Type

Crawl Space

#### Roof Framing

Trusses

#### Floor Load

Live (lbs):	40 PSF
Dead (lbs):	10 PSF

#### Roof Load

Live (lbs):	25 PSF
Dead (lbs):	15 PSF
Wind:	85 MPH

#### Design Features

- Best Selling Plan
- Bonus Space @ Main Floor & Upper Floor
- Den/Office
- Great Room
- Laundry Room @ Main & Upper Floor
- Master Bedroom @ Upper Floor Rear
- View Lot - Rear
- Wrap-Around Porch