

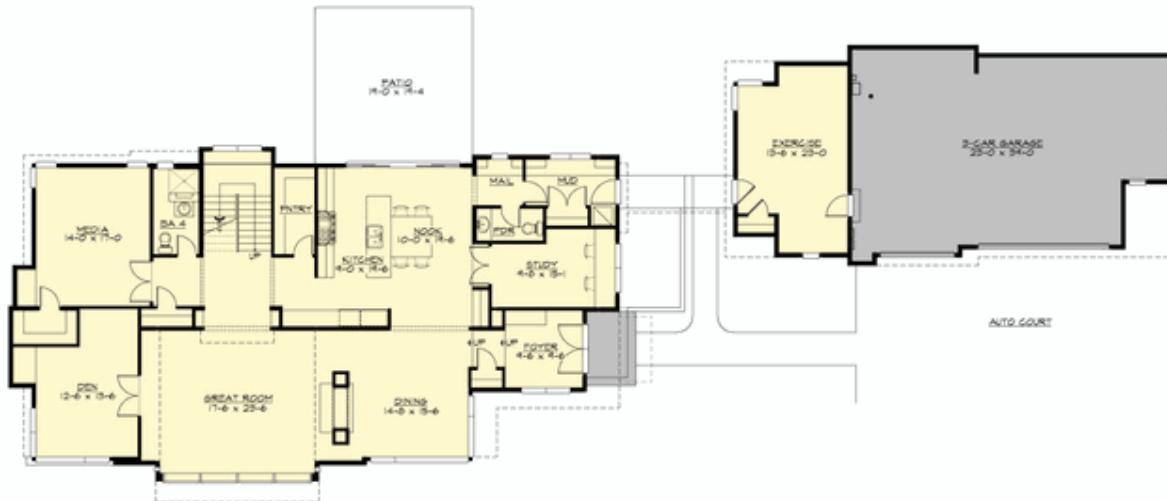
## LOVETT - PLAN M5062A3FD-0

Total Area: 5062 sq. ft.  
Garage Area: 946 sq. ft.  
Garage Area: 946 sq. ft.  
Garage Size: 3  
Stories: 2  
Bedrooms: 3  
Full Baths: 4  
Half Baths: 1  
Width: 143'-0"  
Depth: 53'-6"  
Height: 29'-0"  
Foundation: Crawl Space



**LOVETT - PLAN M5062A3FD-0**

## MAIN FLOOR



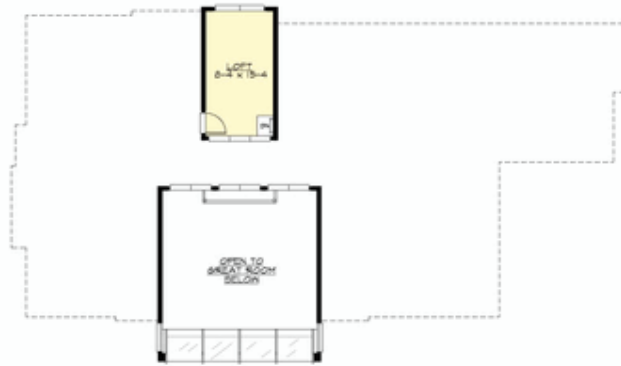
## LOVETT - PLAN M5062A3FD-0

### UPPER FLOOR



**LOVETT - PLAN M5062A3FD-0**

**THIRD FLOOR**





## LOVETT - PLAN M5062A3FD-0

### PLAN DETAILS

#### Area Summary

Total Area: 5062 sq. ft.  
Main Floor: 2879 sq. ft.  
Upper Floor: 2031 sq. ft.  
3rd Floor: 152 sq. ft.  
Garage Floor: 946 sq. ft.

#### General Information

Stories: 2  
Width: 143'-0"  
Depth: 53'-6"  
Height: 29'-0"

#### Architectural Style

Contemporary  
Modern  
Prairie

#### Number of Rooms

Bedrooms: 3  
Full Baths: 4  
Half Baths: 1

#### Garage

Garage Size: 3  
Garage Door Location: Front  
Garage Type: Detached

#### Roof Pitches

Primary: 0:12  
Secondary: 2:12

#### Wall Heights

Main: 10'-0"  
Upper: 8'-0"  
3rd Floor: 6'-0"  
Lower: 0'-0"

#### Foundation Type

Crawl Space

#### Roof Framing

Stick

#### Floor Load

Live (lbs): 40 PSF  
Dead (lbs): 10 PSF

#### Roof Load

Live (lbs): 25 PSF  
Dead (lbs): 15 PSF  
Wind: 85 MPH

#### Design Features

- Bonus Space @ Main Floor
- Den/Office
- Front Porch
- Great Room
- Laundry Room @ Main & Upper Floor
- Luxury Plan
- Master Bedroom @ Upper Floor Front
- View Lot - Front
- Wide Lot