

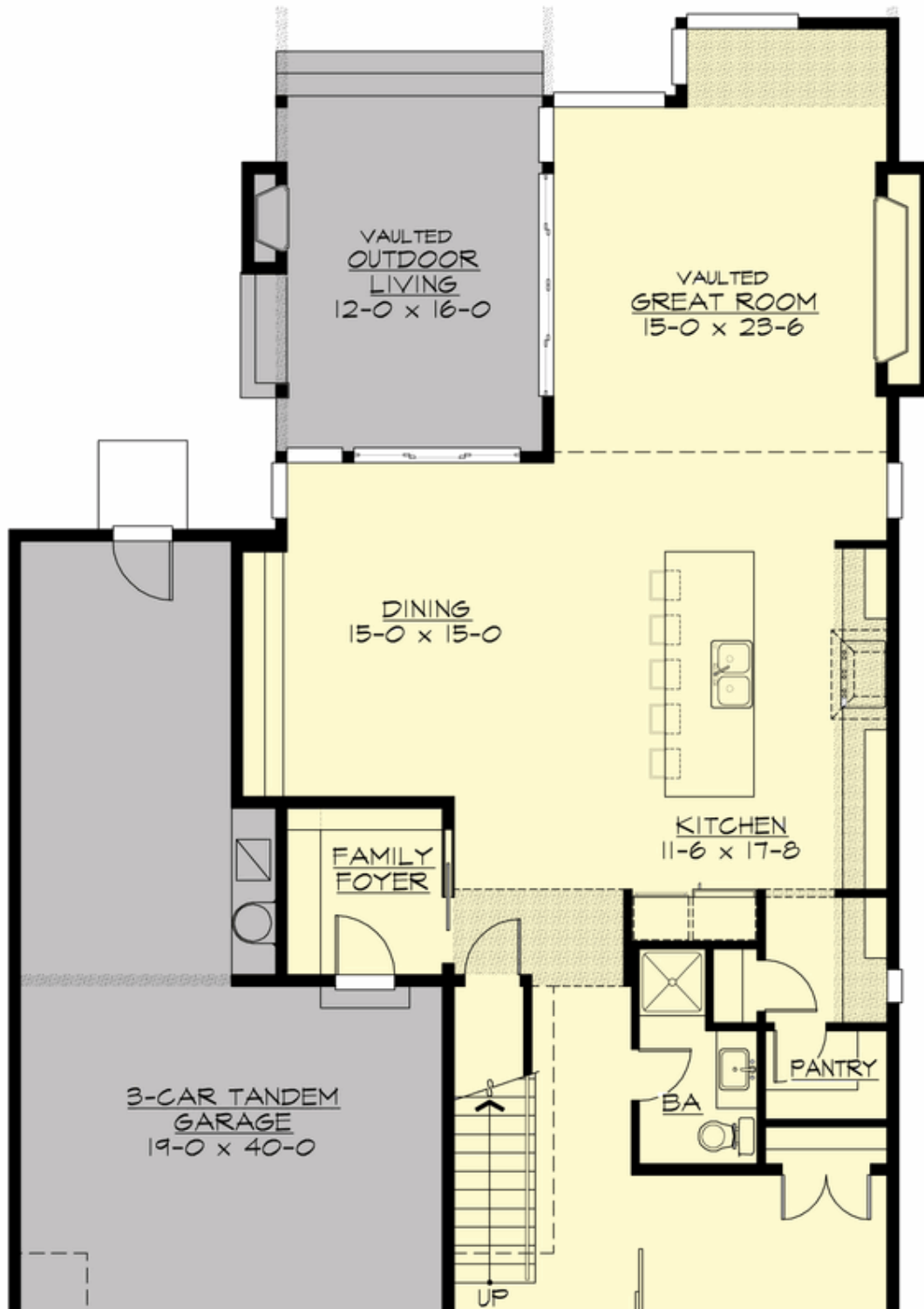
## RAYLAN - PLAN M3110A3FT-0

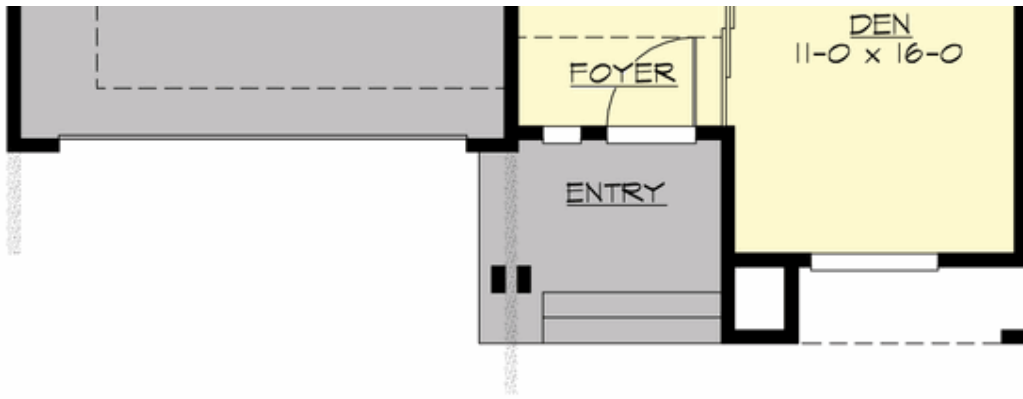
Total Area: 3110 sq. ft.  
Garage Area: 635 sq. ft.  
Garage Area: 635 sq. ft.  
Garage Size: 3  
Stories: 2  
Bedrooms: 4  
Full Baths: 3  
Width: 40'-0"  
Depth: 71'-6"  
Height: 26'-0"  
Foundation: Crawl Space



## RAYLAN - PLAN M3110A3FT-0

### MAIN FLOOR

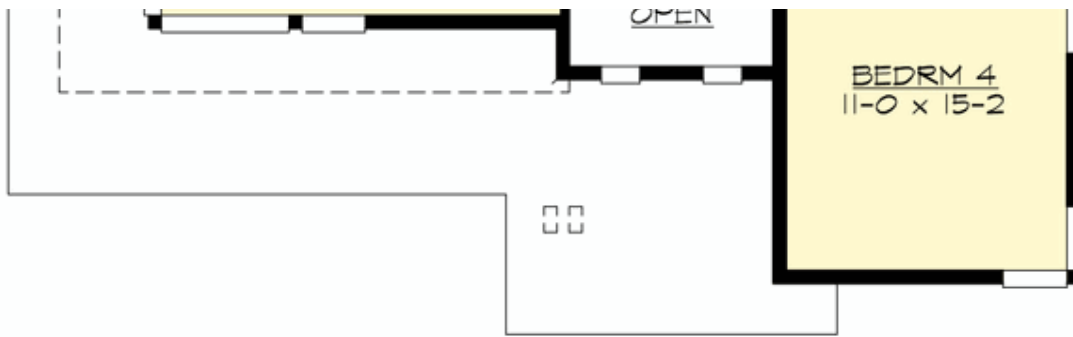




**RAYLAN - PLAN M3110A3FT-0**

**UPPER FLOOR**





## RAYLAN - PLAN M3110A3FT-0

### PLAN DETAILS

#### Area Summary

Total Area: 3110 sq. ft.  
Main Floor: 1445 sq. ft.  
Upper Floor: 1665 sq. ft.  
Garage Floor: 635 sq. ft.

#### General Information

Stories: 2  
Width: 40'-0"  
Depth: 71'-6"  
Height: 26'-0"

#### Architectural Style

Contemporary  
Modern  
Northwest

#### Number of Rooms

Bedrooms: 4  
Full Baths: 3

#### Garage

Garage Size: 3  
Garage Door Location: Front  
Garage Type: Tandem

#### Roof Pitches

Primary: 4:12  
Secondary: 2:12

#### Wall Heights

Main: 9'-0"  
Upper: 8'-0"  
3rd Floor: 0'-0"  
Lower: 0'-0"

#### Foundation Type

Crawl Space

#### Roof Framing

Combination

#### Floor Load

Live (lbs): 40 PSF  
Dead (lbs): 10 PSF

#### Roof Load

Live (lbs): 25 PSF  
Dead (lbs): 15 PSF  
Wind: 85 MPH

#### Design Features

- Bonus Space @ Upper Floor
- Den/Office
- Great Room
- Laundry Room @ Upper Floor
- Master Bedroom @ Upper Floor Rear
- Narrow Lot
- Rear Porch
- View Lot - Rear