

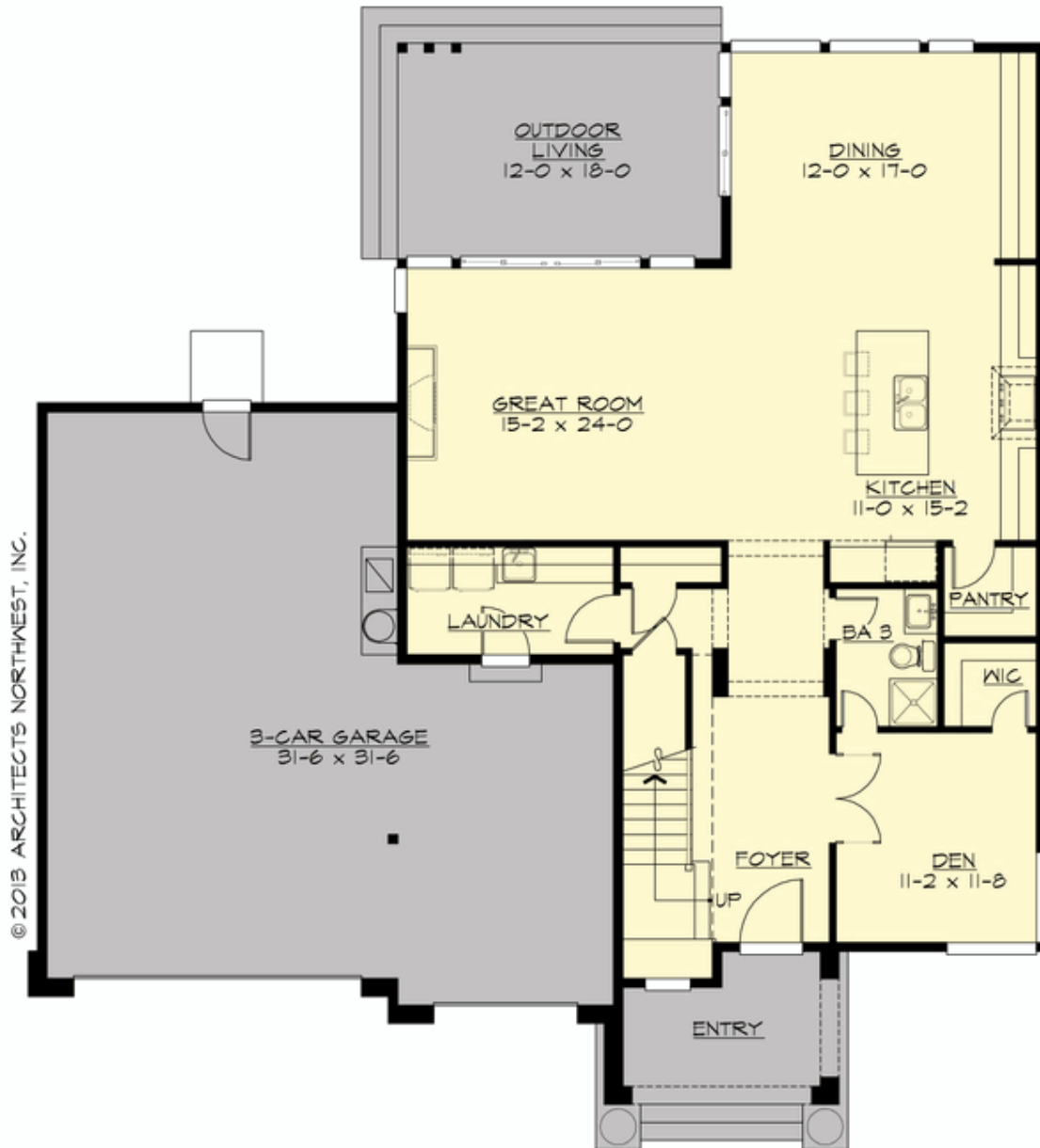
## SKYFAIRE - PLAN M2970A3F-0

Total Area: 2960 sq. ft.  
Garage Area: 900 sq. ft.  
Garage Area: 900 sq. ft.  
Garage Size: 3  
Stories: 2  
Bedrooms: 4  
Full Baths: 3  
Width: 56'-0"  
Depth: 59'-0"  
Height: 24'-0"  
Foundation: Crawl Space



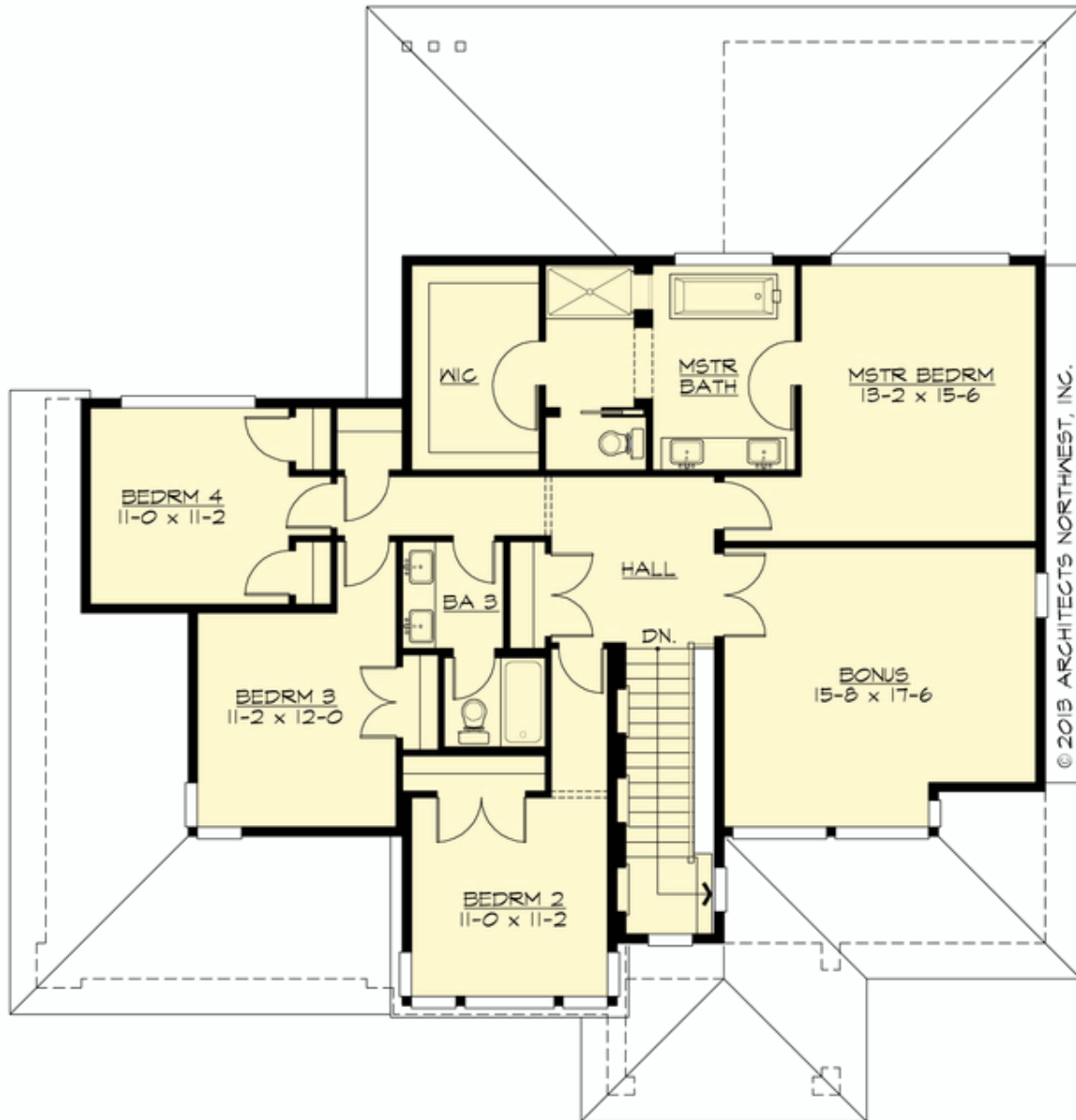
**SKYFAIRE - PLAN M2970A3F-0**

**MAIN FLOOR**



**SKYFAIRE - PLAN M2970A3F-0**

**UPPER FLOOR**



© 2013 ARCHITECTS NORTHWEST, INC.



## SKYFAIRE - PLAN M2970A3F-0

### PLAN DETAILS

#### Area Summary

Total Area:	2960 sq. ft.
Main Floor:	1383 sq. ft.
Upper Floor:	1577 sq. ft.
Garage Floor:	900 sq. ft.

#### General Information

Stories:	2
Width:	56'-0"
Depth:	59'-0"
Height:	24'-0"

#### Architectural Style

Contemporary  
Modern  
Prairie

#### Number of Rooms

Bedrooms:	4
Full Baths:	3

#### Garage

Garage Size:	3
Garage Door Location:	Front

#### Roof Pitches

Primary:	4:12
Secondary:	3:12

#### Wall Heights

Main:	9'-0"
Upper:	8'-0"
3rd Floor:	0'-0"
Lower:	0'-0"

#### Foundation Type

Crawl Space

#### Roof Framing

Trusses

#### Floor Load

Live (lbs):	40 PSF
Dead (lbs):	10 PSF

#### Roof Load

Live (lbs):	25 PSF
Dead (lbs):	15 PSF
Wind:	85 MPH

#### Design Features

- Bonus Space @ Upper Floor
- Den/Office
- Great Room
- Laundry Room @ Main Floor
- Master Bedroom @ Upper Floor  
Rear
- Rear Porch
- View Lot - Rear
- Wide Lot