

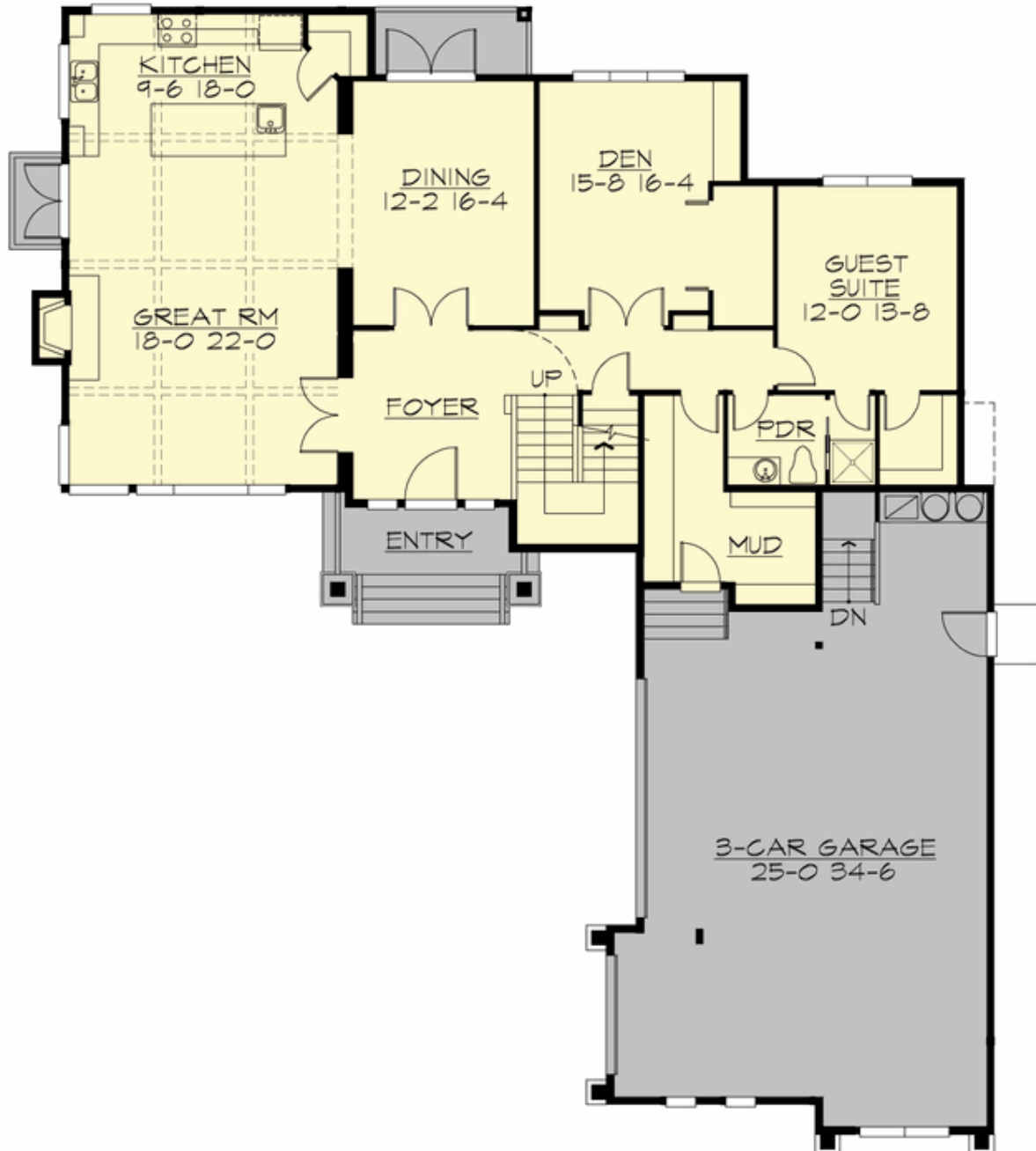
## HIGHLANDS - PLAN M3634A3S-0

Total Area: 3698 sq. ft.  
Garage Area: 942 sq. ft.  
Garage Area: 942 sq. ft.  
Garage Size: 3  
Stories: 2  
Bedrooms: 3  
Full Baths: 2  
Half Baths: 1  
Width: 64'-6"  
Depth: 76'-6"  
Height: 29'-6"  
Foundation: Crawl Space



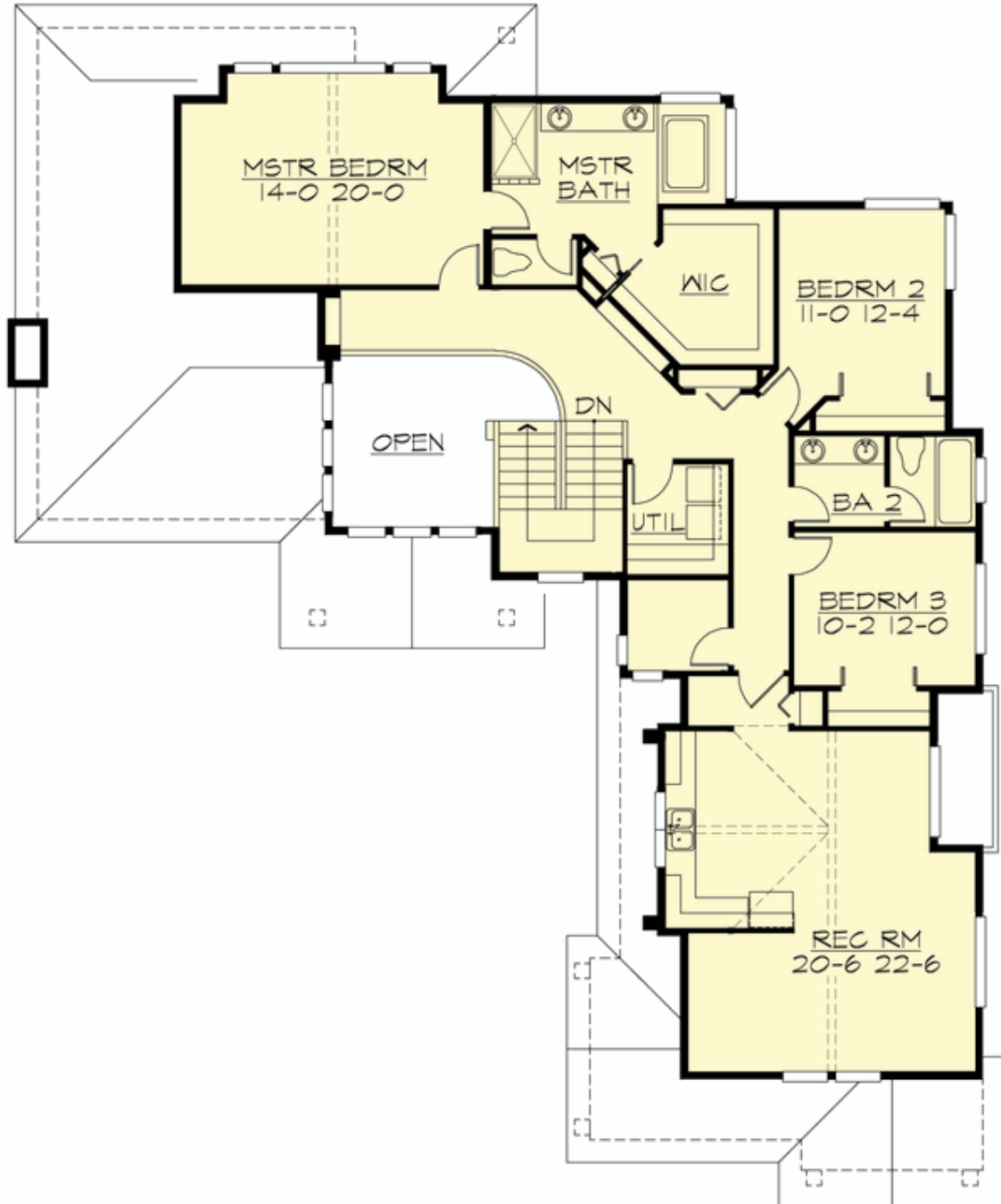
## HIGHLANDS - PLAN M3634A3S-0

### MAIN FLOOR



## HIGHLANDS - PLAN M3634A3S-0

### UPPER FLOOR





## HIGHLANDS - PLAN M3634A3S-0

### PLAN DETAILS

#### Area Summary

Total Area:	3698 sq. ft.
Main Floor:	1749 sq. ft.
Upper Floor:	1949 sq. ft.
Garage Floor:	942 sq. ft.

#### General Information

Stories:	2
Width:	64'-6"
Depth:	76'-6"
Height:	29'-6"

#### Architectural Style

Craftsman  
Lodge  
Shingle

#### Number of Rooms

Bedrooms:	3
Full Baths:	2
Half Baths:	1

#### Garage

Garage Size:	3
Garage Door Location:	Side

#### Roof Pitches

Primary:	10:12
Secondary:	4:12

#### Wall Heights

Main:	10'-0"
Upper:	9'-0"
3rd Floor:	0'-0"
Lower:	0'-0"

#### Foundation Type

Crawl Space

#### Roof Framing

Combination

#### Floor Load

Live (lbs):	40 PSF
Dead (lbs):	10 PSF

#### Roof Load

Live (lbs):	25 PSF
Dead (lbs):	15 PSF
Wind:	85 MPH

#### Design Features

- Bonus Space @ Upper Floor
- Den/Office
- Front and Rear Porch
- Laundry Room @ Main Floor
- Living & Family Room
- Master Bedroom @ Upper Floor Rear
- Wide Lot