

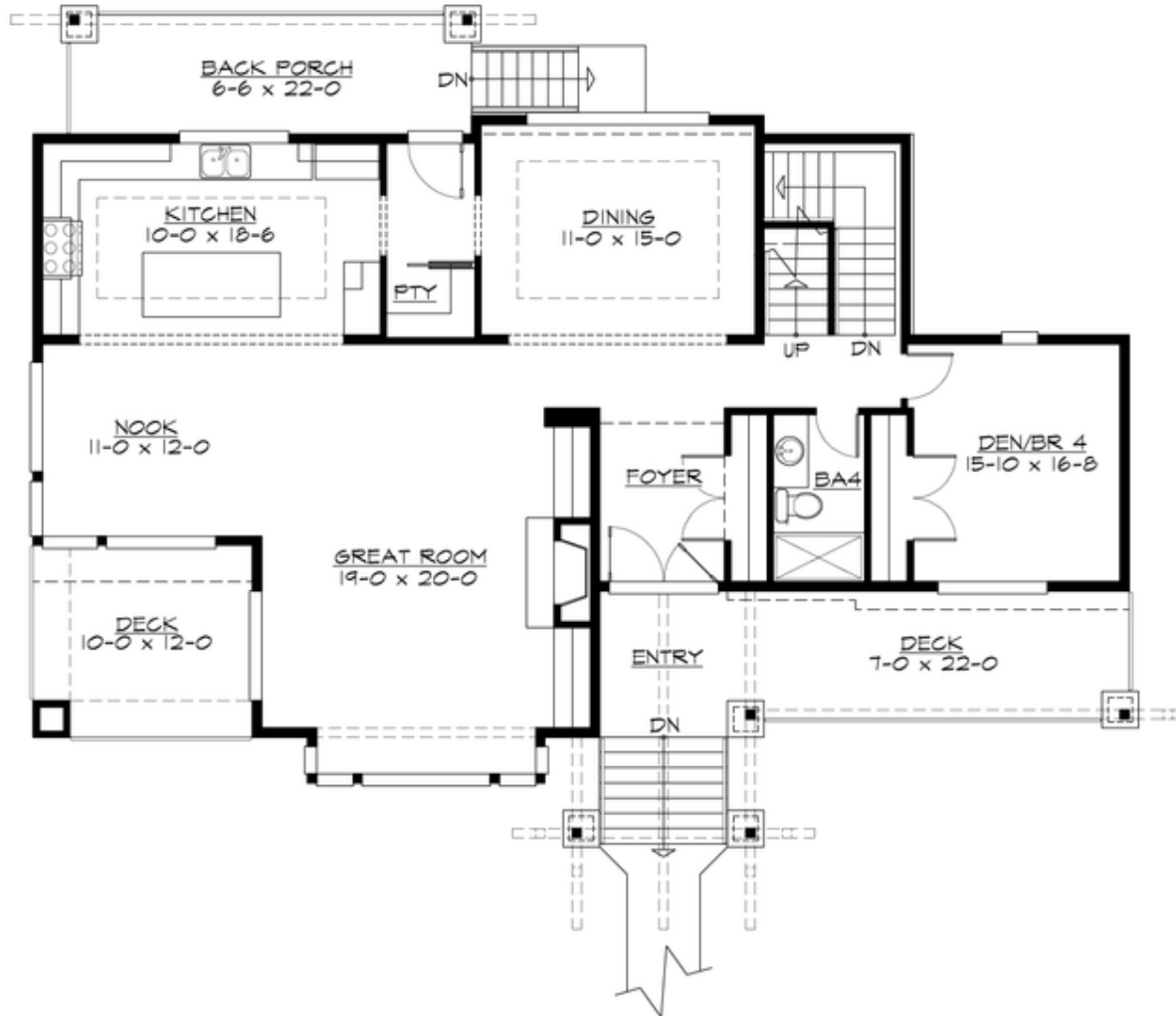
## **SALTAIRE - PLAN M4031A2FU-0FB**

Total Area: 4031 sq. ft.  
Garage Area: 500 sq. ft.  
Garage Area: 500 sq. ft.  
Garage Size: 2  
Stories: 3  
Bedrooms: 5  
Full Baths: 5  
Width: 60'-0"  
Depth: 46'-0"  
Height: 25'-0"  
Foundation: Daylight Basement



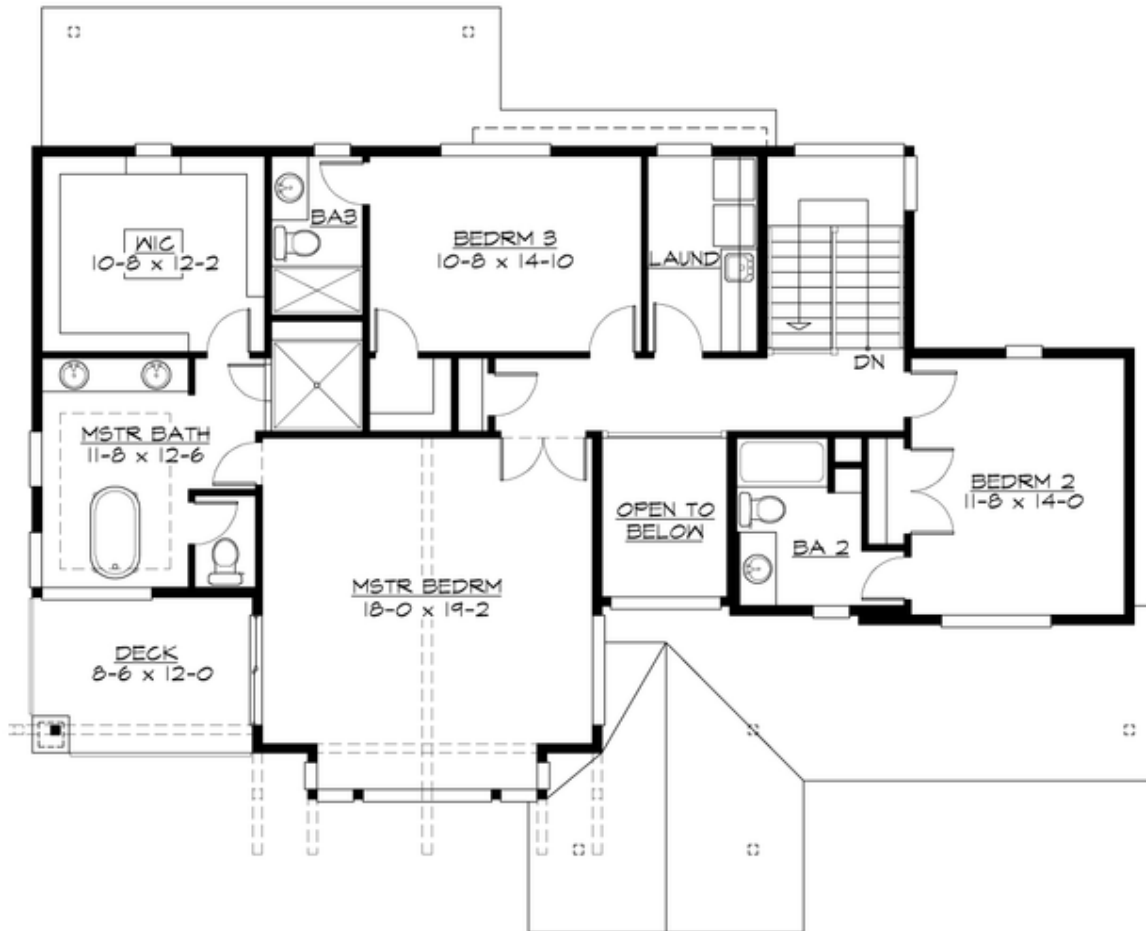
## SALTAIRE - PLAN M4031A2FU-0FB

### MAIN FLOOR



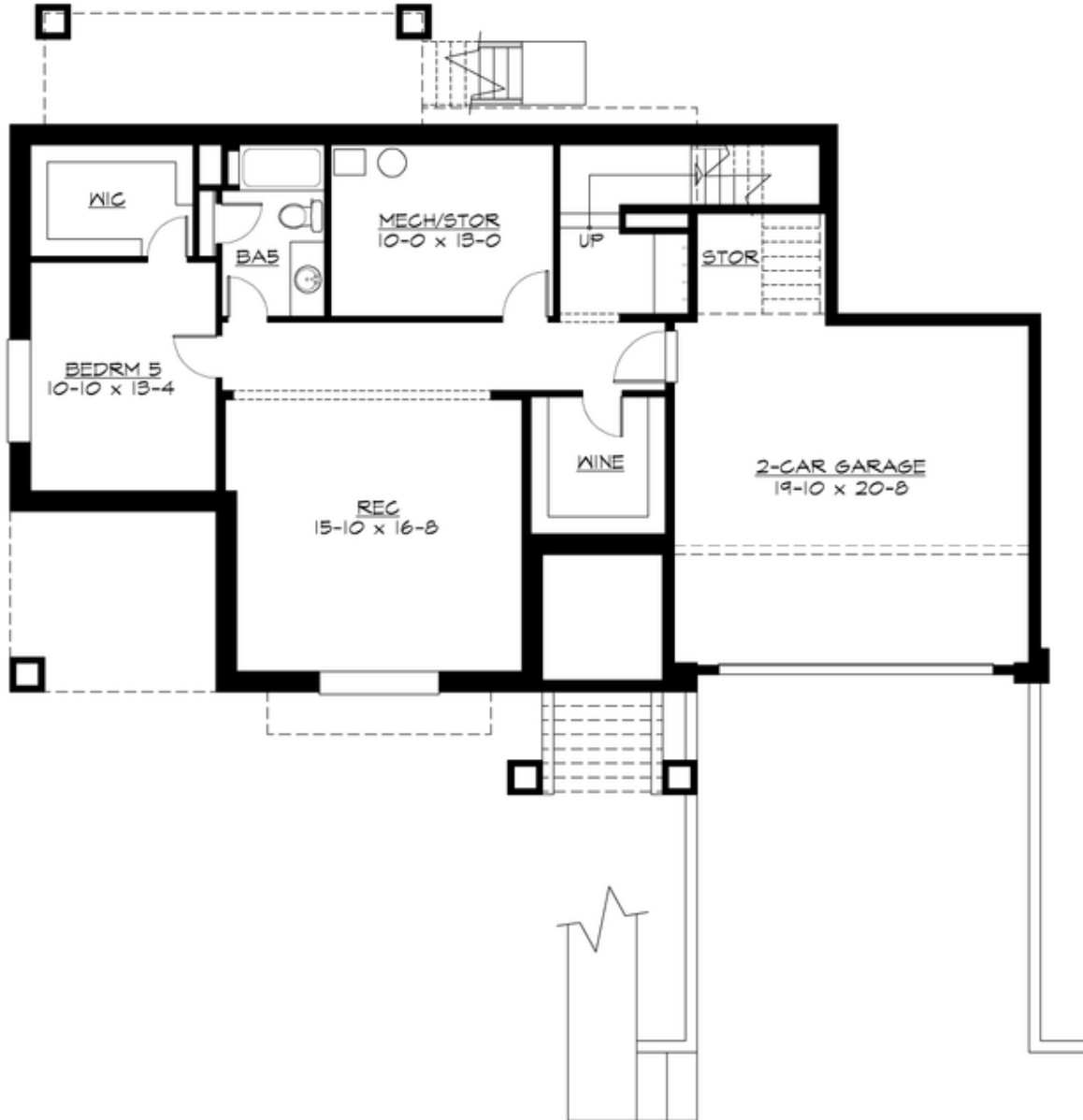
**SALTAIRE - PLAN M4031A2FU-0FB**

**UPPER FLOOR**



## SALTAIRE - PLAN M4031A2FU-0FB

### LOWER FLOOR



## SALTAIRE - PLAN M4031A2FU-0FB

### PLAN DETAILS

#### Area Summary

Total Area: 4031 sq. ft.  
Main Floor: 1460 sq. ft.  
Upper Floor: 1425 sq. ft.  
Lower Floor: 1146 sq. ft.  
Garage Floor: 500 sq. ft.

#### General Information

Stories: 3  
Width: 60'-0"  
Depth: 46'-0"  
Height: 25'-0"

#### Architectural Style

Contemporary  
Craftsman  
Northwest

#### Number of Rooms

Bedrooms: 5  
Full Baths: 5

#### Garage

Garage Size: 2  
Garage Door Location: Front  
Garage Type: Under

#### Roof Pitches

Primary: 4:12  
Secondary: 3:12

#### Wall Heights

Main: 10'-0"  
Upper: 9'-0"  
3rd Floor: 0'-0"  
Lower: 9'-0"

#### Foundation Type

Daylight Basement

#### Roof Framing

Combination

#### Floor Load

Live (lbs): 40 PSF  
Dead (lbs): 10 PSF

#### Roof Load

Live (lbs): 25 PSF  
Dead (lbs): 15 PSF  
Wind: 85 MPH

#### Design Features

- Bonus Space @ Lower Floor
- Front and Rear Porch
- Great Room
- Laundry Room @ Upper Floor
- Master Bedroom @ Upper Floor Front
- Wide Lot